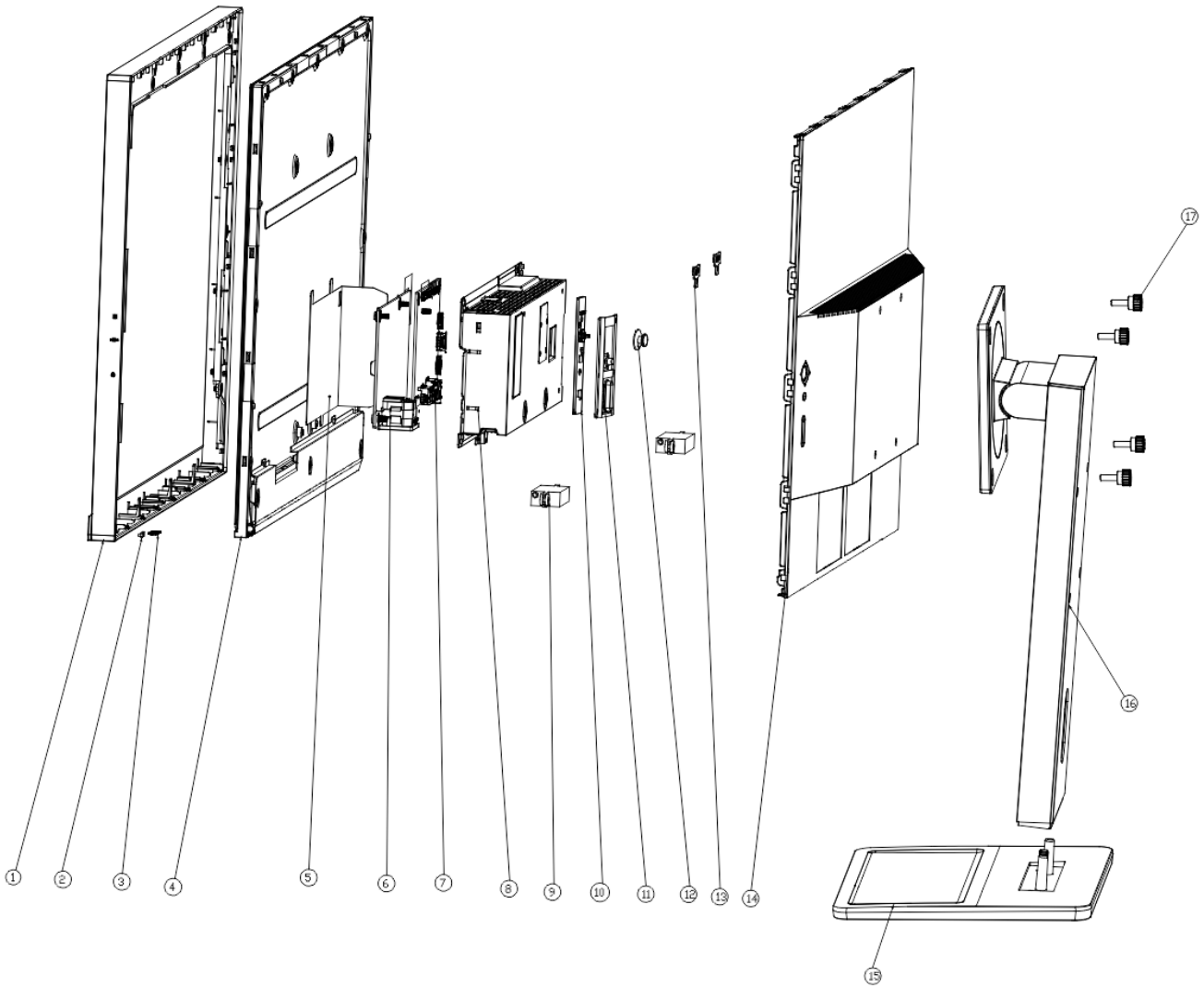


# E24q-30&TS24q-30 Simplified service manual for dismantling

Model Name: ThinkVision E24q-30&TS24q-30

# Exploded Diagram



ITEM	PART NO.	PART NAME	Q'ty	Remark
1	742.01005.0001	MID Cover	1	
2	742.01004.0001	Lens	1	
3	XXX	Lens BD	1	
4	XXX	Panel	1	
5	740.01005.0001	Power Mylar	1	
6	740.01003.0001	POWER BD	1	
7	XXX	IF BD	1	
8	740.01004.0001	Chassis Assy	1	
9	XXX	Speaker	2	
10	XXX	Function key BD	1	
11	742.01005.0001	Function key	1	
12	742.01005.0001	Joystic key	1	
13	753.07504.0001	Metal	2	
14	740.01003.0001	Rear Cover	1	
15	780.01006.0001	Base ASSY	1	
16	740.01005.0001	Stand ASSY	1	
17	780.07504.0001	Stand Screw ASSY	1	

## 1. Precaution

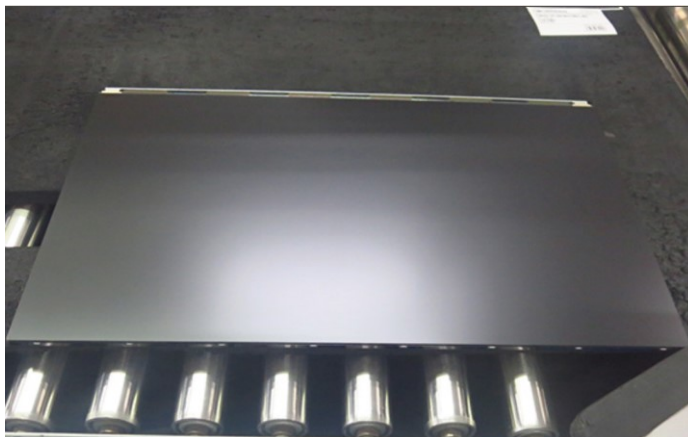
Please read the precaution as follows to prevent any damages to the LCD Monitor.

Make sure all power connector is removed. Be sure that the LCD Monitor is in power off status.

Prepare soft cloth and sponge as working platform to place LCD monitor horizontally.






Hold LCD by the side carefully and DON'T touch or press panel directly.



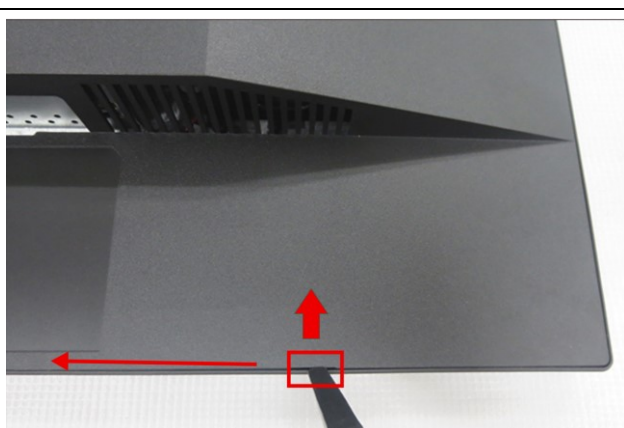
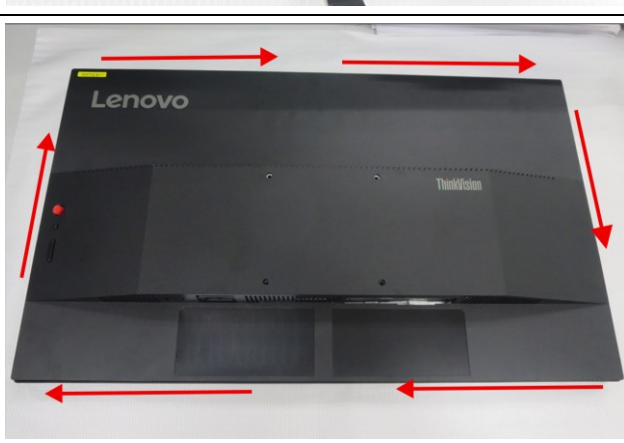


## 2. Appropriate tools

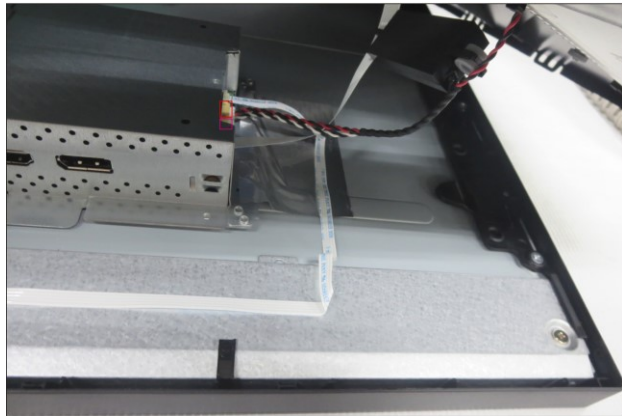
Select the Appropriate tools for disassembly and re-assembly.

Phillips screwdriver (#2)	
Phillips screwdriver (#1)	
Gloves or soft cloth	

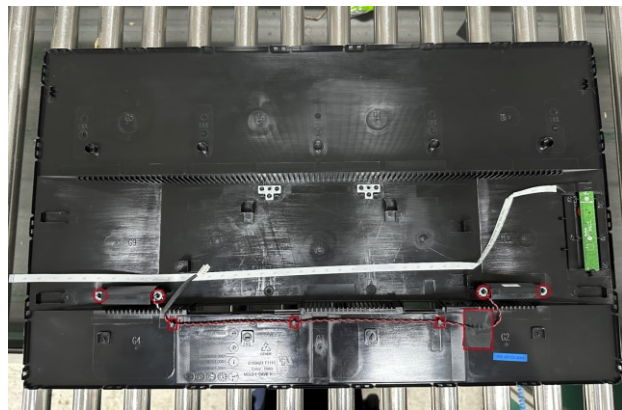
### 3. Disassembly SOP

<p>Put the monitor on a flat surface (Put the EPE on under the monitor)</p>	
<p>Remove 4pcs screws for remove the stand base Tool : Screwdriver #2</p>	
<p>Use the C/D disassembly tool to release rear cover hook from disassemble hole on bottom</p>	
<p>Remove t Wedge your fingers between the rear cover and the middle frame on the corners of the top side of the monitor to unlock the rear cover Tool: Gloves he rear cover</p>	

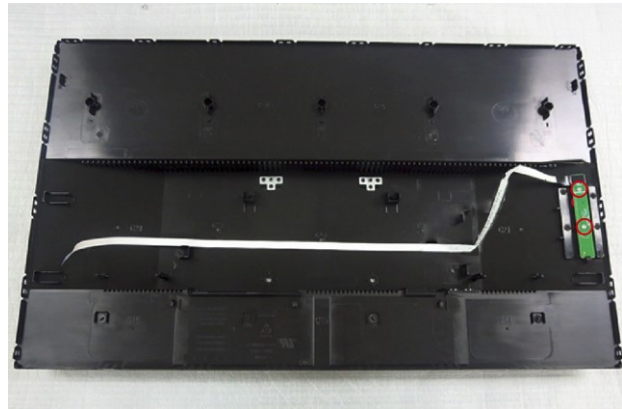
Lift the rear cover up, then disconnect the function key cable and speaker cable, and then remove the rear cover



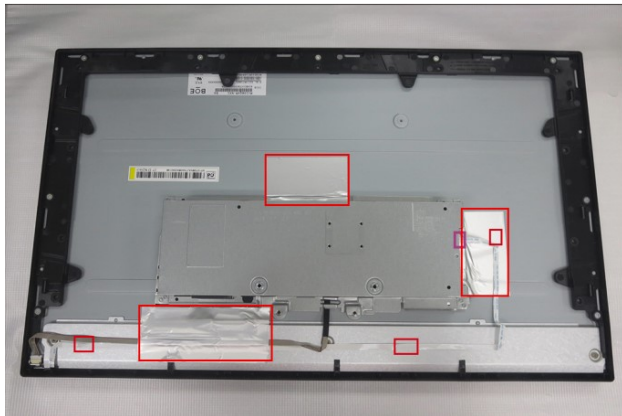
Release the two speakers from the probers. Remove 1pcs tape and release the speaker's cable from the hooks of the rear cover



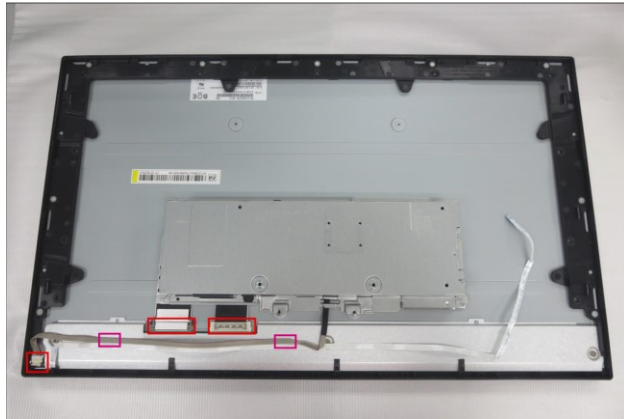
Tear off all tape, and release the key board by removing 2pcs screws  
Tool: Screwdriver #1



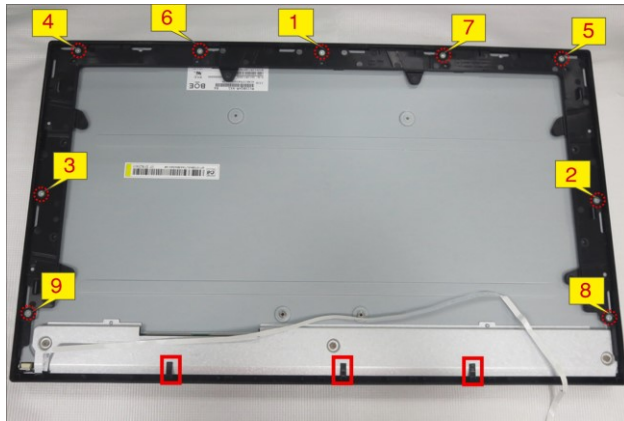
Disconnect the LED cable, then tear off 3pcs aluminum foil



Disconnect the LVDS cable and panel lamp cable. Lift up the bracket and put it aside



Remove all screws for unlocking middle bezel.  
Tool: Screwdriver #2



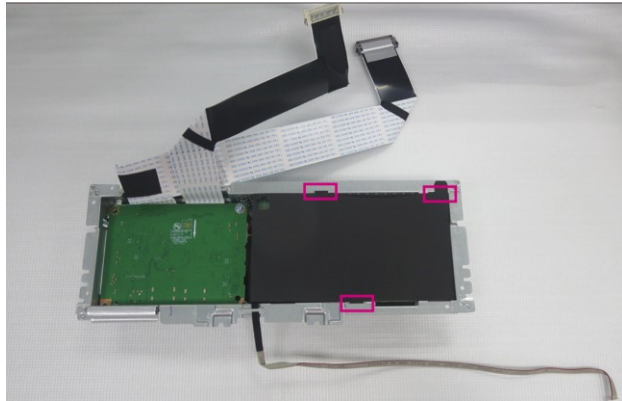
Disassemble the middle bezel with the panel module



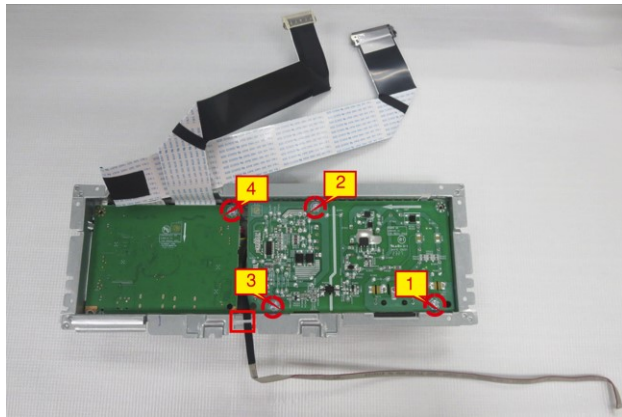
Release the keypad PCB from the middle frame



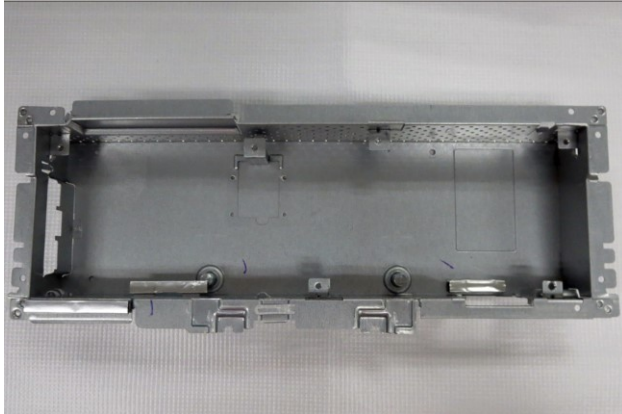
Remove the Mylar tape



Remove 4pcs screws for unlocking all PCB boards.  
Release the lamp cable from hook of bracket.  
Tool: Screwdriver #2



Take out PCB and peel off all mylar.



Take out the thermal pads from power PCB

