

SilverNet STREAM 60GHz Range

SIL STREAM 605
SIL STREAM 60M
SIL STREAM 60L



SIL STREAM 605
57-71GHz, 2.5Gbps
Point to Point up to 500m

SIL STREAM 60M
57-71GHz, 2.5Gbps
Point to Multipoint

SIL STREAM 60L
57-71GHz, 2.5Gbps
Point to Point up to 2Km

60GHz V-Band High-capacity Wireless Bridge

OVERVIEW

The SilverNet STREAM 60GHz range is the perfect solution for high-speed data links across congested urban environments, where 5GHz band areas may have become difficult to use. With throughput speeds of up to 2.5Gbps Full Duplex, STREAM is ideal for gigabit connections across last-mile access routes in RF congested areas.

The STREAM radios are fully integrated into our NMS SilverView, so users can monitor link quality, throughput plus more from one simple to use FREE application.

There are three models in the SilverNet STREAM series, which operate in the mmWave band. These models share a similar form factor and the same mounting design but differ in their antennas which operate in the noise-free 60GHz spectrum.

The SIL STREAM **605** is capable of links up to 500M and alignment is simplified with its 40° x 40° beamwidth antenna.

The SIL STREAM **60M** can connect to 25 clients connected within its 120° x 50° antenna beamwidth. For Multipoint applications, the STREAM 605 or 60L can function as a client to the STREAM 60M.

The SIL STREAM **60L** is capable of links up to 2KM, with its 5° x 5° beamwidth antenna, alignment is simplified with the built in aiming sight.

The STREAM series of radios all come with 256+ AES and 6 or 12 (half size) transmission channels.

Features

- Up to 2.5Gbps Full Duplex Aggregate Throughput
- Multipoint connectivity for up to 25 clients
- 6 Channels or 12 Channels supported in the 57-71 GHz Band
- Up to 16QAM Modulation
- Over-The-Air (OTA) Security, AES+ 256 Encryption
- High Gain Antennae with Beamforming Technology
- IP67 Rated
- High power 40 EIRP (60L 55EIRP)
- Built in Link Data test
- Supports QoS with 4 Service Classes
- Supports Layer 2 Forwarding including:
 - VLAN Transparent Transmission
 - Management VLAN
- 2 Year Warranty as Standard

Copyright © SilverNet Limited. All rights reserved. All other company and product names may be trademarks of their respective companies. Whilst every effort is made to make sure the information shown is accurate, SilverNet Limited can not accept liability for any errors that may arise. No freedom to use information, patents, trademarks or other intellectual property rights is implied by the publication of this document. E&OE. SilverNet Limited reserve the right to change specifications and other information within this document without notice and your attention is brought to the fact that performance figures are under ideal conditions. Actual performance will depend on many environmental factors, and it is recommended that a site survey is undertaken prior to installation. Please also note that this equipment may also be subject to local legislative restrictions. It is the end user's responsibility to ensure that the installation complies with any such restrictions that are in force.



Distributed By:

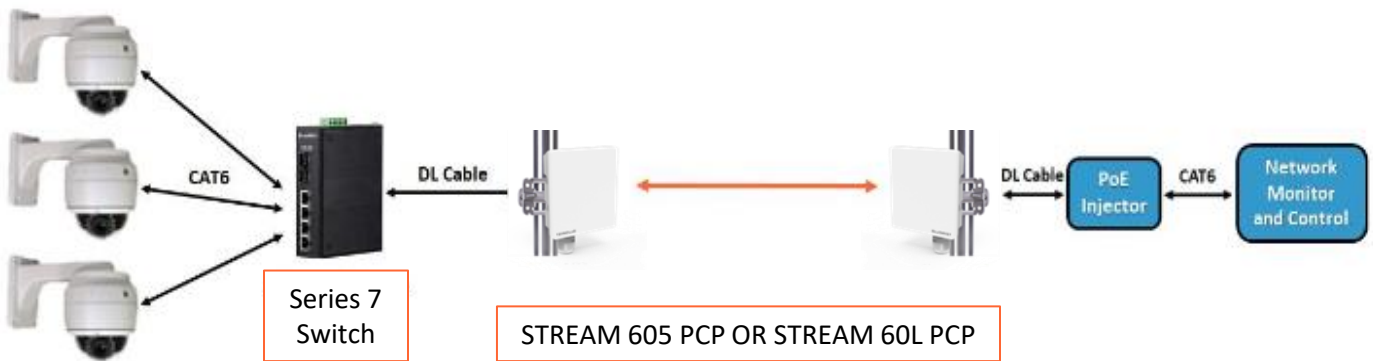
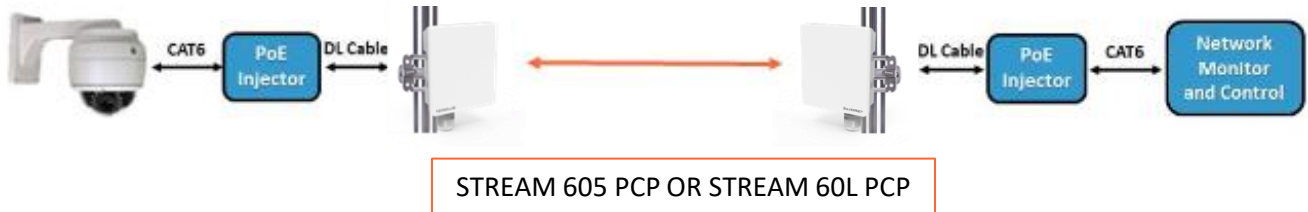
Technical Specifications

Part No.	SIL STREAM 605 PCP (up to 500m Paired Link)	SIL STREAM 60M (up to Multipoint BASE)	SIL STREAM 60L PCP (up to 2Km Paired Link)
Radio			
Antenna	Integrated Phased Array Antenna with 64 Antenna Elements		
Radiation Pattern	+/- 15° azimuth (40° total) and +/- 15° elevation (40° total). Beam size is: 12° azimuth x 12° elevation. Vertical Polarization	+/- 60° azimuth (120° total) and +/- 25° elevation (50° total). Beam size is: 23° azimuth x 12° elevation. Vertical Polarization.	+/- 5° azimuth (5° total) and +/- 5° elevation (5° total). Beam size is: 5° azimuth x 5° elevation. Vertical Polarization
Antenna Gain	22 dBi	20 dBi	32 dBi
RF Output Power	40 EIRP		55 EIRP
Bandwidth	2.5Gbps (6 x 2160MHz) 1Gbps (12 x 1080MHz)		
Frequency	57 – 71 GHz		
Modulation	BPSK, QPSK, 16QAM		
Channels	1 (58320 MHz), 2 (60480 MHz), 3 (62640 MHz), 4 (64800 MHz), 5 (66640 MHz), 6 (68800 MHz)		
Throughput	Up to 2.5Gbps TDD		
Physical			
Dimensions	12.5 x 11 x 4.4 cm		12.5 x 11 x 12cm
Radio Weight	600g		800g
Interface	1x 2.5 Gigabit Ethernet (PoE IN) 1x 60GHz Radio		
Environmental Conditions (Operation / Storage)	Operating Temperature: -20°C to 60°C Storage Temperature: -20°C to 70°C Operating Humidity: 5% to 95% non-condensing		
Wind Load	210 km/h		
IP Rating	IP67 Rated		
Mounting	Wall / Pole Mountable (SIL MNT3 Kit Included)		
Pack Contents	2x Radios, 2 x POE injectors, 2 x Mounting bracket sets	1x Radio, 1 x POE injector, 1 x Mounting bracket set	2x Radios, 2 x POE injectors, 2 x Mounting bracket sets
Software			
Managment	Web Gui		
Networking Mode	Transparent Bridge, IPv4/IPv6 Supported		
Max MTU	7800		
Security	Supports Over-The-Air (OTA), AES+ 256 Encryption		
VLAN	Supports Management VLAN, Q-in-Q Transparent Passthrough, Layer 2 Forwarding with Native Bridge		
SNMP	MIB, SNMP V2 & V3		
LED	LED Indicators for LAN, Link & Power		
NMS	NMS Management Supported (SilverView included)		
Power			
Supply	48v ~ 55v 802.3af/at Compliant Gigabit PoE (SIL 48G POE+ Included)		
Consumption	15.9W Max.		
Standards			
Certifications	FCC / IC / CE / VCCI / TELEC / RCM		
Other			
Warranty	2 Years (extendable to 5 Years)		

Note: To purchase a single radio kit just remove 'PCP' from the part code

Network Schematics

Point to Point



Point to Multipoint

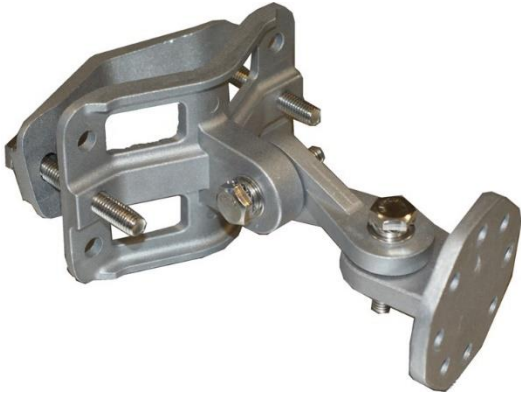


SIL STREAM 605 OR 60L
Up to 25 clients

SIL STREAM 60M



Included Accessories Specifications



SIL MNT3
3 Axis Mounting bracket

OVERVIEW

The SIL MNT3 bracket has a 3 Axis Tilt and Swivel mechanism that enables precise alignment of the SIL STREAM 60, while the notches engraved on the metal allows the bracket to hold firm when you reach the best signal.

It can be fitted to either a wall, a 3" (75mm) pole or paired with banding strap to fit to larger columns.

Specifications

Part No.	SIL MNT3
Physical	
Dimensions	150* x 111 x 75 mm (L x W x H)
Weight	415 g
Wind Load	100 mph
Axis Rotation	Vertical: +/- 45° Horizontal: +/- 90°
Mounting	Wall or Pole mount up to 75 mm



SIL 48G POE+
Single Port PoE Injector

OVERVIEW

The SIL 48G PoE+ is a Single Port Gigabit PoE injector which can carry power to devices such as: IP Cameras, Wireless Access Points, VoIP Phones and much more. Providing an alternative to upgrading existing switches to PoE enabled devices.

With quick and easy plug and play, you can rapidly enable PoE devices on your network.

Specifications

Part No.	SIL 48G POE+
Physical	
Dimensions	Dimensions:62mm(W) x 38.5mm(H) x 165mm(L)
Weight	185 g
Operating temperature	(0°C ~+40°C)
Output	802.3af/at up to 30w
Input Voltage	110~240VAC
Mounting	Can be screwed to a wall or board