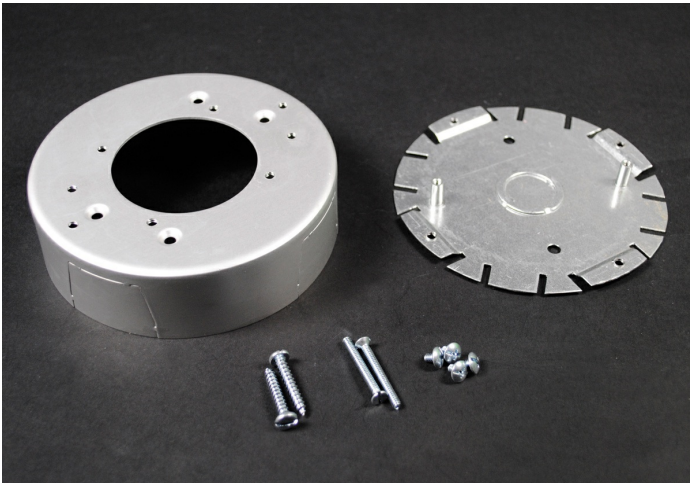




Wiremold  
AL2000 Round Fixture Box (Solid Base)  
Part No. AL2038



Designed for use in hanging fixtures. Cover takes any device with mounting screw centers of 2 3/4", 3 1/2" and 4 1/16" (70mm, 89mm, 103mm). Base has concentric 1/2" and 3/4" trade size Kos.

## Features & Benefits

Designed for use in hanging fixtures. Cover takes any device with mounting screw centers of 2 3/4", 3 1/2" and 4 1/16" (70mm, 89mm, 103mm). Base has concentric 1/2" and 3/4" trade size Kos.

## Specifications

### General Info

Product Line	Wiremold	UPC Number	786776038965
Country Of Origin	United States	Application Sector	Commercial

Standard	cULus Listed Raceway: File E4376 Guide RJPR. Fittings: File E41751 Guide RJPR. Raceway & Fittings: Meet Article 386 of NEC. Multioutlet Assemblies: Meet Article 380 of NEC. cULus Listed Raceway: File E4376 Guide RJBT. Multioutlet Assemblies: File E15191 Guide PVGT. Fittings: File E41751 Guide RJPR. Base & Blank Cover: Meets Article 386 of NEC. Plugmold Strips: Meets Article 380 of NEC.	Type	Plugmold
----------	--	------	----------

### Listing Agencies / 3rd Party Agencies

cULus ListingNumber	E41751	cULus Listed	Yes
---------------------	--------	--------------	-----

### Buy American Act Compliance

NAFTA	Yes
-------	-----

---

## Additional Information

---

RoHS Conformant	Yes	Product Environmental Profile	Yes
-----------------	-----	-------------------------------	-----

---

## Technical Information

---

Amperage	15 A	Enclosure Type	Aluminum
----------	------	----------------	----------

---

Voltage	120.0 V	Environmental Conditions	Dry interior locations
---------	---------	--------------------------	------------------------

---