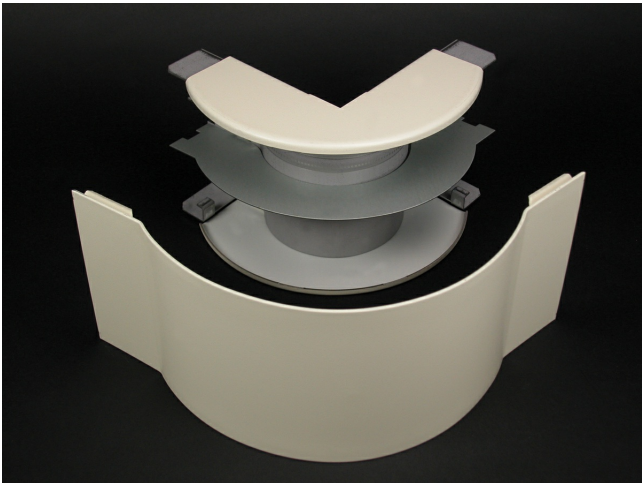




Wiremold
4000 Radiused Full Capacity External Elbow Fitting
Part No. G4018FO



Full capacity 90 degree external corner. Used in both divided and undivided applications. Provides 2" (51mm) cable bend radius control for UTP, STP and fiber optic installations. Ideal for new installations whether the cable is lay-in or pull-through.

Features & Benefits

Full capacity 90 degree external corner. Used in both divided and undivided applications. Provides 2" (51mm) cable bend radius control for UTP, STP and fiber optic installations. Ideal for new installations whether the cable is lay-in or pull-through.

Specifications

General Info

Product Line	Wiremold	UPC Number	786776537017
Country Of Origin	United States	Application Sector	Residential/Commercial
Standard	cULus Listed Raceway: File E4376 Guide RJBT. Fittings: File E41751 Guide RJPR. Base & Blank Cover: Meets Article 386 of NEC. Meets Section 12-600 of CEC.	Type	Raceway

Listing Agencies / 3rd Party Agencies

cULus ListingNumber	E41751	cULus Listed	Yes
---------------------	--------	--------------	-----

Buy American Act Compliance

NAFTA	Yes
-------	-----

Additional Information

RoHS Conformant	Yes	Product Environmental Profile	Yes
-----------------	-----	-------------------------------	-----

Technical Information

Voltage	600.0 V
---------	---------
