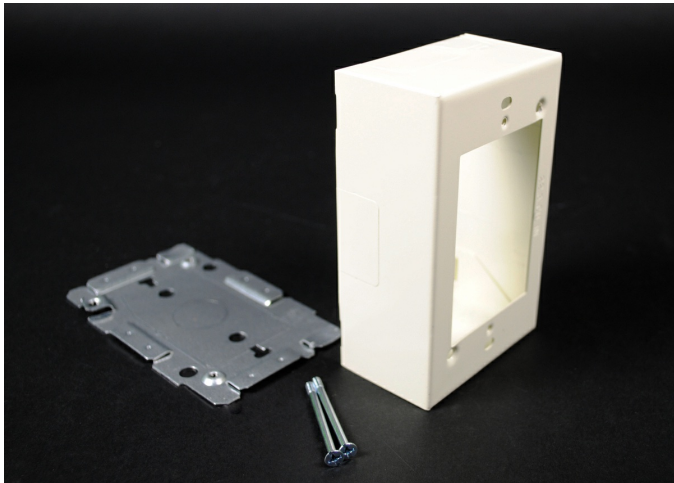




Wiremold  
2000 Single-Gang Device Box Fitting  
Part No. S2048



Single Gang Device Box. Cover has twistouts for 2000, 500 and 700 Series Raceways. Base has 1/2" trade size KO and rectangular KO for extension to wall box. Base has #10 threaded hole for ground connection.

## Features & Benefits

Single Gang Device Box. Cover has twistouts for 2000, 500 and 700 Series Raceways. Base has 1/2" trade size KO and rectangular KO for extension to wall box. Base has #10 threaded hole for ground connection.

## Specifications

### General Info

Product Line	Wiremold	UPC Number	786776084832
Country Of Origin	United States	Application Sector	Commercial
Standard	cULus Listed Base & Blank Cover: File E4376 Guide RJBT. Multioutlet Assemblies: File E15191 Guide PVGT. Fittings: File E41751 Guide RJPR. Base & Blank Cover& Plugmold Series w/Snapcoil Harness: Meets Article 386 of NEC. Meets Section 12-3032 of CEC. Plugmold Wired Sections: Meets Article 380 of NEC. Meets Section 12-3032 of CEC.		Type Plugmold

### Dimensions

Product Width US	2.875 in	Product Depth US	1.75 in
Product Length US	2.875 in		

### Buy American Act Compliance

NAFTA	Yes
-------	-----

---

Additional Information

---

RoHS Conformant	Yes	Product Environmental Profile	Yes
-----------------	-----	-------------------------------	-----

---

Technical Information

---

Amperage	15 A	Enclosure Type	Stainless Steel
----------	------	----------------	-----------------

---

Voltage	125.0 V	Environmental Conditions	Dry interior locations
---------	---------	--------------------------	------------------------

---