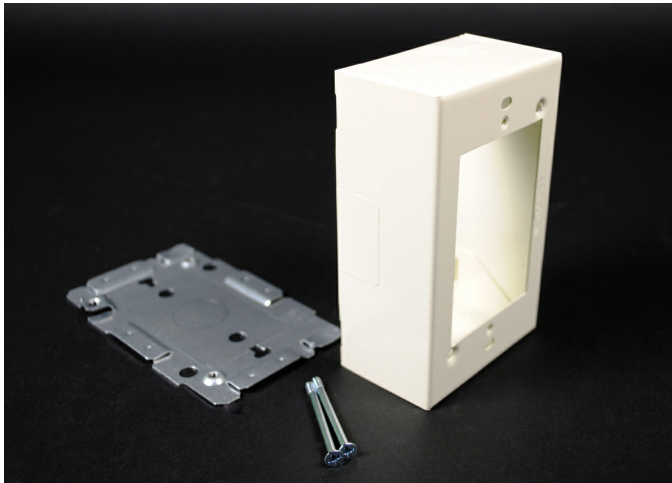




Wiremold
2000 Single-Gang Device Box Fitting
Part No. BK2048



Single Gang Device Box. Cover has twistouts for 2000, 500 and 700 Series Raceways. Base has 1/2" trade size KO and rectangular KO for extension to wall box. Base has #10 threaded hole for ground connection.

Features & Benefits

Single Gang Device Box. Cover has twistouts for 2000, 500 and 700 Series Raceways. Base has 1/2" trade size KO and rectangular KO for extension to wall box. Base has #10 threaded hole for ground connection.

Specifications

General Info

Product Line	Wiremold	UPC Number	786776074550
Country Of Origin	United States	Application Sector	Commercial
Standard	cULus Listed Base & Blank Cover: File E4376 Guide RJBT. Multioutlet Assemblies: File E15191 Guide PVGT. Fittings: File E41751 Guide RJPR. Base & Blank Cover& Plugmold Series w/Snapcoil Harness: Meets Article 386 of NEC. Meets Section 12-3032 of CEC. Plugmold Wired Sections: Meets Article 380 of NEC. Meets Section 12-3032 of CEC.	Type	Plugmold

Dimensions

Product Width US	2.875 in	Product Depth US	1.75 in
Product Length US	2.875 in		

Buy American Act Compliance

NAFTA	Yes
-------	-----

Additional Information

RoHS Conformant	Yes	Product Environmental Profile	Yes
-----------------	-----	-------------------------------	-----

Technical Information

Amperage	15 A	Enclosure Type	Steel
----------	------	----------------	-------

Voltage	125.0 V	Environmental Conditions	Dry interior locations
---------	---------	--------------------------	------------------------
