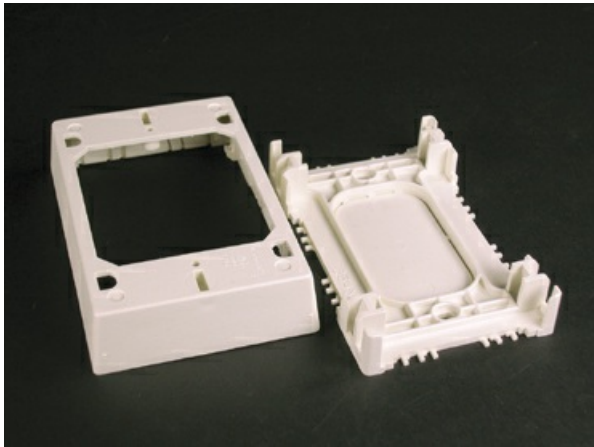




Wiremold  
400/800/2300/2300D Shallow Device/Extension Box Fitting  
Part No. 2348S/51



For shallow switches and receptacles. Base has rectangular KO.

## Features & Benefits

For shallow switches and receptacles. Base has rectangular KO.

## Specifications

### General Info

Product Line	Wiremold	UPC Number	786776050424
Country Of Origin	United States	Application Sector	Residential/Commercial

Standard	cULus Listed Raceway: File E90378 Guide RJTX. Complies with flammability requirements of UL-5A. Fittings: File E90377 Guide RJYT. Meets Article 388 of NEC. UL Listed for up to 600V. Meets Section 12-2600 of CEC.	Type	Raceway
----------	---	------	---------

### Dimensions

Product Width US	3.0 in	Product Depth US	1.0 in
Product Length US	4.75 in		

### Listing Agencies / 3rd Party Agencies

cULus ListingNumber	E90377	cULus Listed	Yes
---------------------	--------	--------------	-----

### Buy American Act Compliance

---

NAFTA	Yes
-------	-----

---

### Additional Information

---

RoHS Conformant	Yes	Product Environmental Profile	Yes
-----------------	-----	-------------------------------	-----

---

### Technical Information

---

Voltage	600 V
---------	-------

---