

Floor-Mounted Installation

For the operation video, please refer to [Floor-Mounted](#).

Package Contents



Floor Stand



Floor stand beam

*65-inch and 86-inch floor stand beam are different in size and cannot be mixed.



Screw X 4
(M6 × 12 mm)

* For mounting floor stand beam



Screw X 6
(M6 × 20 mm)

* For locking floor stand and endpoint



4mm Hex key



Rubber cap X 2



PC Patch X 2



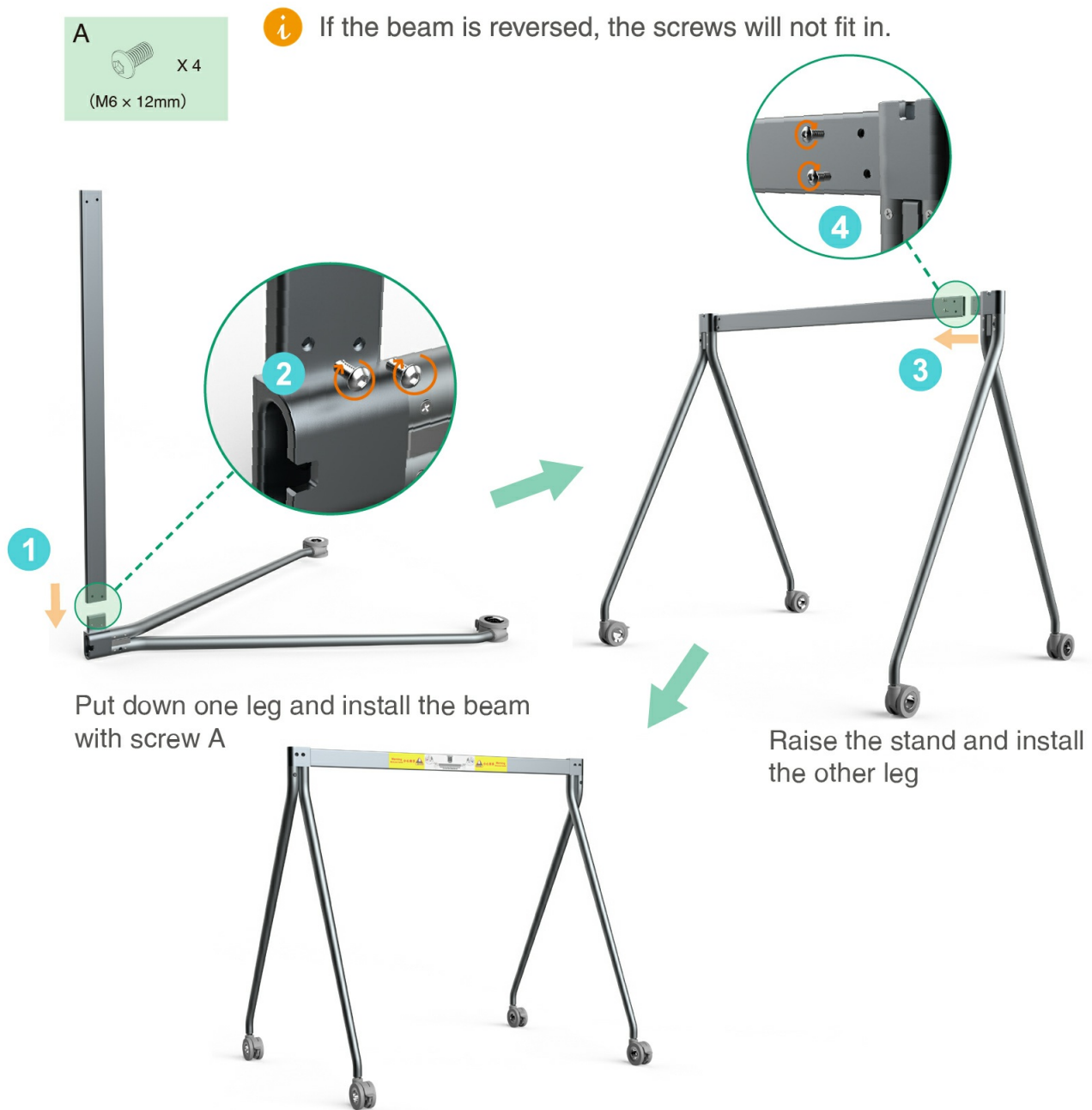
Quick Start Guide
(Floor-Mounted)

Endpoint Installation

1. Lock the scroll wheels

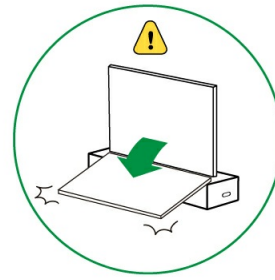


2. Put down the floor stand and install the floor stand beam on the floor stand

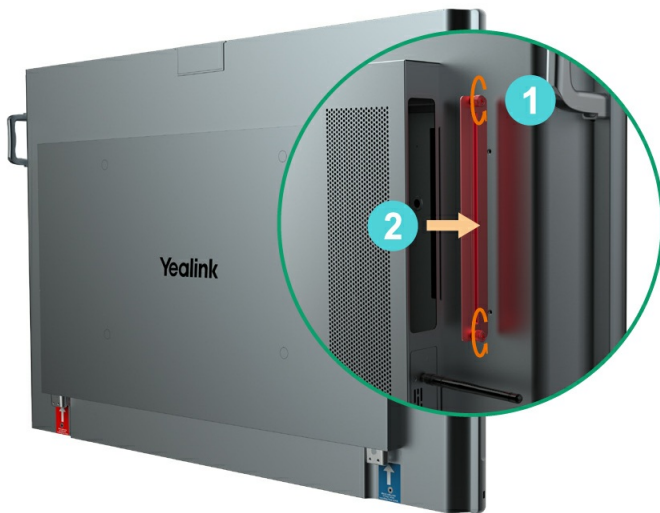


3. Install Windows OPS (Optional)

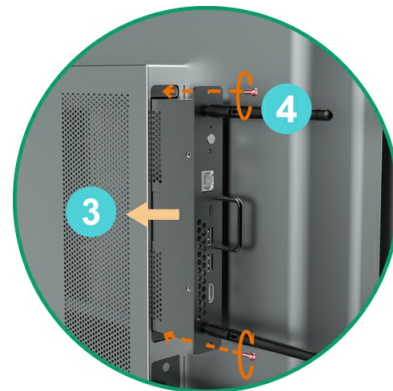
- i** 1. The endpoint has a built-in Android OS and supports installing OPS modules to use both Windows and Android OS.
2. Windows OPS is optional. If you have not purchased, skip this step.
3. When installing or uninstalling OPS, make sure that the endpoint is powered off. Otherwise, OPS may be abnormal.



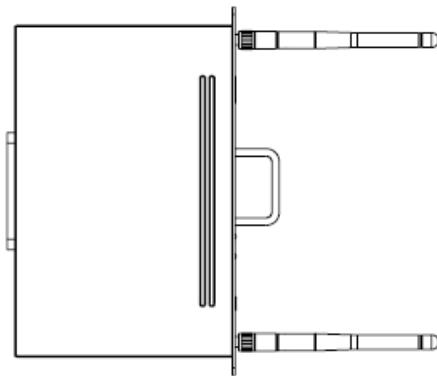
Remove the OPS cover




Insert the OPS and tighten the screws



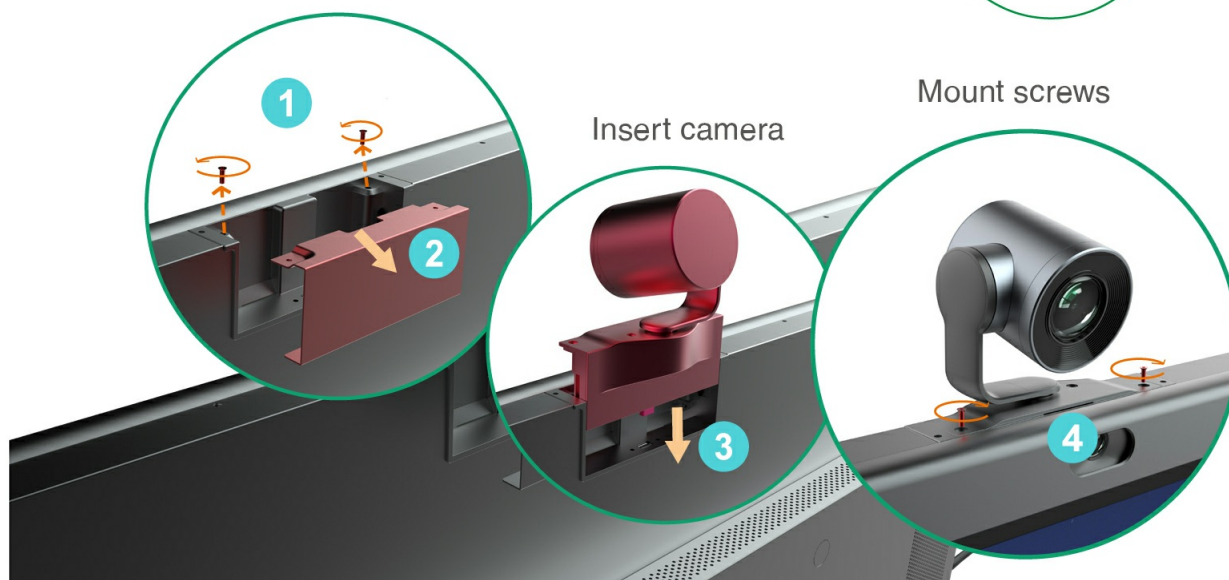
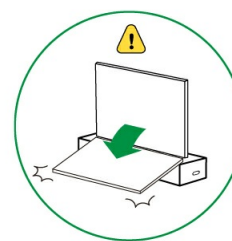
We recommend placing the OPS antenna as follows (this can maximize the signal strength):



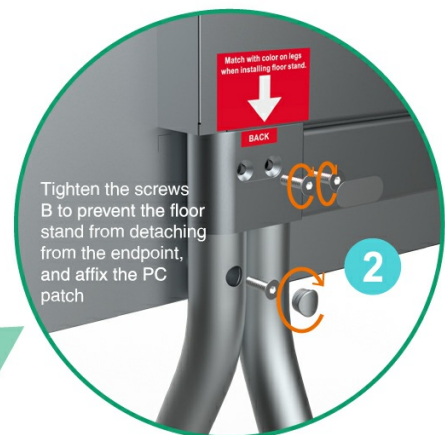
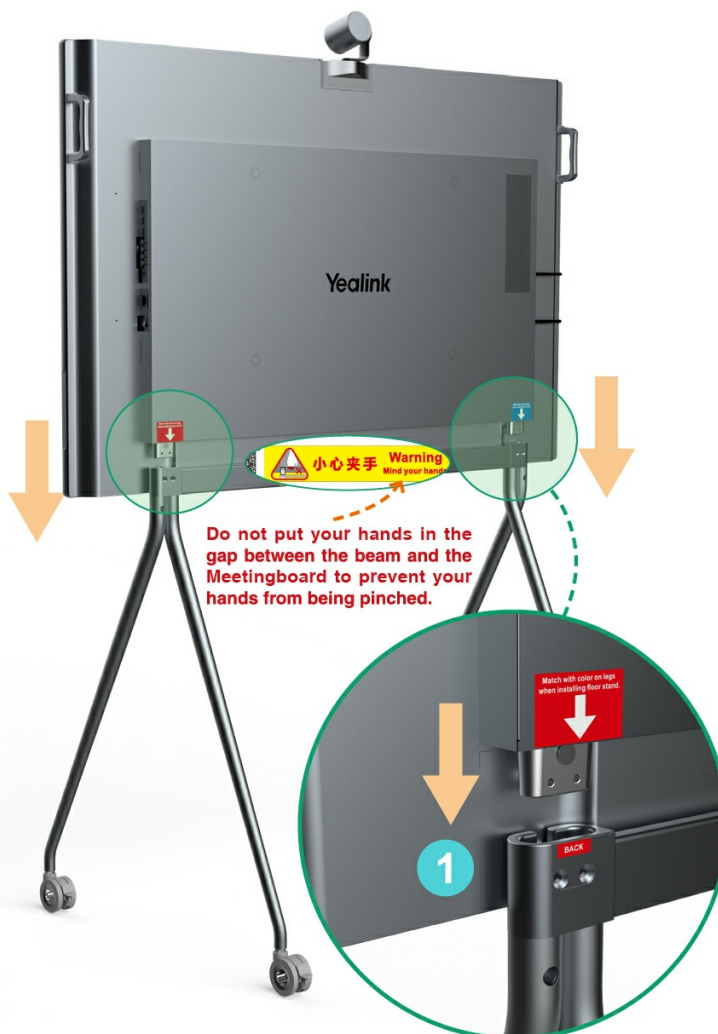
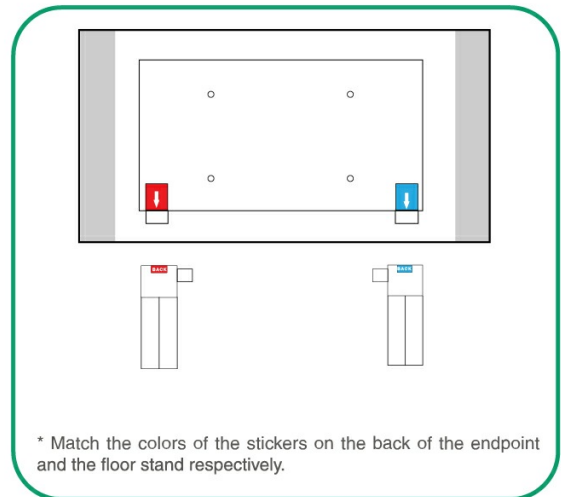
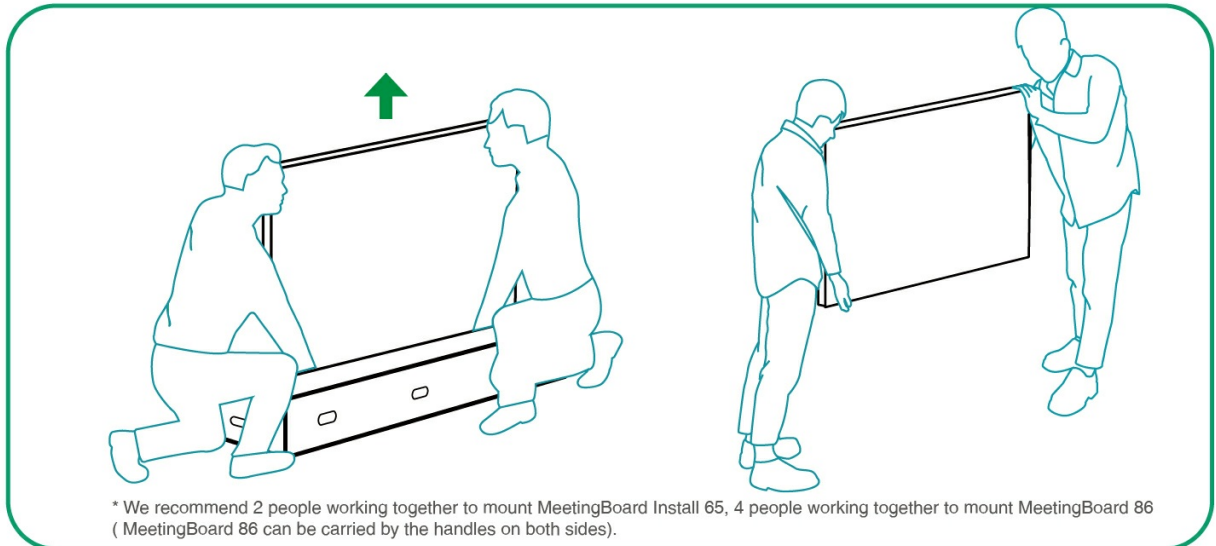
4. Install MB-CAM (Optional)

 MB-CAM is optional. If you have not purchased, skip this step.

Remove the top cover of the endpoint

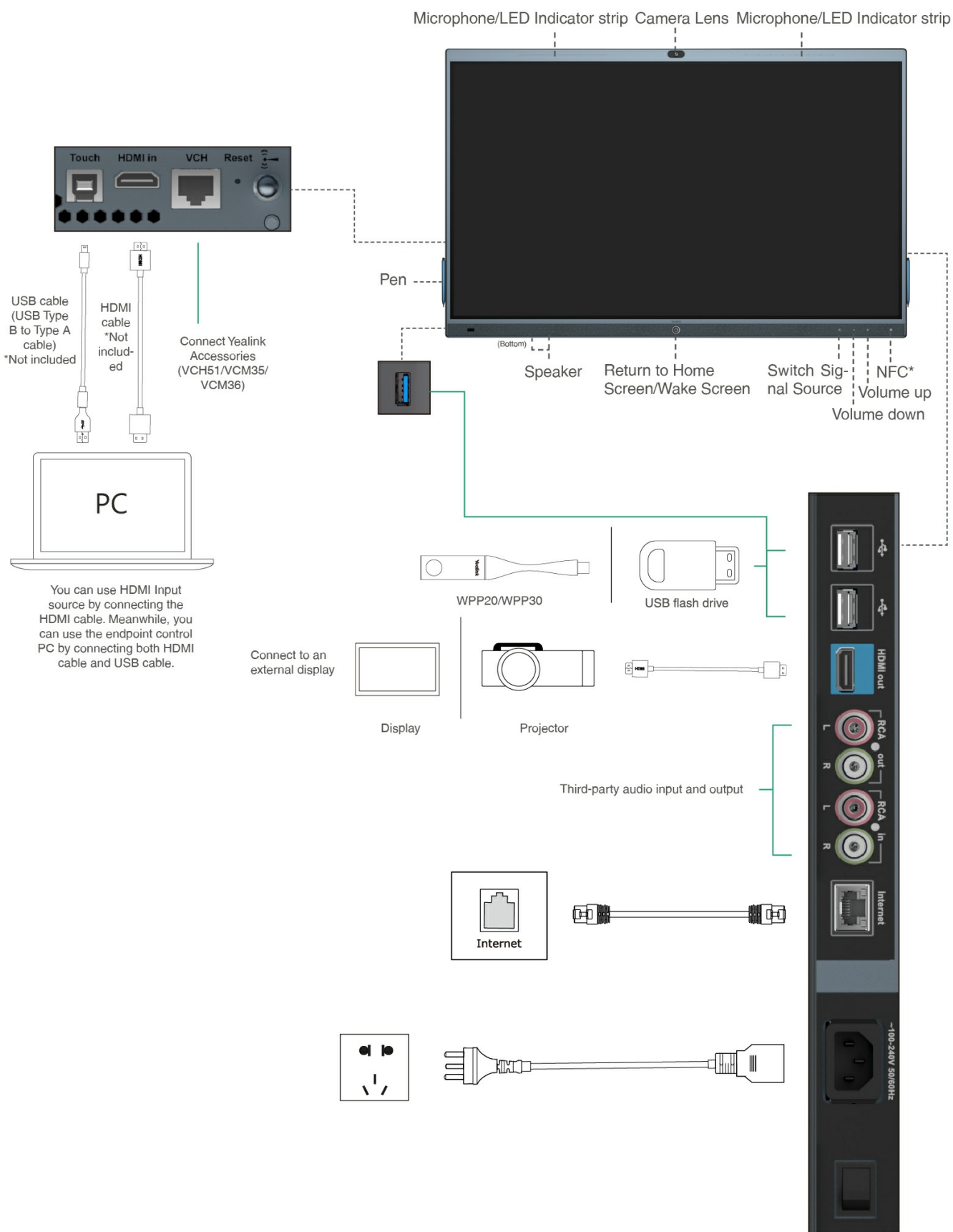


5. Raise the endpoint, mount the endpoint into the floor stand, and tighten the screws on both sides of the legs of the floor stand



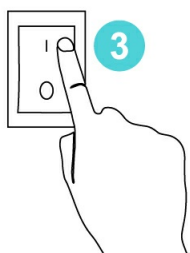
Unlock the scroll wheels to move after installing.

Hardware Component Instructions




*Coming Soon

Power On

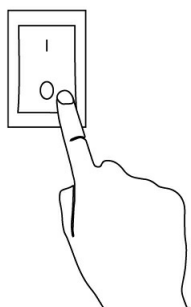


1. Insert the end of the power cable into the power port of the endpoint.
2. Insert the power cord plug into the outlet.
3. Turn the rocker switch button on the right rear of the endpoint to "I" to turn on the endpoint.

Upon first power-on of the endpoint, follow the on-screen setup wizard to configure language, time, network, etc., to initialize the configuration. The initialization operations vary with software versions.

 After the endpoint is started for the first time or restored to factory settings, go to settings on the touchscreen to configure the admin password (default password:0000).

Power Outage



Turn the rocker switch button on the right rear of the endpoint to "O" to turn off the endpoint.

After installing the deployment, you can refer to [Quick Setup](#) to set up the MeetingBoard. After setup, please refer to [Quick Usage](#) to learn about general functions.