

## PERFORMANCE

### Processor

MediaTek Kompanio 520 (8C, 2x A76 @2.05GHz + 6x A55 @2.0GHz)

### Graphics

Integrated ARM Mali-G52 2EE MC2 GPU

### Chipset

MediaTek SoC Platform

### Memory

4GB Soldered LPDDR4x-3733

### Memory Slots

Memory soldered to systemboard, no slots, dual-channel

### Max Memory

4GB soldered memory, not upgradable

### Storage

32GB eMMC 5.1

### Storage Support<sup>[1]</sup>

32GB eMMC 5.1 on systemboard

### Storage Slot

eMMC on systemboard, no slots

### Card Reader

No card reader

### Audio Chip

High Definition (HD) Audio

### Speakers

Stereo speakers, 2W x2, optimized with Waves MaxxAudio®

### Camera

HD 720p with Privacy Shutter

### Microphone

Mono

### Battery

Integrated 47Wh

### Power Adapter

45W USB-C® (3-pin)

## DESIGN

### Display

11.6" HD (1366x768) TN 250nits Anti-glare 60Hz

### Touchscreen

None

### Keyboard

Non-backlit, English (UK)

### Case Color

Graphite Grey

### Surface Treatment

Texture

### Case Material

PC-ABS (Top), PC-ABS (Bottom)

### Pen

No Support

### Dimensions (WxDxH)<sup>[2]</sup>

287 x 200 x 18.6 mm (11.3 x 7.9 x 0.73 inches)

### Weight<sup>[3]</sup>

Around 1.23 kg (2.71 lbs)

## SOFTWARE

### Operating System

ChromeOS

### Bundled Software

None

## CONNECTIVITY

### Ethernet

No Onboard Ethernet

### WLAN + Bluetooth<sup>[4][5]</sup>

MediaTek Wi-Fi® 6 MT7921, 11ax 2x2 + BT5.1

### WWAN

None

### SIM Card

None

### Standard Ports

- 2x USB 3.2 Gen 1
- 1x USB-C 3.2 Gen 1 (support data transfer, Power Delivery and DisplayPort™)
- 1x HDMI® 1.4b
- 1x Headphone / microphone combo jack (3.5mm)

## SECURITY & PRIVACY

### Security Chip

Google Security Chip H1

### Fingerprint Reader

None

### Physical Locks

Kensington® Nano Security Slot™

### Other Security

Camera privacy shutter

## SERVICE

### Base Warranty

1-year, Courier or Carry-in

### Included Upgrade

None

## CERTIFICATIONS

### Green Certifications<sup>[6]</sup>

- ENERGY STAR® 8.0
- EPEAT™ Gold Registered
- ErP Lot 6/26
- TCO Certified 9.0
- RoHS compliant

### Other Certifications

ASTM F963 test passed

### Mil-Spec Test

MIL-STD-810H military test passed

## MODEL

TopSeller : Yes

Announce Date : 2023-02-10

EAN / UPC / JAN : 0196803643893

End of Support : N/A



Product image is a sample, it may not match the real color of this model  
Note:

<sup>[1]</sup> The storage capacity supported is based on the test results with current Lenovo storage offerings.

<sup>[2]</sup> The system dimensions may vary depending on configurations.

<sup>[3]</sup> The system weight is approximate and based on results in Lenovo lab, which varies depending on the source of component, variance of the distribution of each component, and manufacturing process. It may not be the exact weight for each specific model.

<sup>[4]</sup> Bluetooth 5.2 is hardware ready but may run at a lower version due to OS limitations.

<sup>[5]</sup> Wi-Fi 6 full features might be limited by country-level restrictions.

<sup>[6]</sup> EPEAT is registered where applicable, please see <https://www.epeat.net> for registration status by country. · Lenovo reserves the right to change specifications without notice.

To see more note information, please link to

<https://psref.lenovo.com/Detail/2188?M=82W00003UK>

## Premium Care - Advanced Support from Real People. Real Fast.



### REAL PERSON

Choose how you want to reach us - through the phone, chat or email - our expert technicians will take care of you.



### REAL FAST

Highly trained technicians will provide you real-time solutions, whatever the issue, on your first contact. If needed, our team will schedule an onsite visit for the next business day.



### HASSLE FREE

'Getting started' and 'how-to' assistance for hardware and software. Easy solutions that are simple to reach - that's how Premium Care delivers you the ideal support experience.



### PC HEALTH CHECK

Free annual PC Health Check that allows our experts to spot issues before you do so they can resolve them quickly and help you avoid PC problems.

## Accidental Damage Protection - Protection of your PC from the unexpected.

Experience shows that a significant portion of devices may be damaged (and not covered under warranty) in the first three years. Lenovo's Accidental Damage Protection service covers accidents beyond the system warranty such as drops, spills, bumps and even electrical surges. Make sure your new device has maximum protection, avoid unplanned costs and get peace of mind.

## Base Warranty – Included with the systems you purchase, default 1- or 3-year coverage window.

## Warranty Extensions & Upgrades – Service and protection that's right for your circumstances.

- Pick Up & Return Courier
- Onsite Support
- Technician Installed Customer
- Replaceable Unit Service
- International Warranty Upgrade

Lenovo may not offer the products, services or features discussed in this document in all regions. Lenovo may withdraw an offering at any time. Consult your local representative for information on offerings available in your area. Lenovo reserves the right to change specifications or other product information without notice. Lenovo is not responsible for photographic or typographical errors. Lenovo provides this publication "as is" without warranty of any kind, either express or implied, including the implied warranties of merchantability or fitness for a particular purpose.

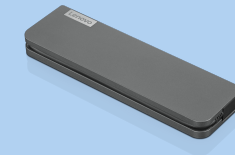
## Recommended Accessories



### ThinkPad Universal USB-C Dock

40AY0090US

THE SMARTER WAY TO WORK Introducing the ThinkPad Universal USB-C Dock. This advanced, universally compatible one-cable docking solution lets you work smarter, not harder. It comes with a vast array of ports, next-gen ...



### Lenovo USB-C Mini Dock\_US

40AU0065US

Expand Your Potential with An Universal Mini Dock; Lenovo understands that modern business depends on a wide variety of PC's and even brands to meet their business needs. To make this easier Lenovo USB-C Mini dock is ...

For a full list of accessories and services, please visit:  
<https://smartfind.Lenovo.com>

Lenovo

PSREF  
Product Specifications  
Reference