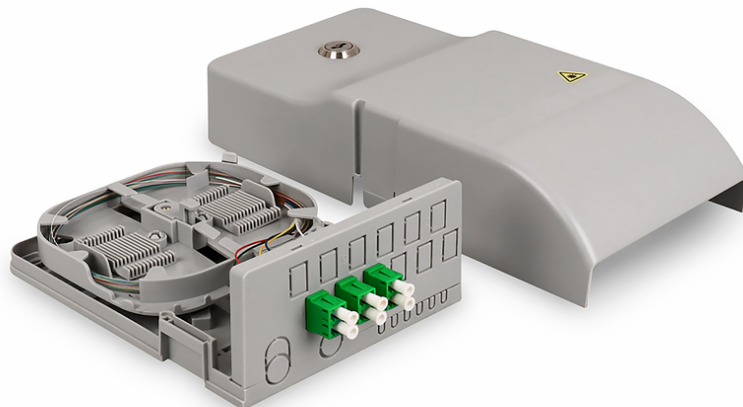


DIGITUS FttH Home Distribution Unit, 3 x LC/APC duplex

DN-949103
EAN 4016032487630



FttH Home Distribution Unit, 3 x LC/APC Duplex OS2, IP54, Splice ready

The distribution unit is assembled via a 3-part housing. The base plate is attached at the desired location and thus ensures free working in the distributor. Via the intelligent cable guide, the cable can be laid down and fixed without any difficulties. The base plate also has a PLC splitter holder and various cable entry options. Two cut-outs on the base plate allow the insertion of 7mm or 12mm microducts. The receptacle on the base plate provides space for a splice receptacle, which can be replaced by any splice or shrink receptacles. The space of the bottom plate as well as the crimp holder can be used for a through splice. The second attachment contains the versatile splice cassette, which can accommodate up to 12 couplings, providing space for 24 fibers. The twelve knockouts can be equipped with up to 12 LC duplex, 12 SC simplex or 12 E-2000® couplers. The two receptacles in the splice cassette are occupied by two crimp splice holders for twelve fibers each. These can be replaced with standard splice or shrink fixtures. Finally, the wall box is protected by a long lid, which prevents access by the subscriber. The lid can also be locked via the built-in cylinder lock. On the side there is a device for sealing the splice box.

It offers a wide range of functions which is needed in your FttH broadband project in a compact and smart design.

- Three flexible head receptacles with splice receptacles for crimp splice protection
- Patch cord entry protected by long cover

- PLC splitter receptacle
- Lockable via built-in lock
- Bending radius optimized "stressless" fiber guide
- Suitable for wall mounting
- Material: plastic (ABS)
- 2 inlets for 7/12mm microducts
- Accommodates up to 2 gas blockers
- Pigtails: mounted, set off, color coded according to IEC 60304 and stored in the cassette
- Capacity: 3 x LC duplex
- Removable splice cassette with pigtail overlength memory
- Dimensions (HxWxD): 256 x 122 x 59mm
- Operating temperature: -25/+70° C
- Storage temperature: -40/+90° C
- IL: max. 0.20dB 1.2
- RL: min. 60dB 1.3

Package contents

- FttH Home Distribution Unit (termination point line technology) with couplings, light gray
- 3 x LC/APC DX-SM couplings, green plastic housing with ceramic sleeve
- 3 x LC/APC DX-SM couplings, green plastic housing with ceramic sleeve
- 6 x LC/APC-SX pigtails E9/125µm G657A1 OS2 - 1.5m cylinder lock with 2 keys
- 3 anchors with matching screws

Logistics						
	Number (pcs)	Weight (kg)	Depth (cm)	Width (cm)	Height (cm)	cm³
Packaging Unit Carton	1	0.70	30.00	14.00	7.00	2,940.00
Packaging Unit Inside	1	0.70	30.00	14.00	7.00	2,940.00
Packaging Unit Single	1	0.70	30.00	14.00	11.00	4,620.00
Net single without Packaging	1	0.27	25.00	13.00	7.00	0.00

