



新普科技股份有限公司
 新世電子(常熟)有限公司
 新普科技(重慶)有限公司
 華普電子(常熟)有限公司

Control Number: SASU-2209001

Rechargeable Li-ion Battery UN38.3 Test Report

Recommendations on the TRANSPORT OF DANGEROUS GOODS

(Manual of Tests and Criteria, Seventh revised edition)

Customer: ASUS

Model: C41N2208

Rating/ Mass: 15.48V, 40Wh/ 144(g)

Version of Test Report: 01

Issue date: 2022/09/08

Approved By	Checked By	Prepared By
Project Manager	Authorized Signatory	Test Engineer
<i>Sung Jin</i>	<i>Emah Huang</i>	<i>Jay Lin</i>

●	<p>SIMPLO TECHNOLOGY CO., LTD. ADD : No. 471 Pa Teh Rd, Sec 2 Hu Kou, Hsinchu Hsien, 303 Taiwan TEL: +886-3-5695920 FAX: +886-3-5695931</p>	
	<p>SIMPLO TECHNOLOGY (CHANGSHU) INC. ADD : No.888 Dongnan Avenue, Changshu New & Hi-Tech Industrial Development Zone, Changshu, Jiangsu, China TEL: +86-512-52302255 FAX: +86-512-52302277</p>	
	<p>SIMPLO TECHNOLOGY (CHONGQING) INC. ADD : No.2 Zongbao Avenue, Shapingba District, ChongQing, China TEL: +86-23-61718899 FAX: +86-23-61210488</p>	
	<p>HUAPU TECHNOLOGY (CHANGSHU) INC. ADD : No.888 Dongnan Avenue, Changshu New & Hi-Tech Industrial Development Zone, Changshu, Jiangsu, China TEL: +86-512-52302255 FAX: +86-512-52302277</p>	

Email : Test_Lab@simplo.com.tw

Website : <http://www.simplo.com.tw/>

Form No. : W11-002-B05

本資料為新普科技股份有限公司之智慧財產權，非經本公司書面授權許可，不得透露或使用本資料，亦不得複印、複製或轉變成其它任何形式使用。
 The information contained herein is the exclusive property of SIMPLO TECHNOLOGY CO., LTD, and shall not be distributed, reproduced, or disclosed in whole or in part without prior written permission.

本測試報告僅對上述測試項目有效，本報告分離使用無效

This test report is valid only to the items, Invalid for separation using.



新普科技股份有限公司
 新世電子(常熟)有限公司
 新普科技(重慶)有限公司
 華普電子(常熟)有限公司

Control Number: SASU-2209001

1. Purpose of the Test :

To test each cell/battery is of the type proved to meet the requirements in United Nations Recommendations on the TRANSPORT OF DANGEROUS GOODS, Manual of Tests and Criteria, Seventh revised edition, Section 38.3.

2. Test Result :

Test results of the UN Recommendations on the Transport of Dangerous Goods

No.	Test Item	Test results
T.1	Altitude simulation	PASS
T.2	Thermal test	PASS
T.3	Vibration test	PASS
T.4	Shock test	PASS
T.5	External short circuit	PASS
T.6	Impact, Crush test	PASS
T.7	Overcharge	PASS
T.8	Forced discharge	PASS

3. Test Lab: Email : Test_Lab@simplo.com.tw Website : <http://www.simplo.com.tw/>

●	SIMPLO (Taiwan) Laboratory ADD : No. 471 Pa Teh Rd, Sec 2 Hu Kou, Hsinchu Hsien, 303 Taiwan TEL: +886-3-5695920 FAX: +886-3-5695931
	SIMPLO (CHANGSHU) Laboratory ADD : No.888 Dongnan Avenue, Changshu New & Hi-Tech Industrial Development Zone, Changshu, Jiangsu, China TEL: +86-512-52302255 FAX: +86-512-52302277
	SIMPLO (CHONGQING) Laboratory. ADD : No.2 Zongbao Avenue, Shapingba District, ChongQing, China TEL: +86-23-61718899 FAX: +86-23-61210488

Form No. : W11-002-B05

本資料為新普科技股份有限公司之智慧財產權，非經本公司書面授權許可，不得透露或使用本資料，亦不得複印、複製或轉變成其它任何形式使用。
 The information contained herein is the exclusive property of SIMPLO TECHNOLOGY CO., LTD, and shall not be distributed, reproduced, or disclosed in whole or in part without prior written permission.

本測試報告僅對上述測試項目有效，本報告分離使用無效

Page 2 of 8

This test report is valid only to the items, Invalid for separation using.



新普科技股份有限公司
 新世電子(常熟)有限公司
 新普科技(重慶)有限公司
 華普電子(常熟)有限公司

Control Number: SASU-2209001

4. Product manufacturer : Email : Test_Lab@simplo.com.tw Website : <http://www.simplo.com.tw/>

●	SIMPLO TECHNOLOGY CO., LTD. ADD : No. 471 Pa Teh Rd, Sec 2 Hu Kou, Hsinchu Hsien, 303 Taiwan TEL: +886-3-5695920 FAX: +886-3-5695931
	SIMPLO TECHNOLOGY (CHANGSHU) INC. ADD : No.888 Dongnan Avenue, Changshu New & Hi-Tech Industrial Development Zone, Changshu, Jiangsu, China TEL: +86-512-52302255 FAX: +86-512-52302277
●	SIMPLO TECHNOLOGY (CHONGQING) INC. ADD : No.2 Zongbao Avenue, Shapingba District, ChongQing, China TEL: +86-23-61718899 FAX: +86-23-61210488
	HUAPU TECHNOLOGY (CHANGSHU) INC. ADD : No.888 Dongnan Avenue, Changshu New & Hi-Tech Industrial Development Zone, Changshu, Jiangsu, China TEL: +86-512-52302255 FAX: +86-512-52302277

5. Test Quantity :

- 5.1 Four batteries, at first cycle, in fully charged states. (For T.1~T.5)
- 5.2 Four batteries, after 25 cycles ending in fully charged states. (For T.1~T.5)
- 5.3 Five component cells, at first cycle at 50% of the design rated capacity. (For T.6)
- 5.4 Five component cells, after 25 cycles at 50% of the design rated capacity. (For T.6)
- 5.5 Four batteries, at first cycle, in fully charged states. (For T.7)
- 5.6 Four batteries, after 25 cycles ending in fully charged states. (For T.7)
- 5.7 Ten component cells, at first cycle in fully discharge states. (For T.8)
- 5.8 Ten component cells, after 25 cycles ending in fully discharged states. (For T.8)

Form No. : W11-002-B05

本資料為新普科技股份有限公司之智慧財產權，非經本公司書面授權許可，不得透露或使用本資料，亦不得複印、複製或轉變成其它任何形式使用。
 The information contained herein is the exclusive property of SIMPLO TECHNOLOGY CO., LTD, and shall not be distributed, reproduced, or disclosed in whole or in part without prior written permission.

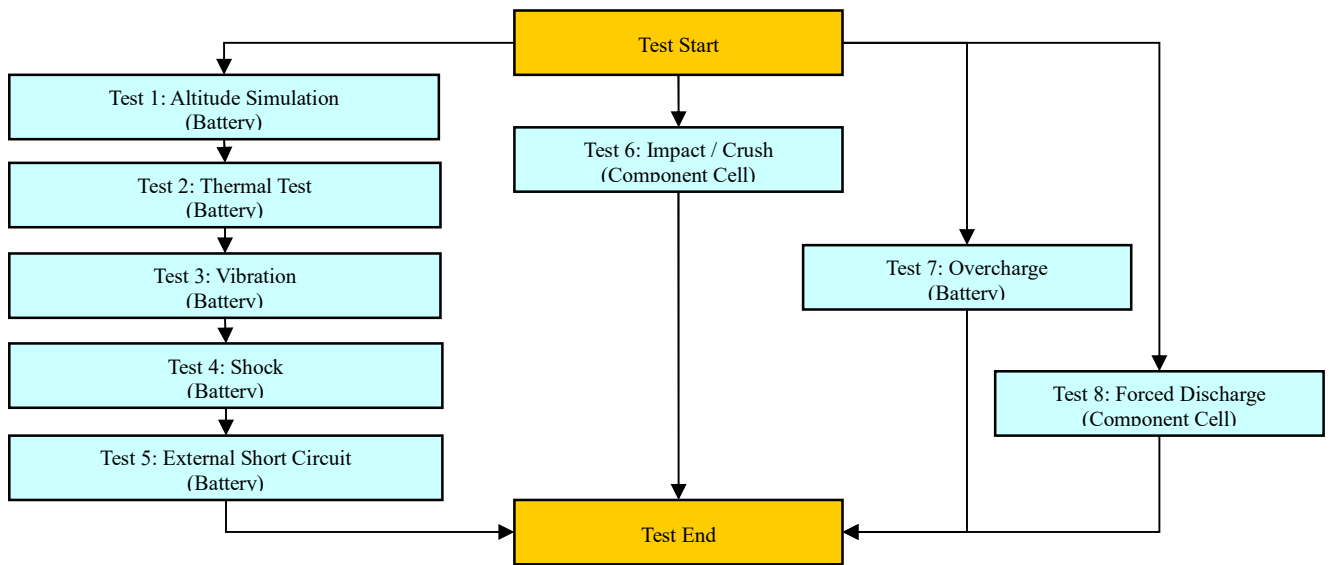
本測試報告僅對上述測試項目有效,本報告分離使用無效
 This test report is valid only to the items, Invalid for separation using.



6. Test Procedure :

6.1 All detailed test procedures must be based on United Nations Recommendations on the TRANSPORT OF DANGEROUS GOODS, Manual of Tests and Criteria, Seventh revised edition, Section 38.3.

6.2 Test flow shall be followed as below.



Conclusion: The samples had passed the test items of UN38.3.

7. Comment :

Version	Modify content	Issue date
01	First publish	2022/09/08

Form No. : W11-002-B05

本資料為新普科技股份有限公司之智慧財產權，非經本公司書面授權許可，不得透露或使用本資料，亦不得複印、複製或轉變成其它任何形式使用。
 The information contained herein is the exclusive property of SIMPLO TECHNOLOGY CO., LTD, and shall not be distributed, reproduced, or disclosed in whole or in part without prior written permission.

本測試報告僅對上述測試項目有效,本報告分離使用無效

This test report is valid only to the items, Invalid for separation using.



新普科技股份有限公司
 新世電子(常熟)有限公司
 新普科技(重慶)有限公司
 華普電子(常熟)有限公司

Control Number: SASU-2209001

8. Test Equipment :

SMP SIMPLO TECHNOLOGY CO., LTD.

Address : No.471, Sec.2, Pa Teh Rd., Hu Kou, Hsin Chu Hsien 303, Taiwan

TEL: +886-3-5695920; FAX: +886-3-5695931

Revised Date: 2022-09-08

Test Instruments Reference List								
Used	Instrument ID	Instrument Name	Type	Range of use	Manufacturer	Calibration Date_Last	Calibration Date_Next	Remarks
Pretest								
V	ML-761	Learning	715C	0~18V 0~8A	SMP	2022/1/27	2023/2/27	
V	ML-762	Learning	715C	0~18V 0~8A	SMP	2022/1/4	2023/2/4	
V	ML-763	Learning	715C	0~18V 0~8A	SMP	2022/1/27	2023/2/27	
V	ML-764	Learning	715C	0~18V 0~8A	SMP	2022/1/4	2023/2/4	
	ML-925	Learning	750C8	0~60V 0~30A	SMP	2022/1/4	2023/2/4	
T.1 Altitude Simulation								
V	ML-522	Altitude	SVT-120	kPa:30~90	HSIN JIANG	2022/6/2	2023/7/2	
V	ML-257	Multimeter	34401A	Note 1	Agilent	2022/1/26	2023/2/26	
V	ML-995	Electronic Balance	UX1020H	1-1220 gf	SHIMADZU	2022/1/4	2023/2/4	
	ML-1035	Electronic Balance	JWI-700W	30*0.005kg	JADEVER	2022/6/2	2023/7/2	
V	ML-550	Data Logger	313	15~35 ℃; 30~80 %RH	CENTER	2022/7/8	2023/8/8	
V	ML-964	Barometric Air Pressure	MP55	750 to 1100 mbar	KIMO	2022/6/6	2023/7/6	
T.2 Thermal Test								
V	ML-789	Thermal Shock	GTST-080-65-AW	T:-40 to 100℃	GF	2022/1/4	2023/2/4	
V	ML-257	Multimeter	34401A	note 1	Agilent	2022/1/26	2023/2/26	
V	ML-995	Electronic Balance	UX1020H	1-1220 gf	SHIMADZU	2022/1/4	2023/2/4	
	ML-1035	Electronic Balance	JWI-700W	30*0.005kg	JADEVER	2022/6/2	2023/7/2	
V	ML-551	Data Logger	313	15~35 ℃; 30~80 %RH	CENTER	2022/7/8	2023/8/8	
T.3 Vibration								
V	ML-233	Vibration	KD-9363-EM-300F2K-30N80	F:5~2000Hz G:0.2~20G	King Design	2022/7/25	2023/8/25	
V	ML-257	Multimeter	34401A	note 1	Agilent	2022/1/26	2023/2/26	
V	ML-995	Electronic Balance	UX1020H	1-1220 gf	SHIMADZU	2022/1/4	2023/2/4	
	ML-1035	Electronic Balance	JWI-700W	30*0.005kg	JADEVER	2022/6/2	2023/7/2	
V	ML-552	Data Logger	313	15~35 ℃; 30~80 %RH	CENTER	2022/7/8	2023/8/8	
T.4 Shock								
V	ML-056	Shock	DP-1200-25	G:10~600G	King Design	2022/7/25	2023/8/25	
V	ML-257	Multimeter	34401A	note 1	Agilent	2022/1/26	2023/2/26	
V	ML-995	Electronic Balance	UX1020H	1-1220 gf	SHIMADZU	2022/1/4	2023/2/4	
	ML-1035	Electronic Balance	JWI-700W	30*0.005kg	JADEVER	2022/6/2	2023/7/2	
V	ML-551	Data Logger	313	15~35 ℃; 30~80 %RH	CENTER	2022/7/8	2023/8/8	
T.5 External Short Circuit								
V	ML-894	Battery Hilester	BT3562	10mΩ ~ 30kΩ	HIOKI	2022/4/14	2023/5/14	
V	ML-257	Multimeter	34401A	note 1	Agilent	2022/1/26	2023/2/26	
V	ML-459	Data Acquisition	MX100-E-1D	1-100 Vdc, -50 to 200℃	Yokogawa	2022/7/6	2023/8/6	
V	ML-460	Data Acquisition	MX100-E-1D	1-100 Vdc, -50 to 200℃	Yokogawa	2022/7/6	2023/8/6	
V	ML-521	Oven	9031	30~80 ℃	YEOW LONG	2022/8/3	2023/9/3	
V	ML-1083	Data Logger	1161	15~35 ℃; 30~80 %RH	TES	2021/9/13	2022/10/13	
T.6 Impact / Crush								
V	ML-458	Data Acquisition	XL122-D	1-100 Vdc, -50 to 150℃	Yokogawa	2022/4/28	2023/5/28	
	ML-1016	Impact Tester	KD-2054E		King Design	2022/3/23	2023/4/23	
	ML-553	Crush Tester	BCT-01		Simplo	2022/3/23	2023/4/23	
V	ML-866	Crush Tester	M0654		JYI SHENG	2022/3/23	2023/4/23	
V	ML-1083	Data Logger	1161	15~35 ℃; 30~80 %RH	TES	2021/9/13	2022/10/13	
	ML-459	Data Acquisition	MX100-E-1D	1-100 Vdc, -50 to 200℃	Yokogawa	2022/7/6	2023/8/6	

Form No. : W11-002-B05

本資料為新普科技股份有限公司之智慧財產權，非經本公司書面授權許可，不得透露或使用本資料，亦不得複印、複製或轉變成其它任何形式使用。
 The information contained herein is the exclusive property of SIMPLO TECHNOLOGY CO., LTD, and shall not be distributed, reproduced, or disclosed in whole or in part without prior written permission.

本測試報告僅對上述測試項目有效,本報告分離使用無效

Page 5 of 8

This test report is valid only to the items, Invalid for separation using.



新普科技股份有限公司
 新世電子(常熟)有限公司
 新普科技(重慶)有限公司
 華普電子(常熟)有限公司

Control Number: SASU-2209001

SMP SIMPLO TECHNOLOGY CO., LTD.

Address : No.471, Sec.2, Pa Teh Rd., Hu Kou, Hsin Chu Hsien 303, Taiwan

TEL: +886-3-5695920; FAX: +886-3-5695931

Revised Date: 2022-09-08

Test Instruments Reference List								
Used	Instrument ID	Instrument Name	Type	Range of use	Manufacturer	Calibration Date_Last	Calibration Date_Next	Remarks
T.7 Overcharge								
V	ML-482	Programmable DC Source	DS10014	1-100Vdc, 0.3-14.4A	MOTECH	2022/4/28	2023/5/28	
V	ML-484	Programmable DC Source	DS10014	1-100Vdc, 0.3-14.4A	MOTECH	2022/4/28	2023/5/28	
V	ML-904	Programmable DC Source	DS10014-MO	1-100Vdc, 0.3-14.4A	B&K Precision	2022/4/28	2023/5/28	
V	ML-487	Programmable DC Source	DS6024	1-60 Vdc, 0.3-24A	MOTECH	2022/4/28	2023/5/28	
V	ML-488	Programmable DC Source	DS6024	1-60 Vdc, 0.3-24A	MOTECH	2022/4/28	2023/5/28	
V	ML-1083	Data Logger	1161	15-35 ℃; 30-80 %RH	TES	2021/9/13	2022/10/13	
V	ML-459	Data Acquisition	MX100-E-1D	1-100 Vdc, -50 to 200℃	Yokogawa	2022/7/6	2023/8/6	
V	ML-460	Data Acquisition	MX100-E-1D	1-100 Vdc, -50 to 200℃	Yokogawa	2022/7/6	2023/8/6	
	ML-918	Overcharge & Forced discharge tester	T901	3~30 Vdc, Charge: 0.05~20A Discharge: 0.02~10A	SMP	2022/4/28	2023/5/28	
T.8 Forced Discharge								
V	ML-894	Battery Hitester	BT3562	10mΩ ~ 30kΩ	HIOKI	2022/4/14	2023/5/14	
V	ML-132	Electronic Load	3311C	60V,60A, 300W	Prodigit	2022/1/25	2023/2/25	
V	ML-133	Electronic Load	3311C	60V,60A, 300W	Prodigit	2022/1/25	2023/2/25	
V	ML-136	Electronic Load	3311C	60V,60A, 300W	Prodigit	2022/1/25	2023/2/25	
V	ML-192	Electronic Load	3311C	60V,60A, 300W	Prodigit	2022/1/25	2023/2/25	
V	ML-269	Electronic Load	3311C	60V,60A, 300W	Prodigit	2022/1/25	2023/2/25	
V	ML-532	DC Electronic Load	33511-01	120V, 240A, 3600W	Prodigit	2022/5/30	2023/6/30	
V	ML-482	Programmable DC Source	DS10014	1-100Vdc, 0.3-14.4A	MOTECH	2022/4/28	2023/5/28	
V	ML-484	Programmable DC Source	DS10014	1-100Vdc, 0.3-14.4A	MOTECH	2022/4/28	2023/5/28	
V	ML-904	Programmable DC Source	DS10014-MO	1-100Vdc, 0.3-14.4A	B&K Precision	2022/4/28	2023/5/28	
V	ML-487	Programmable DC Source	DS6024	1-60 Vdc, 0.3-24A	MOTECH	2022/4/28	2023/5/28	
V	ML-488	Programmable DC Source	DS6024	1-60 Vdc, 0.3-24A	MOTECH	2022/4/28	2023/5/28	
V	ML-1083	Data Logger	1161	15-35 ℃; 30-80 %RH	TES	2021/9/13	2022/10/13	
V	ML-459	Data Acquisition	MX100-E-1D	1-100 Vdc, -50 to 200℃	Yokogawa	2022/7/6	2023/8/6	
V	ML-460	Data Acquisition	MX100-E-1D	1-100 Vdc, -50 to 200℃	Yokogawa	2022/7/6	2023/8/6	
	ML-918	Overcharge & Forced discharge tester	T901	3~30 Vdc, Charge: 0.05~20A Discharge: 0.02~10A	SMP	2022/4/28	2023/5/28	
Note 1: DC Voltage: 0.1-1000V; AC Voltage: 0.5-700V at 60Hz, 1kHz; Resistance: 10Ω-10MΩ; DC Current: 0.1mA-3A; AC Current: 0.01-3A at 60Hz, 0.01-1A, at 1kHz.								

Form No. : W11-002-B05

本資料為新普科技股份有限公司之智慧財產權，非經本公司書面授權許可，不得透露或使用本資料，亦不得複印、複製或轉變成其它任何形式使用。
 The information contained herein is the exclusive property of SIMPLO TECHNOLOGY CO., LTD, and shall not be distributed, reproduced, or disclosed in whole or in part without prior written permission.

本測試報告僅對上述測試項目有效,本報告分離使用無效
 This test report is valid only to the items, Invalid for separation using.



新普科技股份有限公司
 新世電子(常熟)有限公司
 新普科技(重慶)有限公司
 華普電子(常熟)有限公司

Control Number: SASU-2209001

9. T.1~T.8 Detail Reports:

UN 38.3 Test Datasheet
 UN38.3/ST/SG/AC.10/11/Rev.7

Control Number: SASU-2209001	Customer: ASUS	Model Name: C41N2208	SMP Project Name: NR2301
Pack P/N: 906QA358H (B)	Configuration: 4S1P	Test Duration: 2022/08/22~2022/09/08	Reviewer: Esmond
Cell Vendor: COSMX	Cell Model: CA444279F	Cell P/N: 110-2622HB	N/A

Test Sample Identification: Large Battery Small Battery Single-cell Battery

Battery Pack						Component Cell		
Used	Sample No.	Sample State	Used	Sample No.	Sample State	Used	Sample No.	Sample State
V	01-04	1 Cycle, Fully charged	V	05-08	25 Cycles, Fully charged	V	01C-05C	1 Cycle, 50% SOC
V	09-12	1 Cycle, Fully charged	V	13-16	25 Cycles, Fully charged	V	06C-10C	25 Cycles, 50% SOC
						V	11C-20C	1 Cycle, Fully discharged (0% SOC)
						V	21C-30C	25 Cycles, Fully discharged (0% SOC)

T.1 Altitude Simulation

Start time: 2022/08/29 08:36	Ambient temp.: 23.8 °C						Operator: Jay		
Finish time: 2022/08/29 15:40	Sample 01	Sample 02	Sample 03	Sample 04	Sample 05	Sample 06	Sample 07	Sample 08	
OCV (V)	Before	17.281	17.269	17.270	17.264	17.277	17.283	17.275	17.280
	After	17.263	17.254	17.257	17.244	17.263	17.266	17.256	17.267
	Residual OCV %	99.90%	99.91%	99.92%	99.88%	99.92%	99.90%	99.89%	99.92%
Mass (g)	Before	143.225	143.097	143.161	143.101	143.145	143.202	143.096	143.218
	After	143.220	143.093	143.157	143.098	143.141	143.200	143.092	143.214
	Mass loss %	0.00%	0.00%	0.00%	0.00%	0.00%	0.00%	0.00%	0.00%
Results	P	P	P	P	P	P	P	P	

T.2 Thermal Test

Start time: 2022/08/29 16:01	Ambient temp.: 24.4 °C						Operator: Jay		
Finish time: 2022/09/05 08:32	Sample 01	Sample 02	Sample 03	Sample 04	Sample 05	Sample 06	Sample 07	Sample 08	
OCV (V)	Before	17.263	17.254	17.257	17.244	17.263	17.266	17.256	17.267
	After	17.064	17.059	17.068	17.048	17.071	17.066	17.066	17.075
	Residual OCV %	98.85%	98.87%	98.90%	98.86%	98.89%	98.84%	98.90%	98.89%
Mass (g)	Before	143.220	143.093	143.157	143.098	143.141	143.200	143.092	143.214
	After	143.205	143.082	143.143	143.080	143.125	143.183	143.076	143.195
	Mass loss %	0.01%	0.01%	0.01%	0.01%	0.01%	0.01%	0.01%	0.01%
Results	P	P	P	P	P	P	P	P	

T.3 Vibration

Start time: 2022/09/05 08:57	Ambient temp.: 23.7 °C						Operator: Jay		
Finish time: 2022/09/06 08:44	Sample 01	Sample 02	Sample 03	Sample 04	Sample 05	Sample 06	Sample 07	Sample 08	
OCV (V)	Before	17.064	17.059	17.068	17.048	17.071	17.066	17.066	17.075
	After	17.039	17.029	17.038	17.021	17.048	17.037	17.034	17.046
	Residual OCV %	99.85%	99.82%	99.82%	99.84%	99.87%	99.83%	99.81%	99.83%
Mass (g)	Before	143.205	143.082	143.143	143.080	143.125	143.183	143.076	143.195
	After	143.200	143.078	143.140	143.075	143.122	143.178	143.072	143.190
	Mass loss %	0.00%	0.00%	0.00%	0.00%	0.00%	0.00%	0.00%	0.00%
Results	P	P	P	P	P	P	P	P	

T.4 Shock

Start time: 2022/09/06 09:08	Ambient temp.: 23.8 °C						Operator: Jay		
Finish time: 2022/09/06 12:57	Sample 01	Sample 02	Sample 03	Sample 04	Sample 05	Sample 06	Sample 07	Sample 08	
OCV (V)	Before	17.039	17.029	17.038	17.021	17.048	17.037	17.034	17.046
	After	17.023	17.012	17.030	17.005	17.035	17.026	17.019	17.036
	Residual OCV %	99.91%	99.90%	99.95%	99.91%	99.92%	99.94%	99.91%	99.94%
Mass (g)	Before	143.200	143.078	143.140	143.075	143.122	143.178	143.072	143.190
	After	143.197	143.077	143.138	143.072	143.121	143.178	143.072	143.190
	Mass loss %	0.00%	0.00%	0.00%	0.00%	0.00%	0.00%	0.00%	0.00%
Results	P	P	P	P	P	P	P	P	

Form No. : W11-002-B05

本資料為新普科技股份有限公司之智慧財產權，非經本公司書面授權許可，不得透露或使用本資料，亦不得複印、複製或轉變成其它任何形式使用。
 The information contained herein is the exclusive property of SIMPLO TECHNOLOGY CO., LTD, and shall not be distributed, reproduced, or disclosed in whole or in part without prior written permission.

本測試報告僅對上述測試項目有效，本報告分離使用無效
 This test report is valid only to the items, Invalid for separation using.



新普科技股份有限公司
 新世電子(常熟)有限公司
 新普科技(重慶)有限公司
 華普電子(常熟)有限公司

Control Number: SASU-2209001

T.5 External Short Circuit

Start time: 2022/09/06 13:20		Ambient temp.: 24.0 °C						Operator: Jay	
Finish time: 2022/09/07 15:28		Sample 01	Sample 02	Sample 03	Sample 04	Sample 05	Sample 06	Sample 07	Sample 08
OCV (V)	Before	17.023	17.012	17.030	17.005	17.035	17.026	17.019	17.036
	After	0.000	0.000	0.000	0.000	0.000	0.000	0.000	0.000
Resistance (<100mΩ)		89.4	85.8	88.5	83.7	86.9	88.1	84.6	87.7
Max Temp. (< 170°C)		57.5	57.7	57.5	57.4	57.8	57.3	57.7	57.6
Results		P	P	P	P	P	P	P	P

T.6 Impact / Crush (Component Cell)

UN38.3/ST/SG/AC.10/11/Rev.7

□ Impact - Cylindrical cells not less than 18.0 mm in diameter

■ Crush - Prismatic, pouch, coin/button cells and cylindrical cells less than 18.0 mm in diameter

Start time: 2022/08/30 08:54		Ambient temp.: 23.8 °C				Operator: Jay			
Finish time: 2022/08/30 16:04		Sample 01C	Sample 02C	Sample 03C	Sample 04C	Sample 05C	Sample 06C	Sample 07C	Sample 08C
Initial OCV (V)		3.837	3.842	3.848	3.835	3.839			
Max Temp. (< 170°C)		24.0	24.1	24.1	24.0	24.2			
Results		P	P	P	P	P			
Sample No.		Sample 06C	Sample 07C	Sample 08C	Sample 09C	Sample 10C			
Initial OCV (V)		3.844	3.847	3.838	3.840	3.835			
Max Temp. (< 170°C)		24.2	24.0	24.2	24.3	24.1			
Results		P	P	P	P	P			

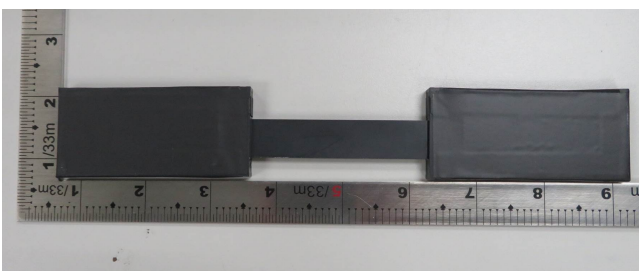
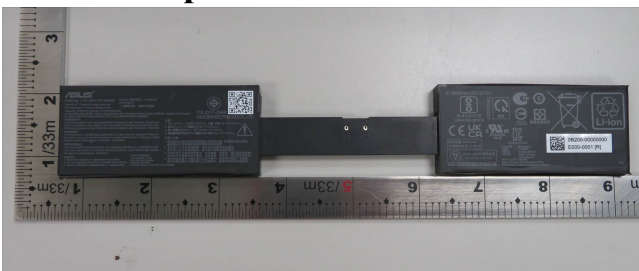
T.7 Overcharge

Start time: 2022/08/29 09:28		Ambient temp.: 23.7 °C						Operator: Jay	
Finish time: 2022/09/07 10:57		Sample 09	Sample 10	Sample 11	Sample 12	Sample 13	Sample 14	Sample 15	Sample 16
Initial OCV (V)		17.284	17.274	17.266	17.261	17.281	17.288	17.275	17.283
Results		P	P	P	P	P	P	P	P

T.8 Forced Discharge (Component Cell)

Start time: 2022/08/31 08:45		Ambient temp.: 23.7 °C						Operator: Jay	
Finish time: 2022/09/08 10:04		Sample 11C	Sample 12C	Sample 13C	Sample 14C	Sample 15C	Sample 16C	Sample 17C	Sample 18C
Initial OCV (V)		3.444	3.452	3.457	3.436	3.450	3.455	3.442	3.437
Results		P	P	P	P	P	P	P	P
Sample No.		Sample 19C	Sample 20C	Sample 21C	Sample 22C	Sample 23C	Sample 24C	Sample 25C	Sample 26C
Initial OCV (V)		3.430	3.464	3.468	3.451	3.446	3.439	3.462	3.460
Results		P	P	P	P	P	P	P	P
Sample No.		Sample 27C	Sample 28C	Sample 29C	Sample 30C				
Initial OCV (V)		3.463	3.444	3.435	3.452				
Results		P	P	P	P				

9. Test Sample:



Form No. : W11-002-B05

本資料為新普科技股份有限公司之智慧財產權，非經本公司書面授權許可，不得透露或使用本資料，亦不得複印、複製或轉變成其它任何形式使用。
 The information contained herein is the exclusive property of SIMPLO TECHNOLOGY CO., LTD, and shall not be distributed, reproduced, or disclosed in whole or in part without prior written permission.

本測試報告僅對上述測試項目有效,本報告分離使用無效
 This test report is valid only to the items, Invalid for separation using.