

SILVERNET

WIRELESS-NETWORK-SOLUTIONS



SALES@SILVERNET.COM

ORDERS@SILVERNET.COM

SUPPORT@SILVERNET.COM

SILVERNET

WIRELESS-NETWORK-SOLUTIONS

Why SilverNet?

SilverNet was founded in 2005. The Managing Director, having worked in the wireless transmission market for many years felt he could offer the industry greatly improved products, solutions and services.

SilverNet has grown steadily since 2005, developing new products as the market evolves. As a British Manufacturer SilverNet have an enviable reputation for providing high quality wireless transmission products and services.

SilverNet have been finalists for communication product of the year for 4 consecutive years with a different product each year, showing consistency across the range.

As an established brand within the security industry SilverNet are finely attuned to the markets specialised needs. The global market offers a multitude of opportunities for SilverNet to expand going forward with equipment which continues to evolve with the market and crosses over into many horizontal markets. This allows SilverNet to remain strong within the industry allowing excellent service, reliability and longevity.

SilverNet offer the following unrivalled services:

Pre-Installation Support and Services

- Site surveys
- Reports and equipment kit lists
- Network design
- Formal quotation and tender assistance

Installation Support and Services

- Ordering and supply process
- Training
- Installation support
- Commissioning and configuration

Post Installation Support and Services

- Telephone and remote access technical support
- Extended warranties
- On-site support
- Upgrades / changes and movements



Direct Telephone

Technical Support

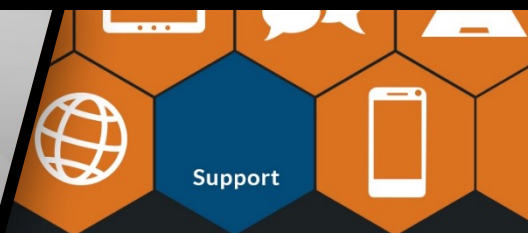
FAQ

Support

Help

Remote & Onsite

Support when you need it



Training & Support

Exceptional UK Support Centre

- UK based dedicated support helpline
- Online ticket system offering support and resolution of any issues
- Our engineers can remote on to your system if required to fault find and assist with your network
- Dedicated support email

Surveys & Commissioning

- On-site support
- Spectrum analysis
- Site visits and network design
- Wi-Fi Coverage Surveys
- Line of Site tests
- Tender support
- Assistance with changes/ movements and expansion of existing sites

Product & Sales Training

- Wireless hardware configuration Training
- Network Management Software Training
- Sales and network system design Training
- At our dedicated training suite in Milton Keynes
- Bespoke training available at your location



Introducing...

 **Aero**
Intelligent Wi-Fi
SILVERNET

Intelligent Wi-Fi Solutions

Key Features

- Integrated FIT AP + Controller Architecture
- Easy to use Interface
- Ultra Fast and powerful AP's that deliver
- Remarkable Performance
- On-site & Cloud Management
- Unlimited AP numbers
- Channel Optimisation
- Real Time Status
- Load Balancing
- Easy Installation
- 1 year warranty as standard

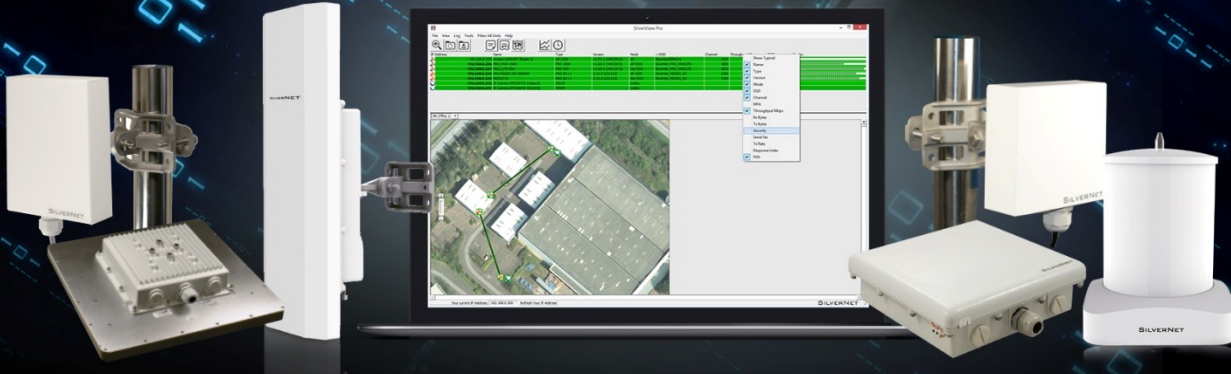


WIFI Radios



	SIL-WCAP-AX-W	SIL-WCAP-AX	SIL-WCAP-X-EXT	SIL-WCAP-EXT+
Frequency	2.4GHz & 5GHz	2.4GHz & 5GHz	2.4GHz & 5GHz	2.4GHz & 5GHz
2.4GHz speed (Mbps)	600	600	600	600
2.4GHz MIMO	2*2	2*2	2*2	2*2
5Ghz speeds (Mbps)	1200	1200	1200	1200
5Ghz MIMO	2*2	2*2	2*2	2*2
PoE	802.3af (48VDC)	802.3af (48VDC)	802.3af (48VDC)	802.3af (48VDC)
Mounting	Wall Mount	Ceiling or Wall Mount	Wall or Pole Mount	Wall or Pole Mount
Tx power	16dBm	20dBm	23dBm	23dBm
Antenna Gain	4*2dBi Dual-Band Omni	4dBi Dual-Band Omni	3dBi (2.4GHz), 6dBi (5GHz) Omni	4dBi Dual-Band Omni
Distance	100m	200m	200m	200m
Users	100+	100+	160+	160+
LAN Ports	1*10/100/1000M BASE-T	1*10/100/1000M BASE-T	2*10/100/1000M BASE-T	2*10/100/1000M BASE-T
Working Temperature	-20°C to 40°C	-30°C to 55°C	-30°C to 70°C	-30°C to 70°C
ESD/Lightning Protection	-	-	-	Yes
Warranty	1 Year			





The 5GHz Pro Range – Outdoor Wireless PTP & PtMP

Key Features

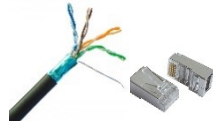
- Equipment operates at the 5GHz RF band (between 5.1GHz and 5.8GHz)
- The Pro Range has an actual data rate of 100Mbps full duplex and can be software upgraded to 240 or 500Mbps
- The Pro Range SIL BASE 500 and SIL MAX 1000 models are capable of 500 and 1000Mbps respectively
- Point-To-Point links to cover distances up to 40KM
- Compact design
- Rugged weatherproof IP66 and IP67 rated enclosures
- Supplied with 3 axis tilt and swivel magnesium alloy bracketry
- 48v Power over Ethernet
- Capable of 256 AES encryption
- 2 year warranty as standard (extendable to 5 years)

5GHz Radios



	SIL MICRO			SIL LITE			SIL MAX				SIL BASE 500-90		SIL BASE 500-360			
Frequency	5.1GHz - 5.8GHz						5.1GHz - 5.8GHz						5.1GHz - 5.8GHz		5.1GHz - 5.8GHz	
Distance	2KM			6KM			20KM				2KM		1KM			
Available throughputs (Mbps)	100	240	500	100	240	500	100	240	500	1000	500		500			
5GHz speeds (Mbps)	300	300	866	300	300	866	300	300	866	1200	866		866			
5GHz MIMO	2*2			2*2			2*2			3*3	2*2 (90x7)		2*2 (360x7)			
PoE	802.3af (48VDC)			802.3af (48VDC)			802.3af (48VDC)				802.3af (48VDC)		802.3af (48VDC)			
Pole Mount	Yes			Yes			Yes				Yes		Yes			
Wall Mount	Yes			Yes			Yes				Yes		Yes			
Antenna Gain	15dBi			18dBi			23dBi		18dBi		16dBi		16dBi			
Enclosure	IP66			IP67			IP67				IP67		IP67			
ESD Protection	8KV			15KV			15KV				15KV		15KV			
Lightning Protection	-			8KV			8KV				8KV		8KV			
Warranty	2 Years (extendable to 5 years at additional 10% cost of equipment)															

Accessories



Part Number	Description
SIL DLC 10M	Outdoor Shielded Ethernet Downlink Cable 10 Metres
SIL DLC 20M	Outdoor Shielded Ethernet Downlink Cable 20 Metres
SIL DLC 50M	Outdoor Shielded Ethernet Downlink Cable 50 Metres
SIL DLC 90M	Outdoor Shielded Ethernet Downlink Cable 90 Metres
SIL MNT 3	3 Axis magnesium alloy tilt and swivel bracket (Single) suitable for wall mounting PICO
SIL 48GPOE+	802.af/at compliant Gigabit PoE+ injector (includes UK power cable)



STREAM

STREAM YOUR WORLD

The 60GHz STREAM Range – Outdoor Wireless PTP & PtMP

Key Features

- 57-71 GHz Band, 6 Channels or 12 Channels supported
- Up to 2.5Gbps Full Duplex Aggregate Throughput
- Multipoint connectivity for up to 25 clients
- Up to 16QAM Modulation
- Over-The-Air (OTA) Security, AES+ 256 Encryption
- Supports VLANs
- High Gain Antennae with Beamforming Technology
- IP67 Rated
- Supplied with 3 axis tilt and swivel magnesium alloy bracketry
- 48v Power over Ethernet
- 2 year warranty as standard (extendable to 5 years)

60GHz Radios

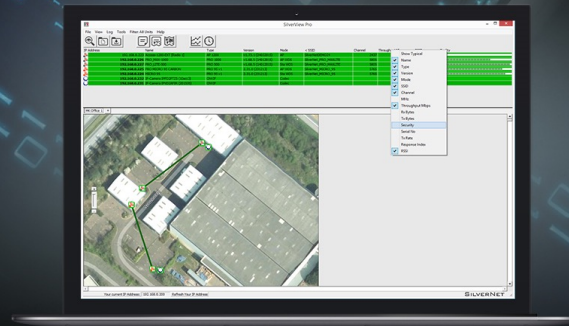


	SIL STREAM 60S	SIL STREAM 60M	SIL STREAM 60L
Frequency	57 – 71 GHz	57 – 71 GHz	57 – 71 GHz
Distance	500M	500M	2000M
Multipoint Clients	1	25	1
Available throughputs (Mbps)	2.5Gbps	2.5Gbps	2.5Gbps
Available Channels	2.5Gbps (6 x 2160MHz) 1Gbps (12 x 1080MHz)	2.5Gbps (6 x 2160MHz) 1Gbps (12 x 1080MHz)	2.5Gbps (6 x 2160MHz) 1Gbps (12 x 1080MHz)
Antenna Beamwidth	40x40	120x50	5x5
RF Output Power	40 EIRP	40 EIRP	55 EIRP
PoE	802.3af/at (48VDC)	802.3af/at (48VDC)	802.3af/at (48VDC)
Pole Mount	Yes	Yes	Yes
Wall Mount	Yes	Yes	Yes
Enclosure	IP67	IP67	IP67
Lightning Protection	8KV	8KV	8KV
Warranty	2 Years (extendable to 5 years at additional 10% cost of equipment)		

Accessories



Part Number	Description
SIL DLC 10M	Outdoor Shielded Ethernet Downlink Cable 10 Metres
SIL DLC 20M	Outdoor Shielded Ethernet Downlink Cable 20 Metres
SIL DLC 50M	Outdoor Shielded Ethernet Downlink Cable 50 Metres
SIL DLC 90M	Outdoor Shielded Ethernet Downlink Cable 90 Metres
SIL MNT 3	3 Axis magnesium alloy tilt and swivel bracket (Single) suitable for wall mounting PICO
SIL 48GPOE+	802.af/at compliant Gigabit PoE+ injector (includes UK power cable)



The Backhaul Range – Outdoor Wireless PTP

Key Features

- 24GHz equipment operates at the Unlicensed 24GHz band
- 80GHz equipment operates at the light licensed 80GHz band
- The Backhaul Range is capable of throughputs up to 10Gbps
- The equipment has Gigabit Ethernet interfaces and/or Optical ports
- Point-To-Point links to cover distances up to 5KM
- Telco grade equipment
- Rugged weatherproof IP65 and IP67 rated enclosures
- Supplied with bracketry and PoE Injectors
- Capable of 256 AES encryption*
- 2 year warranty as standard

* AES encryption is only available on the 80GHz Backhaul Range and is upgradable via license key.

Radios



	SIL U24			SIL FDD 801G		SIL FDD 802G		SIL FDD 805G		SIL FDD 810G	
Frequency	24GHz			80GHz		80GHz		80GHz		80GHz	
Antenna (cm)	30	60	90	30	60	30	60	30	60	30	60
Distance (up to)	1KM	2.5KM	5KM	2KM	5KM	2KM	5KM	2KM	5KM	2KM	5KM
Available throughputs	500Mbps			1Gbps		2Gbps		5Gbps		10Gbps	
Interfaces	2 x GE Electrical			2 x GE Electrical		2 x Optical or 1 x 2.5Gbps optical		2 x 2.5Gbps Optical		1 x 10Gbps optical	
PoE	48v POE+			PoE (Proprietary)		PoE (Proprietary)		PoE (Proprietary)		PoE (Proprietary)	
Pole Mount	Yes			Yes		Yes		Yes		Yes	
Wall Mount	No			No		No		No		No	
Encryption	-			AES 256-BIT (AES activated via license key upgrade)		AES 256-BIT (AES activated via license key upgrade)		AES 256-BIT (AES activated via license key upgrade)		AES 256-BIT (AES activated via license key upgrade)	
ODU	IP65			IP65		IP65		IP67		IP67	
Operational Temperature	-35°C to +55°C			-35°C to +55°C		-35°C to +55°C		-35°C to +55°C		-35°C to +55°C	
Warranty	2 Years										

Accessories



Part Number	Description
SIL DLC 10M	Outdoor Shielded Ethernet Downlink Cable 10 Metres
SIL DLC 20M	Outdoor Shielded Ethernet Downlink Cable 20 Metres
SIL DLC 50M	Outdoor Shielded Ethernet Downlink Cable 50 Metres
SIL DLC 90M	Outdoor Shielded Ethernet Downlink Cable 90 Metres
AES Encryption	Upgrade license to AES 128/256 BIT encryption



SILVERNET
WIRELESS NETWORK SOLUTIONS



5 years Warranty	10k bytes Packet	12~56V DC Redundant Power	-40~75 °C Operating Temp	IP-40 Enclosure	DIN rail or Wall-mounted Installation	6KV Lightning Protection
-------------------------------	-------------------------------	-------------------------------------	------------------------------------	---------------------------	---	------------------------------------

Fibre Transmission SFP Modules

Key Features

- Data rate up to 1.25Gbps with a range of up to 80KM
- Data rate up to 10.3Gbps with a range of up to 10KM
- Operating temperature Standard: 0~+70°C Industrial: -40~+85 °C
- Compliant with SFP MSA specification
- Lifetime warranty

Industrial Managed PoE Switches

Key Features

- 4, 8, 16 and 24 Port Industrial Managed Gigabit PoE Switches
- 2 & 4 Gigabit Fibre SFP slots
- IEEE803.af/at compliant
- Operating temperature (-40°C ~+75°C)
- DIN Rail or wall mountable
- IP40 Protection
- Rugged
- 5 Year warranty

Industrial Un-Managed PoE Switches

Key Features

- 4 or 8 Port Industrial Un-Managed Gigabit PoE Switches
- 2 x Gigabit Fibre SFP slots
- IEEE803.af/at compliant
- Operating temperature (-40°C ~+75°C)
- DIN Rail or wall mountable
- IP40 Protection
- Rugged
- 5 Year warranty

Switches



	SIL 73204P & SIL 73208P Unmanaged	SIL 73204MP	SIL 73208MP	SIL 73416MP	SIL 73024MP
Total Ports	6 & 10	6	10	20	24
Gigabit Ethernet	4 & 8	4	8	16	24
Gigabit Fibre	2	2 SFP	2 SFP	4 SFP	0 SFP
PoE Ports	4 & 8	4	8	16	24
Per Port Max Output	30W	30W	30W	30W	30W
Switch Bandwidth	20Gbps			56Gbps	
Switch Time Delay	<10µs			<10µs	
Power Input	9 – 56Vdc, Redundant			9 – 56Vdc, Redundant	
Power Consumption	<10W			<15W	
Enclosure	IP40 Protection, Aluminium Alloy			IP40 Protection, Aluminium Alloy	
Installation	DIN RAIL, Wall Mounted			DIN RAIL, Wall Mounted	
ESD Protection	15KV			15KV	
Standards	N/A	G.8032 (ERPS) IEEE.802.3, IEEE802.3u, IEEE802.3z, IEEE802.3x, IEEE802.3ad, IEEE802.1p, IEEE802.1x, IEEE802.3ab, IEEE802.1Q, IGMP snooping			
Warranty	5 Years			5 Years	

Accessories



Part Number	Description	Part Number	Description
SIL-SFP0-01-25-X850-0-5D	1G Multimode 850nm SFP, 550m	SIL-10G-DATAC-0.5-C	10G Direct Attach cable, SFP+, 0.5m
SIL-SFP0-01-25-X131-10XD	1G Singlemode 1310nm SFP, 10km	SIL-10G-DATAC-01-C	10G Direct Attach cable, SFP+, 1m
SIL-SFP0-01-25-X131-40XD	1G Singlemode 1310nm SFP, 40km	SIL-10G-DATAC-05-C	10G Direct Attach cable, SFP+, 5m
SIL-SFP0-01-25-X155-80XD	1G Singlemode 1550nm SFP, 80km	SIL-10G-DATAC-10-C	10G Direct Attach cable, Active SFP+, 10m
SIL-SFPX-08-10-X850-0-3D	10G Multimode 850nm SFP+, 300m		
SIL-SFPX-08-10-X131-02XD	10G Multimode 1310nm SFP+, 2km		
SIL-SFPX-08-10-X131-10XD	10G Singlemode 1310nm SFP+, 10km		
Warranty	Lifetime	Warranty	Lifetime

Rackmount Switches



	Industrial Rack Mountable			Commercial Rack Mountable	
	SIL 716E8C4M	SIL 716S8C4M	SIL 734C24MP	SIL 534C24MP	SIL 54424MP
Total Ports	28	28	32	32	28
Gigabit Ethernet	16	8	28	28	24
Gigabit Fibre	8 SFP	16 SFP	4 SFP	4 SFP	4 SFP
10 Gigabit Fibre	4 SFP	4 SFP	0	0	4 SFP
PoE Ports	0	4	24	24	24
Per Port Max Output	NA	NA	30W	30W	30W
Switch Bandwidth	128Gbps			128Gbps	
Switch Time Delay	<10µs			<10µs	
Power Consumption	<10W			<15W	
Enclosure	IP40 Protection, Aluminium Alloy			IP40 Protection, Aluminium Alloy	
PSU	48vDC (15~56VDC)			240VAC	
ESD Protection	8KV			15KV	
Standards	G.8032 (ERPS) IEEE.802.3, IEEE802.3u, IEEE802.3z, IEEE802.3x, IEEE802.3ad, IEEE802.1p, IEEE802.1x, IEEE802.3ab, IEEE802.1Q, IGMP snooping				
Warranty	5 Years				

Accessories



Part Number	Description	Part Number	Description
SIL-SFP0-01-25-X850-0-5D	1G Multimode 850nm SFP, 550m	SIL-10G-DATAC-0.5-C	10G Direct Attach cable, SFP+, 0.5m
SIL-SFP0-01-25-X131-10XD	1G Singlemode 1310nm SFP, 10km	SIL-10G-DATAC-01-C	10G Direct Attach cable, SFP+, 1m
SIL-SFP0-01-25-X131-40XD	1G Singlemode 1310nm SFP, 40km	SIL-10G-DATAC-05-C	10G Direct Attach cable, SFP+, 5m
SIL-SFP0-01-25-X155-80XD	1G Singlemode 1550nm SFP, 80km	SIL-10G-DATAC-10-C	10G Direct Attach cable, Active SFP+, 10m
SIL-SFPX-08-10-X850-0-3D	10G Multimode 850nm SFP+, 300m		
SIL-SFPX-08-10-X131-02XD	10G Multimode 1310nm SFP+, 2km		
SIL-SFPX-08-10-X131-10XD	10G Singlemode 1310nm SFP+, 10km		
Warranty	Lifetime	Warranty	Lifetime

iSITE

iSITE LITE iSITE CONNECT iSITE SWITCH

Industrial 4/5G Wireless Router



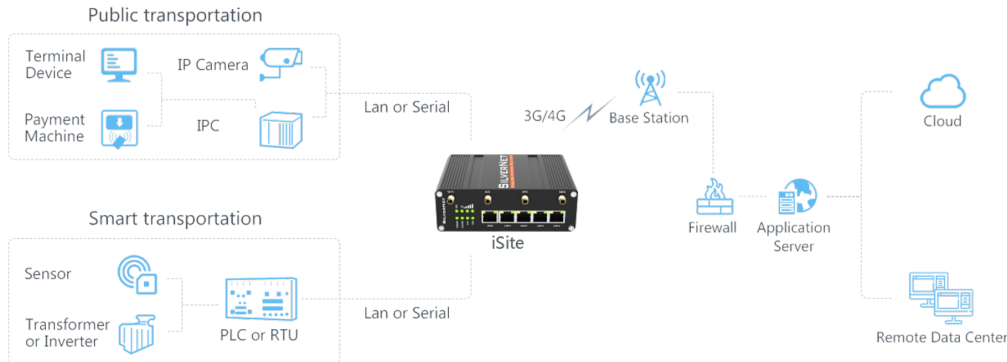
iSITE 4/5G Routers

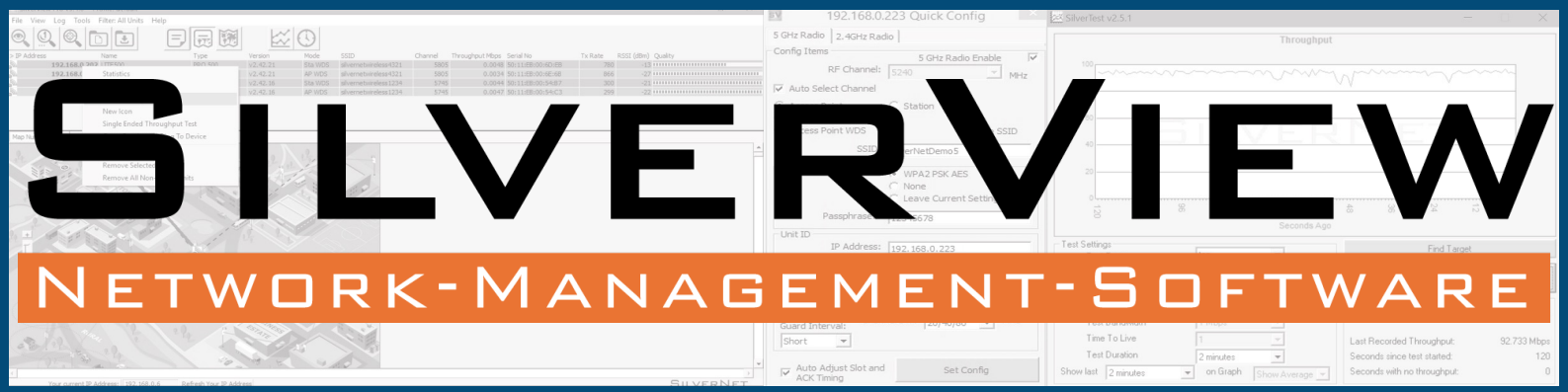
Key Features

- Industrial-grade quad-core CPU ARM Cortex-A55
- Global 4/5G (NSA/SA)/4G LTE network with dual SIM for backup between multiple carrier networks
- Flexible modular design providing Ethernet, optional I/O, Serial, Wi-Fi and GPS
- Dual Carrier Aggregation (2CC CA)
- Rugged enclosure with IP30 protection for harsh environments
- Supports up to 802.11ax
- Embedded Hardware Watchdog to automatically recover from failures
- Automatic Failover between Ethernet, Cellular and Wi-Fi
- Supports VPN Tunnels IPsec, OpenVPN, GRE, L2TP, PPTP, DMVPN
- Supports policy routing and NAT for more secure internet access
- 2 Year Warranty as Standard



	SIL iSITE Lite	SIL iSITE Connect	SIL iSITE Switch	SIL iSITE Switch 5G
Cellular Interface	1 x 50 Ω SMA (Female)	2 x 50 Ω SMA (Female)	2 x 50 Ω SMA (Female)	4 x 50 Ω SMA (Female)
SIM Slot	1 (Mini SIM-2FF)	2 (Mini SIM-2FF)	2 (Mini SIM-2FF)	2 (Mini SIM-2FF)
Ethernet Interface	1 x WAN + 1 x LAN or 2 x LAN	1 x WAN + 1 x LAN or 2 x LAN	1 x WAN + 4 x LAN	1 x WAN + 4 x LAN
Ethernet Speed	10/100Mbps	10/100Mbps	10/100Mbps	10/100/1000Mbps
Ethernet Mode	Full / Half Duplex (Auto Negotiating)	Full / Half Duplex (Auto Negotiating)	Full / Half Duplex (Auto Negotiating)	Full / Half Duplex (Auto Negotiating)
Other Interface	-	RS232 / RS485 + 3.5mm Terminal Block	RS232 / RS485 + 3.5mm Terminal Block	RS232 / RS485 + 3.5mm Terminal Block
PoE Output	-	-	4 x 802.3af/at PoE on LAN Port	4 x 802.3af/at PoE on LAN Port
Wi-Fi Mode	-	802.11b/g/n	802.11b/g/n	802.11ax
Wi-Fi Speed	-	300Mbps	300Mbps	1800Mbps
GPS Mode	-	-	Yes	Yes
Operating Temperature	-40°C to +70°C	-40°C to +70°C	-40°C to +70°C	-30°C to +60°C
Dimensions	108mm x 90mm x 26mm	108mm x 90mm x 26mm	135mm x 103mm x 45mm	135mm x 115mm x 36.4mm
Installation	Desktop or Wall	Desktop or Wall	Desktop, Wall or DIN Rail	Desktop, Wall or DIN Rail
IP Rating	IP30	IP30	IP30	IP30
Warranty	2 Year			





SILVERVIEW

NETWORK-MANAGEMENT-SOFTWARE

SilverView - Network Management Software

SilverNet's bespoke Free of charge Network Management Software for easy installation of SilverNet devices.

Key Features

- Easy to navigate and install (plug and play)
- Discover SilverNet devices (access points and stations) even off subnet
- Built in user guide
- Secure – Multiple password level protection
- Real time throughput monitoring
- Easy configuration – simply click and log in to your device
- Quick Configuration – set channel, SSID and operation mode without logging onto the radio unit
- Set IP address – set the IP address of the device without the need to log into it
- Remote helper – help is never too far away with our built in remote helper
- Statistics – Live statistic updates on all active radio devices
- Tabbed Mapping – Upload multiple maps and add your devices by a simple drag and drop action

SilverView Pro v5.4.0 - Profile: default

File View Log Tools Filter: All Units Help

IP Address	Name	Type	Version	Mode	SSID	Channel	Throughput Mbps	Serial No	Tx Rate	RSSI (dBm)	Quality
192.168.0.202	ITTF50N	PRO 50N	v2.42.21	Sta WDS	silvernetwork4321	5805	0.0048	50:11:EB:00:6D:EB	780	-13
192.168.0.203			v2.42.21	AP WDS	silvernetwork4321	5805	0.0034	50:11:EB:00:6E:68	866	-27
192.168.0.204			v2.42.16	Sta WDS	silvernetwork1234	5745	0.0044	50:11:EB:00:54:B7	300	-21
192.168.0.205			v2.42.16	AP WDS	silvernetwork1234	5745	0.0047	50:11:EB:00:54:C3	299	-22

Map Number 1 +

- Statistics
- Configure
- Quick Config
- New Icon
- Single Ended Throughput Test
- Open Continuous Ping To Device
- Reboot
- Remove Selected Unit
- Remove All Non-Active Units

SilverTest v2.5.1

Throughput

Mbps

Seconds Ago

Test Settings

Test Type: tcp

Target IP Address: 192.168.0.5

Multicast Address: 224.0.1.200

Parallel Streams: 1

Test Bandwidth: 1 Mbps

Time To Live: 1

Test Duration: 2 minutes

Show last: 2 minutes on Graph Show Average

Find Target

Start Test

Test Status: Test Complete.

Last Recorded Throughput: 92.733 Mbps

Seconds since test started: 120

Seconds with no throughput: 0

Your current IP Address: 192.168.0.6 Refresh Your IP Address

SilverView Network Management Software



SILVERNET
WIRELESS NETWORK SOLUTIONS

**Keeping you
connected**

Call us on 0800 652 1629

**SilverNet Ltd
Presley Way
Crownhill
Milton Keynes
Buckinghamshire
MK8 0ES**



**sales@silvernet.com
+44 (0) 800 6521629**



**support@silvernet.com
+44 (0) 871 2233 067**



**orders@silvernet.com
+44 (0) 800 6521629**



warranty@silvernet.com

SALES@SILVERNET.COM

ORDERS@SILVERNET.COM

SUPPORT@SILVERNET.COM