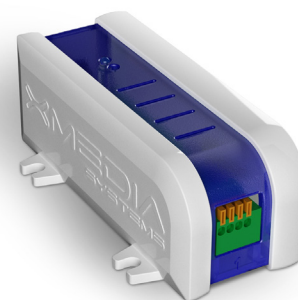


## EM-2 EXPANSION MODULE

### XM range

The nexmosphere modular range is the most versatile tool for providing unique shopper experience into your retail environment. Its scalable form factor, functionality and smart design make it an ideal controller to integrate in virtual any application. Connect any of the nexmosphere elements such as presence sensors, pick-up detectors, touch buttons or LED's to build your own unique shopper journey and optimize it based on the gathered detailed statistics insights the XM-range delivers day-to-day.



### EM series

Combine any of the EM modules to create an exact fit for your application. Whether it is the universal 8x X-talk interface, a 5 channel RGB led driver or one of the audio switching modules, all modules work seamlessly together without any need for configuration. See the EM product overview for all module details.

### Features

- RGB LED output

### Dimmable RGB LED interface

The LED output allows connecting any standard market-available RGB color LED strip to illuminate large surfaces. The output is fully dimmable and delivers a smooth fading between the different intensities and colors. Select one of the 16 million colors to match your presentation's color palette. The 12V power input also provides power for the connected XM-controller, eliminating the 5V power supply.

- Red/green/blue color control
- 12V DC max 1A
- Dimmable LED output (PWM/256 steps)
- Built-in power supply to power XM-Module and other EM-modules
- Reverse polarity protection LED output
- Wiring size AWG 20-26, solid/stranded copper
- Wire strip length: 10mm

### EM expansion

Combine any of the EM modules to create an exact fit for your application.

- Compatible with any of the EM-modules
- Connect up to 5 EM-modules to one XM-controller
- Pre assembled factory build for your application
- Auto system configuration
- All EM-modules can be centrally controlled by XM-controller

### Benefits

- Auto start-up and configuration for highly reliable standalone applications (24/7 operability)
- Combine any of the EM and XM modules to make an exact fit for your application



# EM-2 EXPANSION MODULE

### Thermal specifications

Operating temperature: +10°C...+40°C/ +50°F ... +104°F  
Storage temperature: -20°C...+50°C/ -4°F ... +122°F  
Cooling: Passive cooling (no moving parts)

### Electrical specifications

Operating voltage: 12VDC  
Power consumption: 2A  
Overload protection: Yes  
Reverse polarity protection: Yes

No more than 2 power supplies may be connected to an assembled Xperience Controller (XM + EM modules)

### Standards and Certifications

Compliant with IEC 60950-1(ed.2);am1;am2  
CE certificate  
US/CAN certification in progress  
RoHS compliant

### Miscellaneous

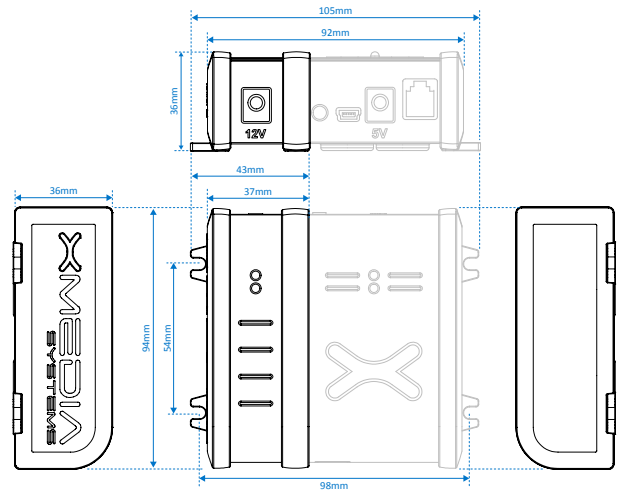
- Robust housing with screw brackets for secure fixing
- Build-in magnets for easy mounting on metal surfaces
- Both horizontal & vertical mounting allowed
- Diagnostic LED indicating potential issues
- Status LED indicating power & input/output operations
- 1 year warranty (optional 3 year extended warranty available)

### Packaging

Netto Weight: 100g  
Items per carton 1 or 10 pcs (preassembled on XM Xperience controller)

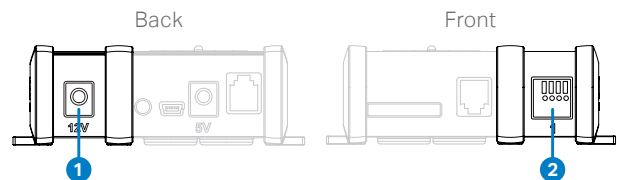
### Mechanical dimensions

LxWxH: 94 x 43 x 36 mm / 94 x 105 x 36 mm  
Screw fixation: 54 x 98 mm



### Hardware interfaces

1. 12V Power input 2.1mm DC socket
2. 4p wire-to board terminal for connecting RGB LED output



### Ordering information

Product ID	Description	Quantity
EM-2	Expansion module, 1 channel RGB LED driver	1 pc

### Nexmosphere

High Tech Campus 10 (Mμ building)  
5656 AE Eindhoven • The Netherlands

T +31 40 240 7070  
E sales@nexmosphere.com

© 2017 Nexmosphere. All rights reserved. v1.1 / 08-17  
All content contained herein is subject to change without prior notice.