

EM-8 EXPANSION MODULE

XM range

The Nexmosphere XM range offers Xperience Controllers in a configurable and extendable form factor making it ideal to use when functionality combinations that aren't available in the smaller ranges are required. This series consists of XM controllers and EM extension units, which are mounted together at our production facilities in order to offer you just the right functionality set for your project.

Extension modules

The EM modules define the exact specification of the complete XM Xperience controller. Combine any of the modules into one system to make it fit the exact application needs. Different functionalities such as LED control, audio switching or large numbers of Element connections through X-talk channels can all be combined on a single XM controller. The EM modules are pre-assembled onto the XM controllers at our production facilities.



Features

- 8x X-talk interface for easy sensor connection

X-talk interface

Connect a wide range of sensors, buttons, LEDs, or any other of the Nexmosphere Elements to create your unique shopper experience. Due to auto-configuration, no additional setup is required for seamless operation.

- Plug and smile interface
- Compatible with any of the Nexmosphere Elements
- Providing power to the connected Elements for easy system wiring

EM expansion

The EM modules define the exact specification of the complete XM Xperience controller. Combine any of the modules into one system to make it fit the exact application needs. Different functionalities such as LED control, audio switching or large numbers of Element connections through X-talk channels can all be combined on a single XM controller. The EM modules are pre-assembled onto the XM controllers at our production facilities

- Compatible with any of the EM- modules
- Connect up to 5 EM-modules to one XM-controller
- Pre-assembled factory build for your application

Benefits

- Auto start-up and configuration for highly reliable standalone applications (24/7 operability)
- Combine any of the EM and XM modules to make an exact fit for your application



EM-8 EXPANSION MODULE

Thermal specifications

Operating temperature: +10°C...+40°C / +50°F ... +104°F
Storage temperature: -20°C...+50°C / -4°F ... +122°F
Cooling: Passive cooling (no moving parts)

Electrical specifications

Operating voltage: 5VDC
powered internally via XM/EM
Max. system current: 2.0A
Power consumption: 0.2A
Max. output per X-talk interface: 500mA @5V

Standards and Certifications



Miscellaneous

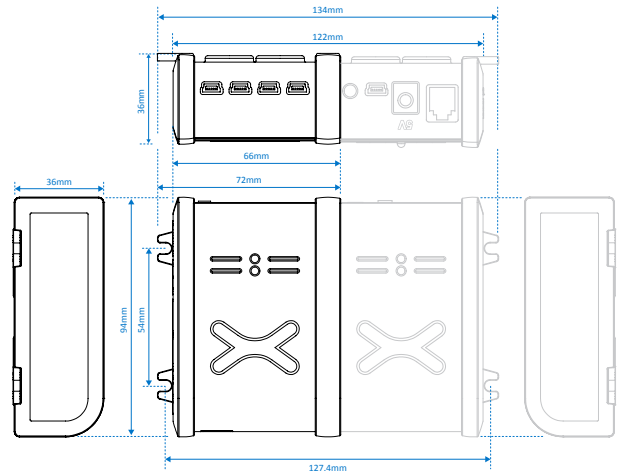
- Robust housing with screw brackets for secure fixing
- Built-in magnets for easy mounting on metal surfaces
- Both horizontal and vertical mounting allowed
- Power LED
- 1-year warranty (optional 3-year extended warranty available)

Packaging

Netto weight: 72g
Items per carton 1 or 10 pcs
(preassembled on XM controller)

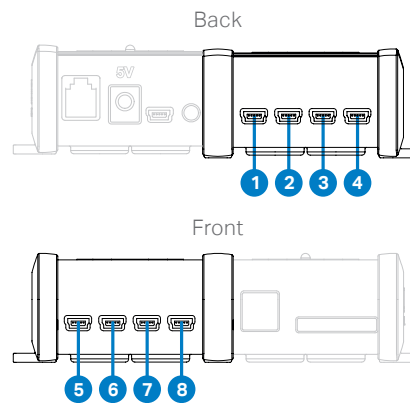
Mechanical dimensions

LxWxH: 94 x 72 x 36 mm / 94 x 134 x 36 mm
Screw fixation: 54 x 127,4 mm



Hardware interfaces

1. X-talk interface, address 1
2. X-talk interface, address 2
3. X-talk interface, address 3
4. X-talk interface, address 4
5. X-talk interface, address 5
6. X-talk interface, address 6
7. X-talk interface, address 7
8. X-talk interface, address 8



Ordering information

Product ID	Description	Quantity
EM-8	Expansion module, 8 channel X-talk interface	1 pc

Nexmosphere

High Tech Campus 10 (M μ building) T +31 40 240 7070
5656 AE Eindhoven • The Netherlands E sales@nexmosphere.com

© 2017-2020 Nexmosphere. All rights reserved. v2.0 / 02-20
All content contained herein is subject to change without prior notice.