

CoCon Interpretation



Description

CoCon is a software suite for conference management & assistance, that opens up a host of options and configuration setting to control every aspect of the meeting experience.

CoCon is connected to a central conference unit that controls a number of microphones and other conference equipment. The software interacts with the central conference unit to enable various functionalities and views on the conference. That is why CoCon is conceived as a client-server framework.

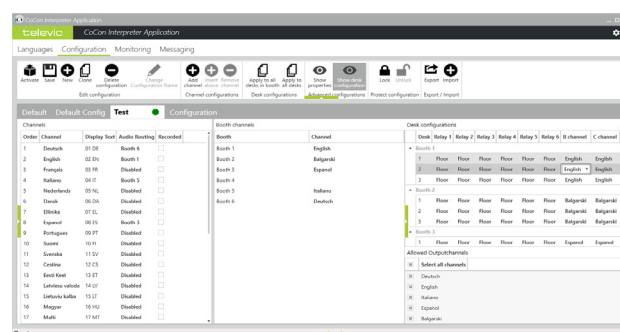
The CoCon Discussion Module serves as the base of the suite and is needed to run other plugin modules.

CoCon Interpretation [Client-side]

CoCon Interpretation allows you to configure the language channels in the Plexus system, used for simultaneous interpretation.

The Interpretation module is designed to work with Televic's Lingua Interpreter Desk (71.98.2900 & 71.98.2901)

It permits you to configure the Lingua Interpreter Desk settings. It also allows you to select the channels and modify the display text on channel selectors, as well as choose audio routing for each channel, external audio routing, a specific booth or even a disabled channel. Additionally, relays and B/C channels can be defined. Finally, all booth activity can be monitored from the CoCon Interpretation module.



Features

- » Fine-grained control over each Televic Interpreter Desk
- » Open, save and load different presets and configurations for easy and quick access
- » Import and export settings
- » Rapid channel configuration
- » Comprehensive language management (all ISO 639-1 codes included for swift access)
- » Simple audio routing (disable channels, select booth numbers, route audio externally)

System Requirements

Hardware Requirements

Room Server:

- » Processor: Intel i5-10500E 3.1 GHz / i7 processor
- » RAM: minimum 8 GB is required as the PC contains many other apps and programs; If the room contains more than 200 units, 16 GB RAM is required for the Room Server PC
- » Free disk space: minimum 10 GB
- » Network connectivity: at least 100 MB/s

Client Applications:

- » Processor: Intel® i3 2 GHz or higher
- » RAM: Minimum 4 GB
- » Recommended graphical hardware supporting DirectX 9.0 or better
- » Free disk space: Minimum 10 GB
- » Network connectivity: at least 100 MB/s

Note: When running multiple client applications on the same PC, at least 2 GB per client is required.

Network requirements for Central Units connecting over TCP/IP:

- » Available bandwidth of at least 100 Mb/s for each CoCon Room Server/Central Unit connection
- » Available bandwidth of at least 100 Mb/s for each CoCon Room Server/Client connection

Switch requirements:

- » Bandwidth (switching capacity): at least 16 Gbp
- » Packet buffer RAM: 512 KBytes per device
- » Filtering address table: 8K MAC addresses per device

Software Requirements:

- » Windows 10 Pro or Windows 11 Pro (en-US) installed with English international language

Each PC installed with a CoCon component (any server or client application) requires the .Net Framework 4.6.2. This will be installed automatically when CoCon is being installed.