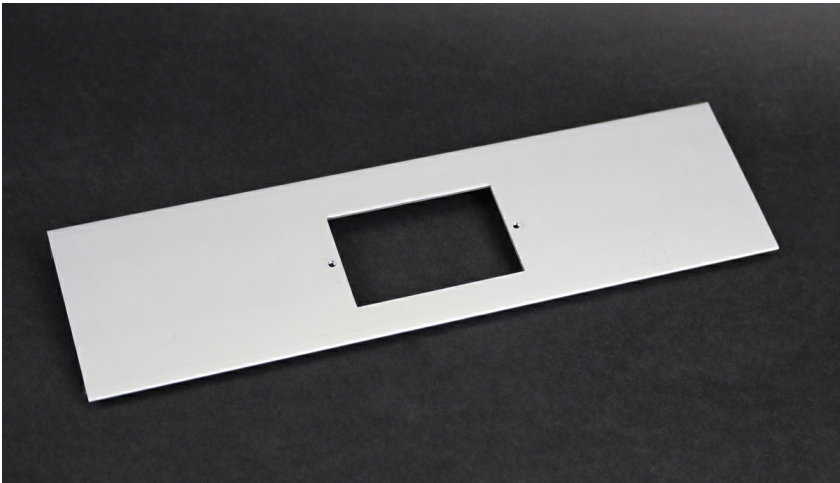




Wiremold  
ALA3800 Cover Plate with 1 3/4 x 2 15/16 Opening  
Part No. ALA-SG



Installs communication connectivity devices utilizing industry standard single-gang faceplates. Hole cut is 1 3/4" x 2 15/16" (44mm x 75mm). Faceplates must be ordered seperately.

Features & Benefits

Installs communication connectivity devices utilizing industry standard single-gang faceplates. Hole cut is 1 3/4" x 2 15/16" (44mm x 75mm). Faceplates must be ordered seperately.

Specifications

General Info

Product Line	Wiremold	UPC Number	786776524659
Country Of Origin	Mexico	Application Sector	Commercial
Standard	cULus Listed Raceway: File E4376 Guide RJBT. Fittings: File E41751 Guide RJPR. Raceway & Fittings: Meets Article 386 of NEC. Multioutlet Assemblies: Meets Article 380 of NEC.	Type	Raceway

Dimensions

Product Width US	3.0 in	Product Length US	12.0 in
------------------	--------	-------------------	---------

Listing Agencies / 3rd Party Agencies

cULus ListingNumber	E41751	cULus Listed	Yes
---------------------	--------	--------------	-----

Buy American Act Compliance

NAFTA	Yes
-------	-----

---

Additional Information

---

RoHS Conformant	Yes	Product Environmental Profile	Yes
-----------------	-----	-------------------------------	-----

---

Technical Information

---

Voltage	600.0 V
---------	---------

---