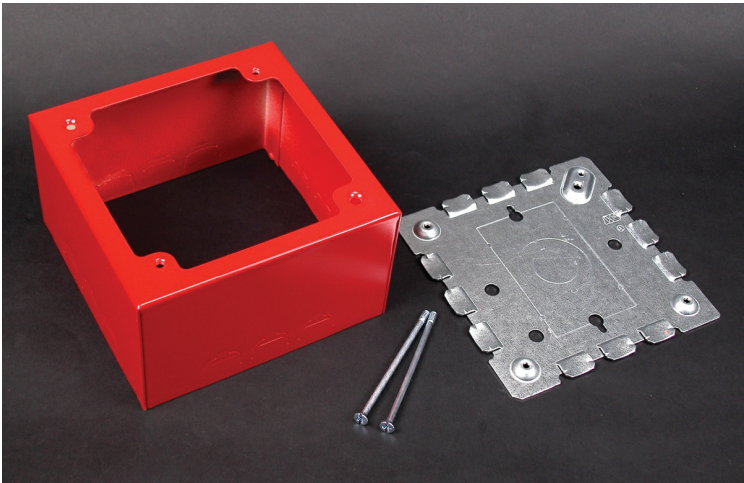




Wiremold  
500/700 Extra Deep Alarm Device Box Fitting  
Part No. R5753



For surface mounting of alarm devices and safety signals designed to fit into 4" (102mm) square back boxes. Available in red and ivory finishes. Cover is 2 3/4" (70mm) deep and has three twistouts for raceways on each side. Base has 1/2" and 1" concentric and single-gang box KOs. Accepts NEMA double-gang standard faceplates.

Features & Benefits

For surface mounting of alarm devices and safety signals designed to fit into 4" (102mm) square back boxes. Available in red and ivory finishes. Cover is 2 3/4" (70mm) deep and has three twistouts for raceways on each side. Base has 1/2" and 1" concentric and single-gang box KOs. Accepts NEMA double-gang standard faceplates.

Specifications

General Info

Product Line	Wiremold	UPC Number	786776039733
Country Of Origin	United States	Application Sector	Residential/Commercial
Standard	cULus Listed Raceway: File E4376 Guide RJBT. Fittings: File E4751 Guide RJPR. Meets Article 386 of NEC. Meets Section 12-1600 of CEC.	Type	Raceway

Dimensions

Product Width US	4.688 in	Product Depth US	2.75 in
Product Length US	4.688 in		

Buy American Act Compliance

NAFTA	Yes
-------	-----

Additional Information

---

RoHS Conformant      Yes

Product Environmental Profile      Yes

---

Technical Information

---

Voltage                      600.0 V

---