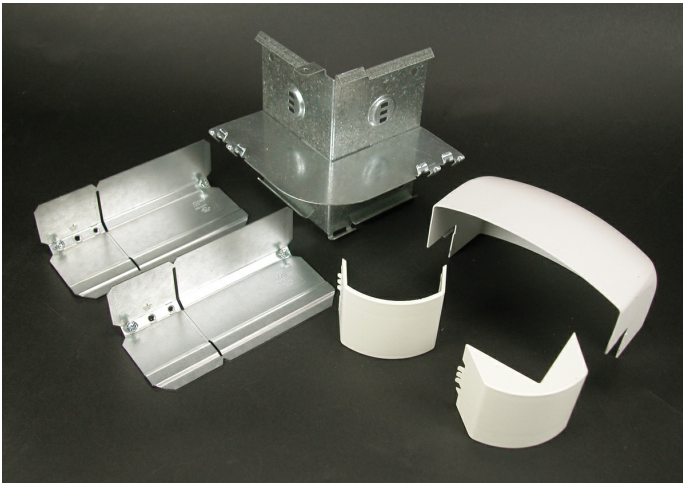




Wiremold  
Discontinued - DS4000 External Elbow Fitting  
Part No. DS4018-DG



90 degree full capacity divided external elbow that provides a 2'' (51mm) cable bend radius for fiber optic/UTP/STP installations. One pair of DS4001 Couplings included.

## Features & Benefits

90 degree full capacity divided external elbow that provides a 2'' (51mm) cable bend radius for fiber optic/UTP/STP installations. One pair of DS4001 Couplings included.

## Specifications

### General Info

|                   |                                                                                                                                                           |                    |              |
|-------------------|-----------------------------------------------------------------------------------------------------------------------------------------------------------|--------------------|--------------|
| Product Line      | Wiremold                                                                                                                                                  | UPC Number         | 786776081787 |
| Country Of Origin | United States                                                                                                                                             | Application Sector | Commercial   |
| Standard          | cULus Listed Raceway: File E4376 Guide RJBT. Fittings: File E41751 Guide RJPR. Base & Blank Cover: Meets Article 386 of NEC. Meets Section 12-600 of CEC. | Type               | Raceway      |

### Listing Agencies / 3rd Party Agencies

|                     |        |              |     |
|---------------------|--------|--------------|-----|
| cULus ListingNumber | E41751 | cULus Listed | Yes |
|---------------------|--------|--------------|-----|

### Buy American Act Compliance

|       |     |
|-------|-----|
| NAFTA | Yes |
|-------|-----|

### Additional Information

|                 |     |
|-----------------|-----|
| RoHS Conformant | Yes |
|-----------------|-----|

---

## Technical Information

---

|         |         |
|---------|---------|
| Voltage | 600.0 V |
|---------|---------|

---