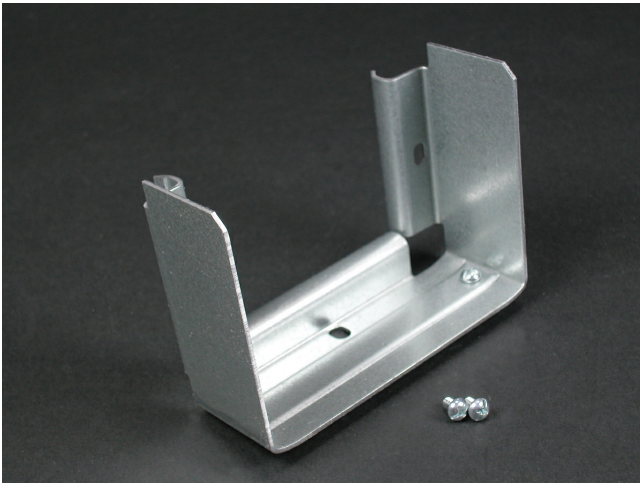




Wiremold  
6000 Converter Coupling Fitting  
Part No. G6001TX



Use this coupling to convert G6011TX or G6017TX into tee or cross. For tee, one required, for cross, two required.

Features & Benefits

Use this coupling to convert G6011TX or G6017TX into tee or cross. For tee, one required, for cross, two required.

Specifications

General Info

Product Line	Wiremold	UPC Number	786776088069
Country Of Origin	United States	Application Sector	Commercial
Standard	cULus Listed Raceway: File E4376 Guide RJBT. Fittings: File E41751 Guide RJPR. Base & Blank Cover: Meets Article 386 of NEC. Meets Section 12-600 of CEC.	Type	Raceway

Dimensions

Product Depth US	3.0 in
------------------	--------

Listing Agencies / 3rd Party Agencies

cULus ListingNumber	E41751	cULus Listed	Yes
---------------------	--------	--------------	-----

Buy American Act Compliance

NAFTA	Yes
-------	-----

Additional Information

RoHS Conformant	Yes	Product Environmental Profile	Yes
-----------------	-----	-------------------------------	-----

Technical Information

Voltage	600 V
---------	-------