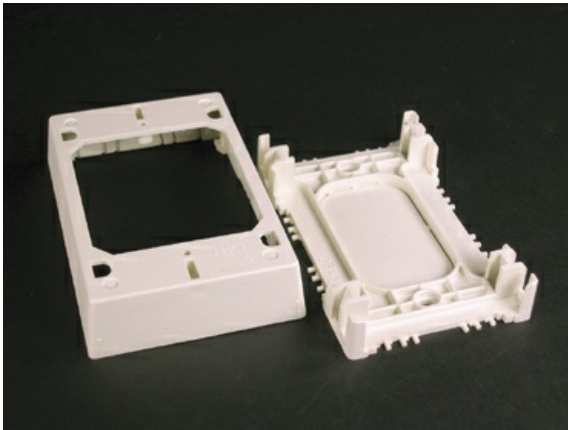




Wiremold
Wiremold 400/800/2300/2300D Series Shallow Device/Extension Box Fitting, White
Part No. 2348S/51-WH



Wiremold 400/800/2300/2300D Series Shallow Device/Extension Box is for installing standard switches and receptacles. Base has rectangular KO.

Features & Benefits

This product meets the material restrictions of RoHS

Specifications

General Info

Product Line	Wiremold	Color	White
UPC Number	786776523607	Country Of Origin	United States
Application Sector	Commercial	Standard	cULus Listed Surface Nonmetallic Raceway Fitting: File E90377 Guide RJYT/RJYT7
Type	Raceway		

Dimensions

Product Width US	4.88 in	Product Weight US	0.17 lb
Product Volume US	17.92 cu in	Product Depth US	1.13 in
Product Height US	3.25 in		

Listing Agencies / 3rd Party Agencies

cULus ListingNumber	E90377	cULus Listed	Yes
---------------------	--------	--------------	-----

Buy American Act Compliance

NAFTA	Yes
-------	-----

Additional Information

RoHS Conformant	Yes	Product Environmental Profile	Yes
-----------------	-----	-------------------------------	-----

Technical Information

Voltage	600.0 V
---------	---------
