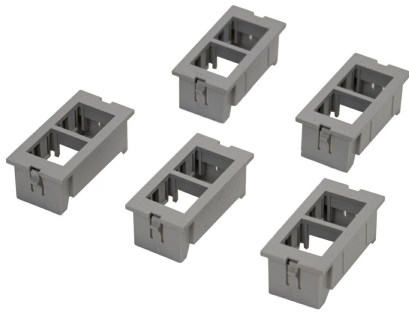




Wiremold
CM 2A Dual Flushmount Nordx/Cdt Unloaded Module
Part No. CM2-U2NOR-GY



Dual, flushmount NordX/CDT unloaded module. Accepts MDVOFlex jacks and fiber modules.

Features & Benefits

Dual, flushmount NordX/CDT unloaded module. Accepts MDVOFlex jacks and fiber modules.

Specifications

General Info

Product Line	Wiremold	UPC Number	786776018561
Country Of Origin	United States		

Dimensions

Product Width US	0.935 in	Product Depth US	0.695 in
Product Length US	1.91 in		

Listing Agencies / 3rd Party Agencies

cULus ListingNumber	E145222	cULus Listed	Yes
---------------------	---------	--------------	-----

Buy American Act Compliance

NAFTA	Yes
-------	-----

Additional Information

RoHS Conformant

Yes
