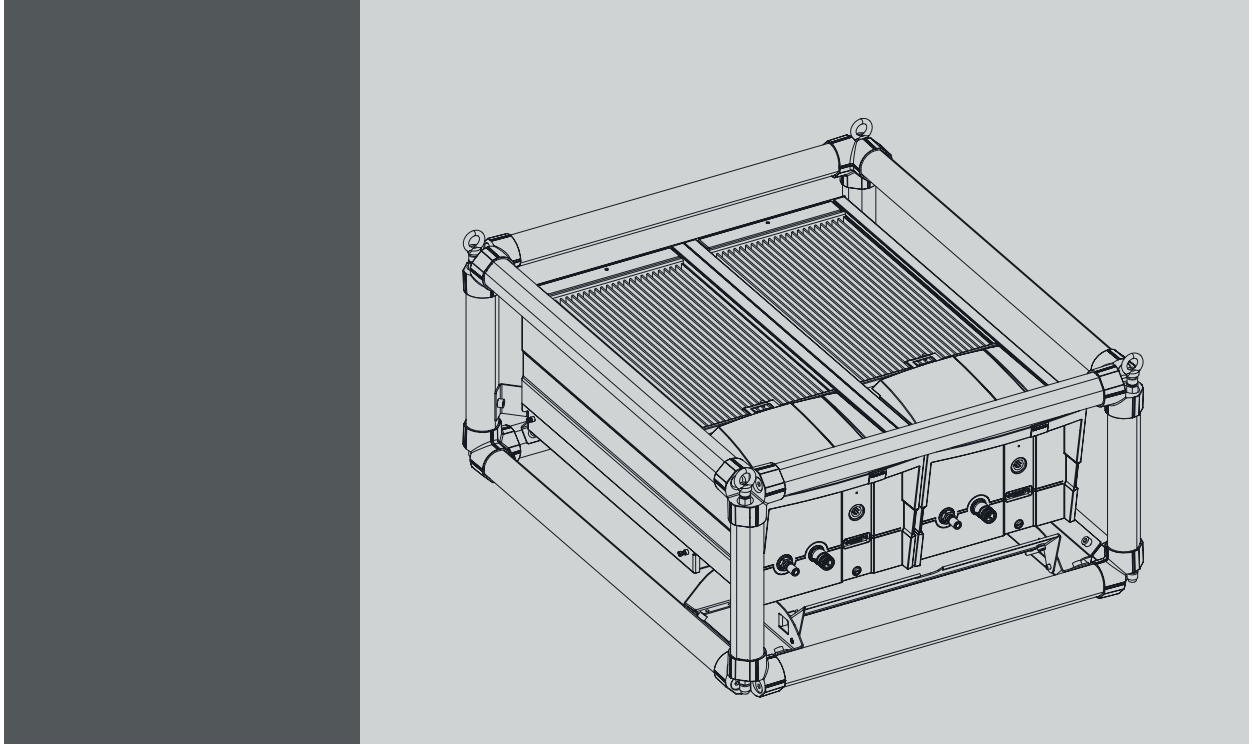


Cooler rigging frame



Installation manual
For HDF WLP series

R9801646

Barco NV

Beneluxpark 21, 8500 Kortrijk, Belgium

Phone: +32 56.23.32.11

Fax: +32 56.26.22.62

Support: www.barco.com/en/support

Visit us at the web: www.barco.com

Registered address: Barco NV

President Kennedypark 35, 8500 Kortrijk, Belgium

Phone: +32 56.23.32.11

Fax: +32 56.26.22.62

Support: www.barco.com/en/support

Visit us at the web: www.barco.com

Changes

Barco provides this manual 'as is' without warranty of any kind, either expressed or implied, including but not limited to the implied warranties or merchantability and fitness for a particular purpose. Barco may make improvements and/or changes to the product(s) and/or the program(s) described in this publication at any time without notice.

This publication could contain technical inaccuracies or typographical errors. Changes are periodically made to the information in this publication; these changes are incorporated in new editions of this publication.

The latest edition of Barco manuals can be downloaded from the Barco web site www.barco.com or from the secured Barco web site <https://www.barco.com/en/signin>.

Copyright ©

All rights reserved. No part of this document may be copied, reproduced or translated. It shall not otherwise be recorded, transmitted or stored in a retrieval system without the prior written consent of Barco.

Disposal Information

Waste Electrical and Electronic Equipment



■ This symbol on the product indicates that, under the European Directive 2012/19/EU governing waste from electrical and electronic equipment, this product must not be disposed of with other municipal waste. Please dispose of your waste equipment by handing it over to a designated collection point for the recycling of waste electrical and electronic equipment. To prevent possible harm to the environment or human health from uncontrolled waste disposal, please separate these items from other types of waste and recycle them responsibly to promote the sustainable reuse of material resources.

For more information about recycling of this product, please contact your local city office or your municipal waste disposal service.

For details, please visit the Barco website at: <http://www.barco.com/en/AboutBarco/weee>

Guarantee and Compensation

Barco provides a guarantee relating to perfect manufacturing as part of the legally stipulated terms of guarantee. On receipt, the purchaser must immediately inspect all delivered goods for damage incurred during transport, as well as for material and manufacturing faults Barco must be informed immediately in writing of any complaints.

The period of guarantee begins on the date of transfer of risks, in the case of special systems and software on the date of commissioning, at latest 30 days after the transfer of risks. In the event of justified notice of complaint, Barco can repair the fault or provide a replacement at its own discretion within an appropriate period. If this measure proves to be impossible or unsuccessful, the purchaser can demand a reduction in the purchase price or cancellation of the contract. All other claims, in particular those relating to compensation for direct or indirect damage, and also damage attributed to the operation of software as well as to other services provided by Barco, being a component of the system or independent service, will be deemed invalid provided the damage is not proven to be attributed to the absence of properties guaranteed in writing or due to the intent or gross negligence or part of Barco.

If the purchaser or a third party carries out modifications or repairs on goods delivered by Barco, or if the goods are handled incorrectly, in particular if the systems are operated incorrectly or if, after the transfer of risks, the goods are subject to influences not agreed upon in the contract, all guarantee claims of the purchaser will be rendered invalid. Not included in the guarantee coverage are system failures which are attributed to programs or special electronic circuitry provided by the purchaser, e.g. interfaces. Normal wear as well as normal maintenance are not subject to the guarantee provided by Barco either.

The environmental conditions as well as the servicing and maintenance regulations specified in this manual must be complied with by the customer.

Trademarks

Brand and product names mentioned in this manual may be trademarks, registered trademarks or copyrights of their respective holders. All brand and product names mentioned in this manual serve as comments or examples and are not to be understood as advertising for the products or their manufacturers.

1. COOLER RIGGING FRAME

1.1 Safety

About this chapter

Read this chapter attentively. It contains important information to prevent damage to the rigging frame. Ensure that you understand and follow all safety instructions mentioned in this chapter before installing the rigging frame. After this chapter, additional "warnings" and "cautions" are given depending on the installation procedure. Read and follow these "warnings" and "cautions" as well.

Installation personnel

This assembly of the frame and installation of the cooler must be performed by authorized and qualified technical personnel only.

Single assembly only

You can only assemble the rigging frame one single time. While you can remove and install other coolers into the frame. It is not allowed to disassemble the rigging frame itself.

Expiry date provided adhesive

Make sure to check the expiry date of the adhesive, provided with the rigging frame. Make sure the adhesive (high strength thread-locker) is not expired.

If expired, makes sure to get new adhesive of similar or higher strength than the one provided in the kit.

Securing all screws and stacking pins

Make sure that the thread of the screws are provided with the necessary amount of adhesive.



CAUTION: Make sure that all the screws are sufficiently tightened. Respect the torque required to tighten all screws.

Forgetting or neglecting to do this may result in an unsafe rigging frame.

Transportation of the frame

Never transport the multifunctional frame in portrait position with the coolers mounted. Failure to do so can cause damage the multifunctional frame.

1.2 Introduction

Functionality

The rigging frame can be used to suspend the coolers from a truss.

Content of the kit

Content	Pieces	Indication
Top frame	1	F1
Bottom frame	1	F2
Vertical profile A	2	V1
Vertical profile B	2	V2
Rigging screws	8	R
Bracket front	1	P1
Bracket left	1	P3
Bracket right	1	P4
Safety plate	1	P2
Screw D912 M8 x 16	12	S

1. Cooler rigging frame

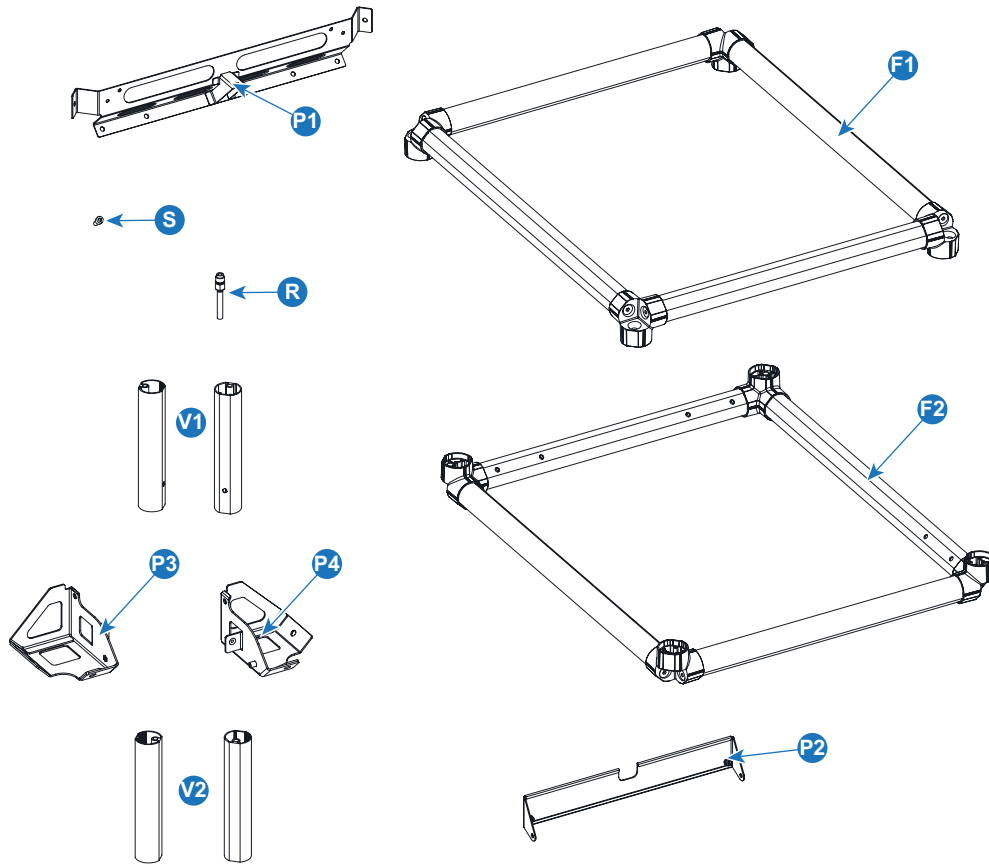


Image 1-1

Necessary tools

- Torque Wrench with **large** 17 mm hex socket
- Allen wrench 6 mm



The large 17 mm hex socket is not a common type of socket. Make sure you have this at your disposal before assembling the frame.

1.3 Assembling the frame

Necessary tools

- Torque wrench with large 17 mm hex socket
- Allen wrench 6 mm
- High strength threadlocker (e.g. Loctite 262)

How to assemble

1. Assemble the vertical frames (V1 & V2) onto the bottom frame (F2) as illustrated. Use the rigging screws (R) to tighten them together.

Vertical frames V1 have a fixation hole on one side (1). These vertical frames must be mounted on the bottom frame on the side where the frame has 2 fixation holes on each side (2).

Caution: Use high strength threadlocker on the rigging screws thread. Tighten the rigging screws with a torque of 40 Nm.

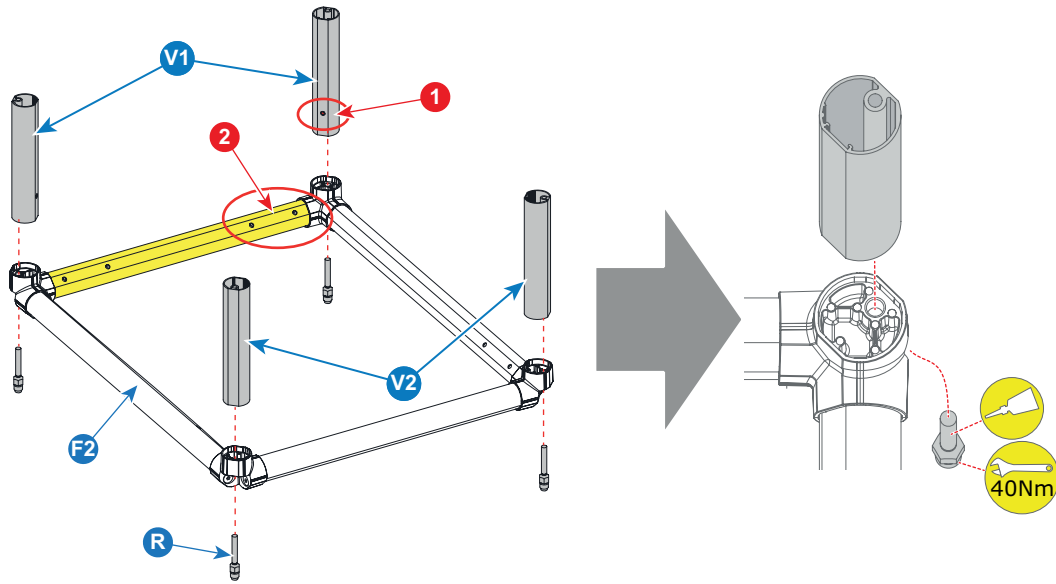


Image 1-2

- Place the top frame (F1) onto the rest of the rigging frame. Use the rigging screws (R) to tighten them together.
Caution: Use high strength threadlocker on the rigging screws thread. Tighten the rigging screws with a torque of 40 Nm.

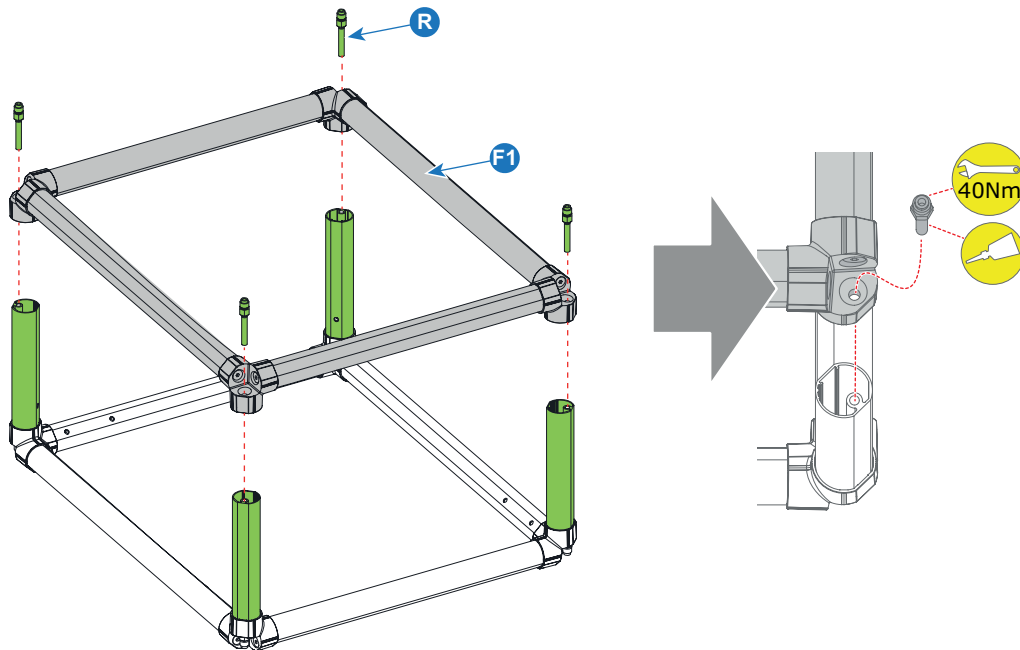


Image 1-3

- Attach the front plate (P1) to the rigging frame on the side hole in the vertical frame and the mounting holes in the bottom frame as indicated on image 1-4.
 Turn in the six fixation screws indicated with 1 and 2

1. Cooler rigging frame

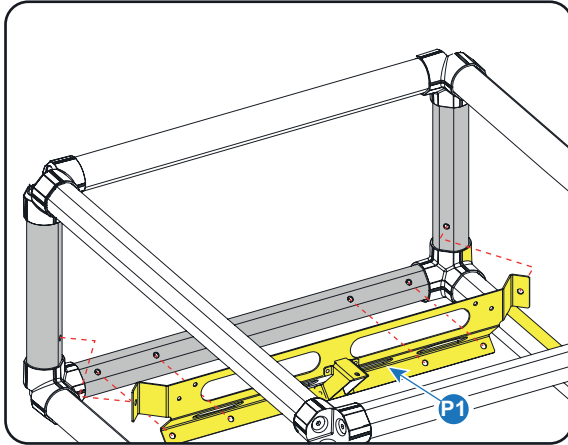


Image 1-4

4. Insert security plate P2 between the 2 brackets P3 and P4.
Secure both captive screws (1).

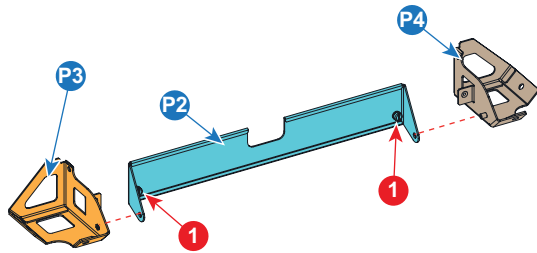
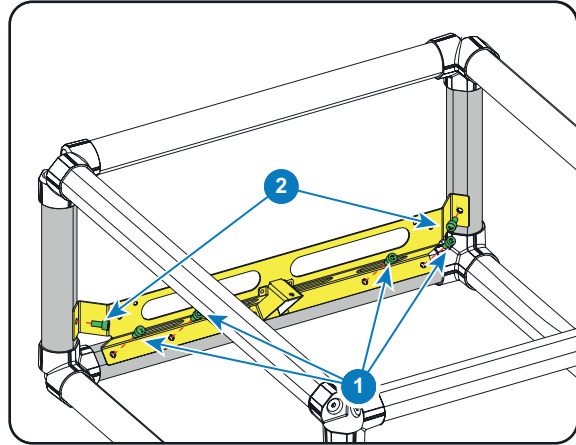
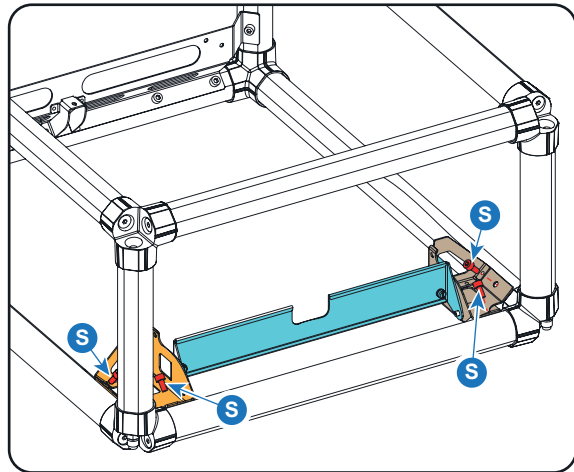


Image 1-5

5. Mount the assembly onto the rigging frame assembly.
On each side, drive in the 2 fixation screws (S).



1.4 Mounting the cooler



We start with a pre-mounted cooler housing. If the housing is not yet mounted, see projector's installation manual for more information.

Necessary parts

Fully mounted cooler housing

How to mount

1. Place the complete cooler housing into the rigging frame as indicated on the next drawing. 3 seats are foreseen.

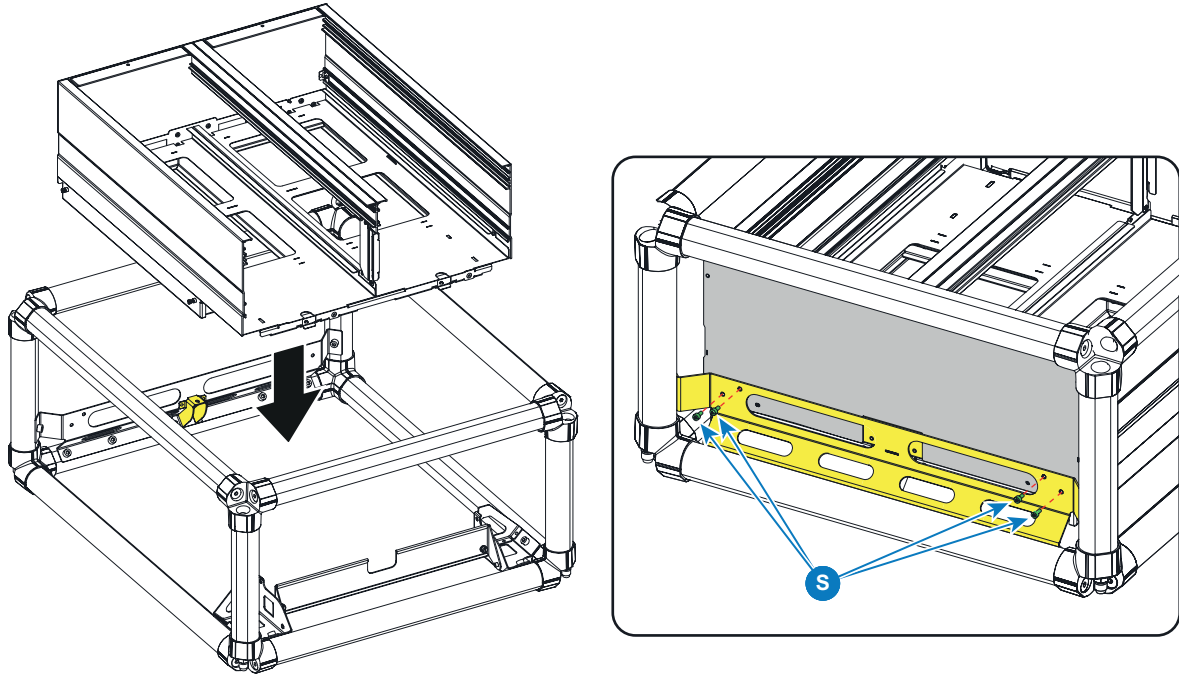


Image 1-6

2. Push the cooling housing against the front plate (P1). Drive in the 4 fixation screws (S).
3. On each side, drive in 1 fixation screws (S). Turn the assembly on its side and turn in the bottom fixation screw (S). Turn the assembly back.

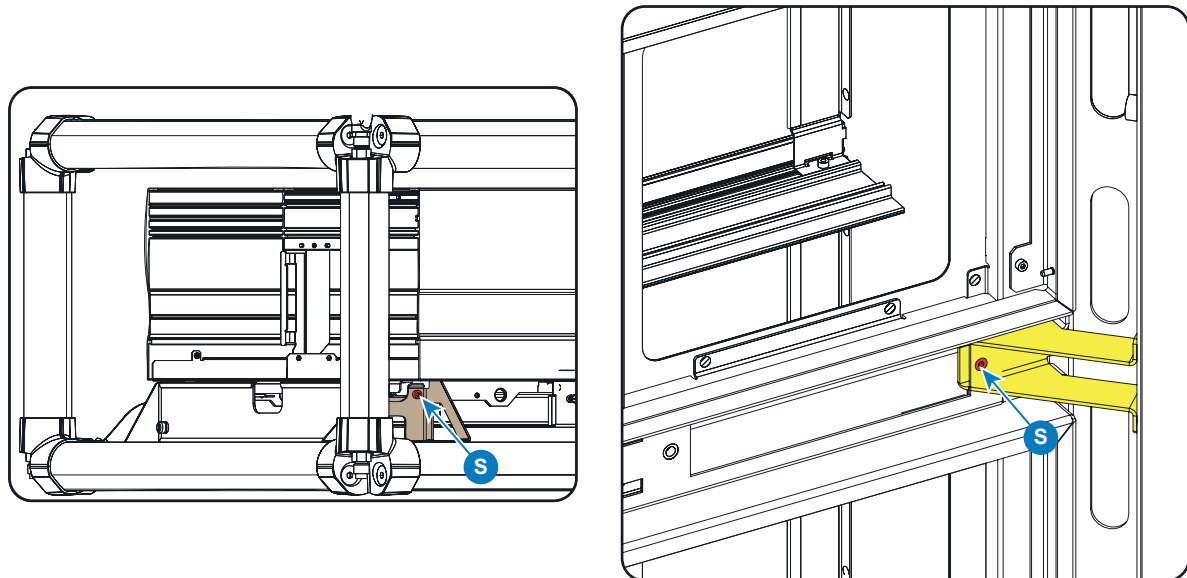


Image 1-7

4. Loosen both captive screws (C) and rotate the security plate forward.

1. Cooler rigging frame

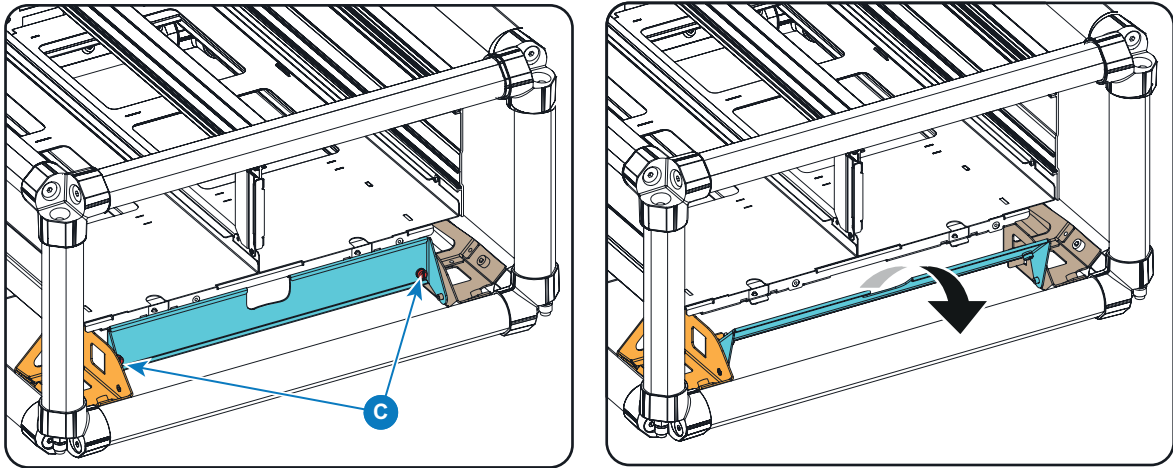


Image 1-8

5. Insert the both coolers, close both captive screw securing both coolers in the cooler housing.
Pivot the security plate back and close both captive screws.

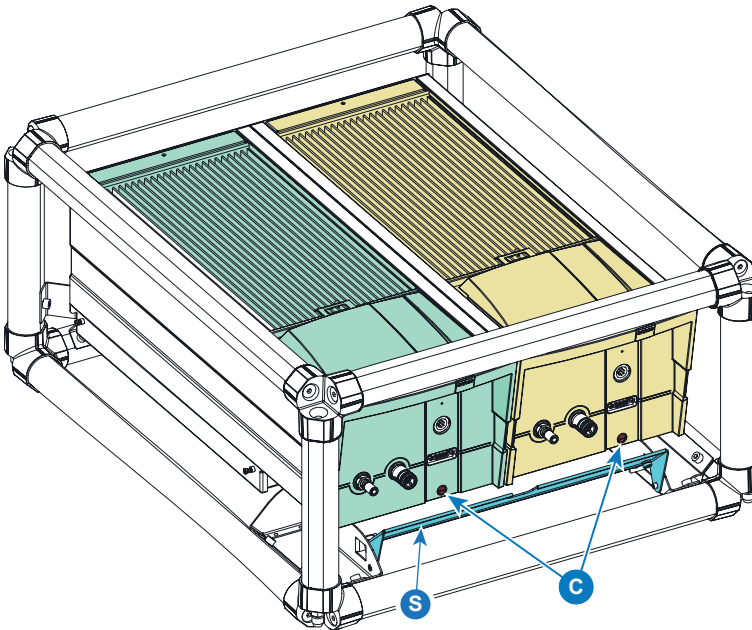


Image 1-9

Warning: Always close and fixate the security plate!

1.5 Allowed rigging configuration

Overview

The following illustrated rigging positions are allowed. Use the gray colored bars to mount the rigging clamps.

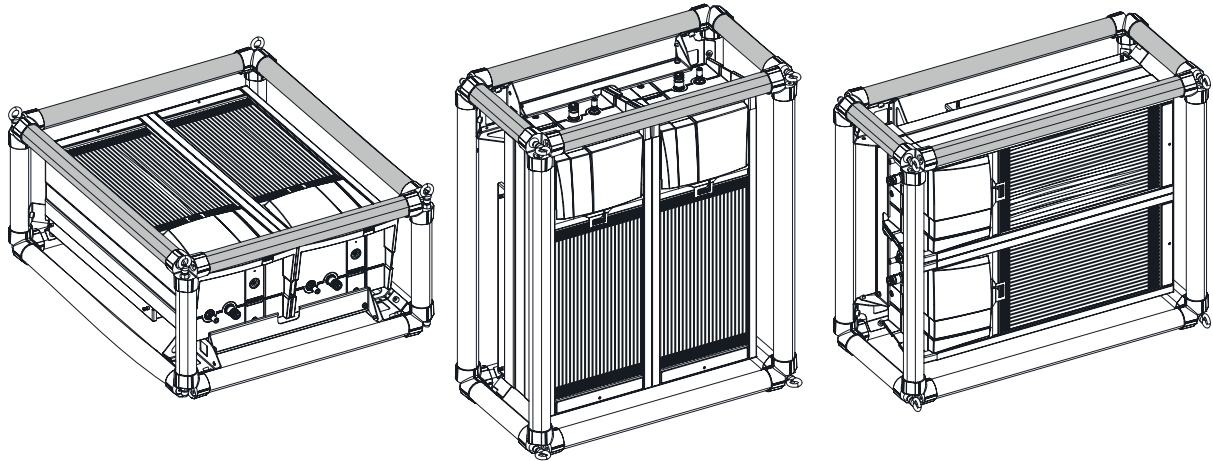


Image 1-10

1.6 Suspending the coolers from a truss



WARNING: It is the responsibility of the installer to suspend the rigging frames in a safe and secure fashion. Safety cables must be applied according to local regulations and standards. Safety cables must be dimensioned for the applicable load and no drop distance is allowed or must be limited as much as possible.

About suspending the coolers from a truss

The coolers can be suspended from a truss using the rigging frame for coolers.

Take the following things into account:

- If suspension clamps are used, they can be placed on any of the round profiles of the frame. The number of clamps required depends on the types of clamps used. Always make sure you use at least 4 clamps: 2 clamps at 2 opposed sides of the frame. Make sure to take into account the total weight of frame and coolers suspended from the truss.

How to sup

1. Measure the distance between the two used support bars of the truss, using the center tube as reference.

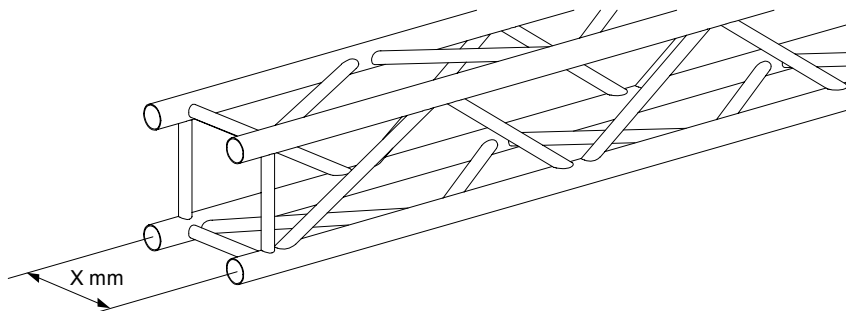


Image 1-11
Example of truss

2. Install the rigging clamps according the measured distance and secure this position. Ensure that the rigging points are symmetrically lined up, so that the cooler will hang in balance.

Warning: Always use four (4) rigging points, equally spread, to suspend the cooler.

1. Cooler rigging frame

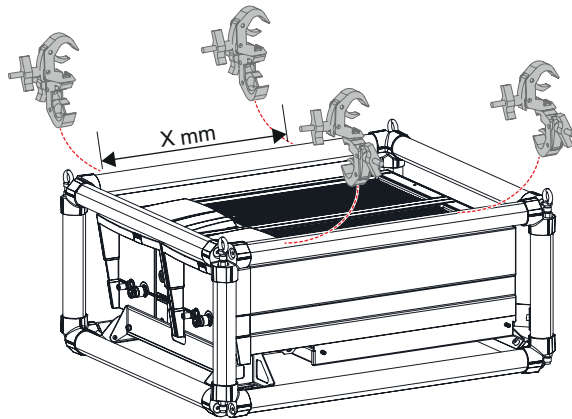


Image 1-12
Example of clamps installation

3. Place the cooler frame under the truss installation and lower the truss until the support bars of the truss are nearby the rigging clamps mounted on the rigging frame.

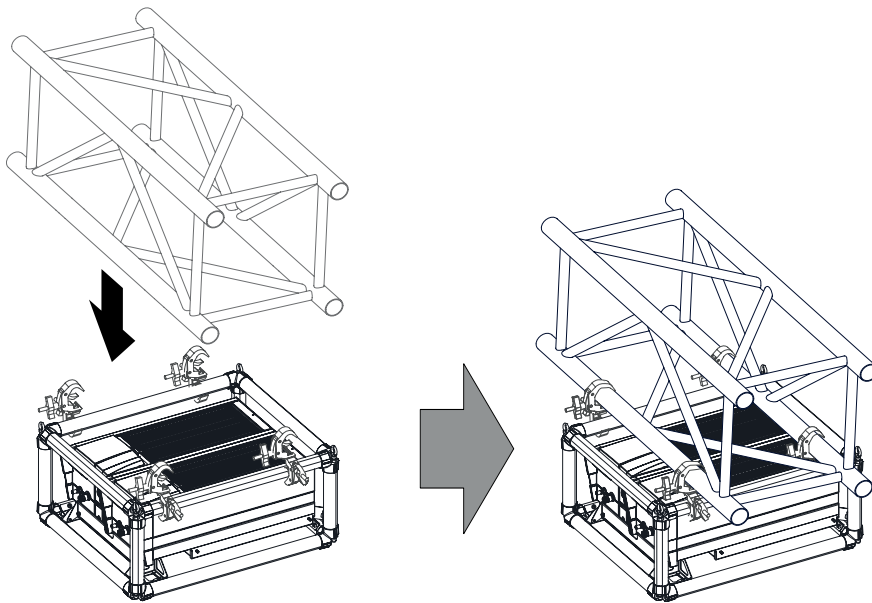


Image 1-13
Example of mounting to truss

Warning: Always secure the rigging points after adjustment.

4. Lock all four rigging clamps by turning the fixation handle clockwise.

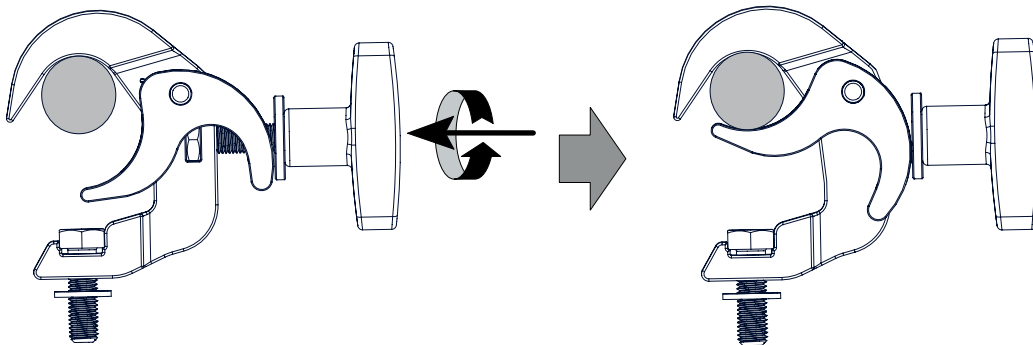


Image 1-14
Example of clamp fixation

5. Install 2 safety cables, one on both sides of the rigging frame and around the truss. Mount the 2 safety cables around the frame bar (push the hook through the loop and then around the truss so that there is not too much play (maximum 20 cm). If necessary turn the cable a few times around the truss before clasping the safety hook around the cable.

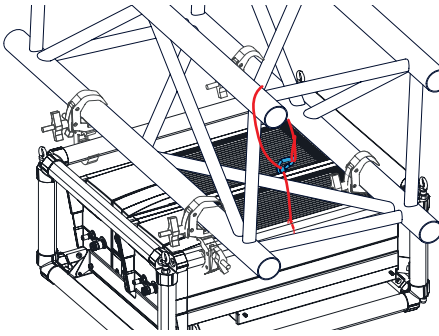


Image 1-15
Example of installation of a safety cable

Note: Mount the 2 safety cables in such a way that when something goes wrong, the coolers cannot fall more than 20 cm. If necessary, turn the cables a few times around the truss to obtain this maximum distance.

6. Lift up the truss with the attached coolers to the desired height.