

# XV2-23T Wi-Fi 6 Outdoor Access Point

802.11ax Dual-radio, 2x2

## QUICK LOOK:

Value tier outdoor Wi-Fi 6 access point designed for cost effective upgrade to the latest 802.11ax standard in Wi-Fi technology.

- Dual Radio Wi-Fi 6
- 5 GHz (2x2), 2.4 GHz (2x2)
- One 1 GbE uplink
- Outdoor rated IP67 enclosure
- Managed by cnMaestro™ or Swift

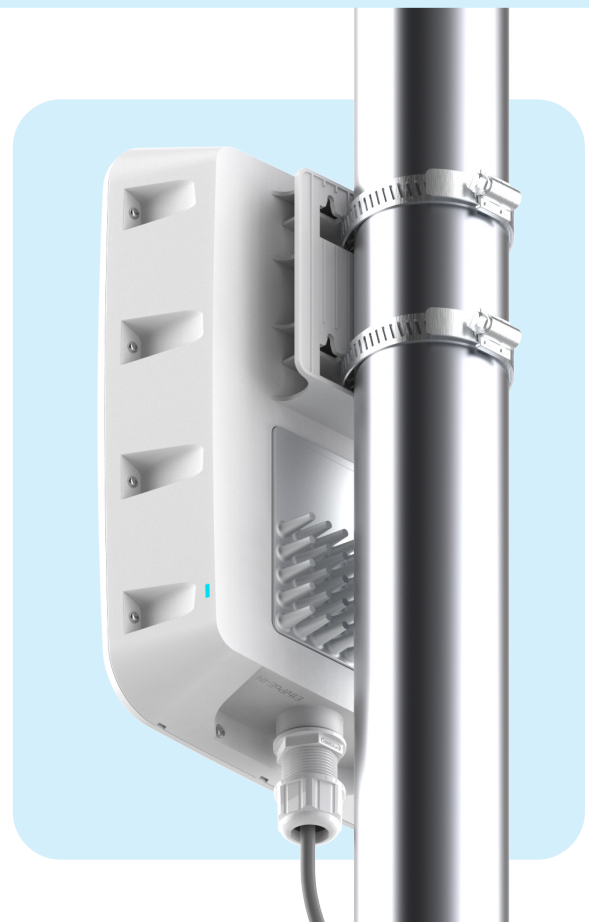


### Value tier Wi-Fi for any market

The Cambium Networks XV2-23T Wi-Fi 6 Outdoor access point delivers a high performance to price ratio attractive to any market. The XV2-23T can be onboarded and managed by your choice Cambium management systems - cnMaestro X or cnMaestro Essentials (either cloud-based or on-premises), or the Swift mobile app. Choose the management type you need and change it at any time. Unlike other value-tier access points, the XV2-23T is never locked into just one management selection.

### Designed for fast installation

The XV2-23T offers multiple installation methods included in the same shipping box. Mount the AP to a pole using the included clamps, or to a flat surface using the integrated bracket. The XV2-23T is a compact size and high performance outdoor Wi-Fi 6 access point.



## XV2-23T Wi-Fi 6 Outdoor Access Point

### Access Point Specifications

*Note: Some features will be included on subsequent firmware releases.*

**FCC** Ch 1–11, 36–64, 100–144, 149–165  
**ISED** Ch 1–11, 36–64, 100–116, 149–165  
**ETSI** Ch 1–13, 36–64, 100–140  
**ROW** *Individual country limits apply. Please contact sales for country specific regulations.*  
**Note:** FCC, IC, EU DFS channels not supported in first release

**Radios**  
**5 GHz** 802.11a/n/ac/ax, 2x2  
**2.4 GHz** 802.11 b/g/n/ax, 2x2

**Wi-Fi** 802.11 a/b/g/n/ac Wave 2/ax

**SSID Security** WPA3, WPA2 (CCMP, AES, 802.11i), WPA2 Enterprise (802.1x/EAP), WPA PSK (TKIP), WEP, Open

**Max PHY Rate**  
**5 GHz radio** 2,402 Mbps  
**2.4 GHz radio** 573.5 Mbps

**Ports** 1 x IEEE 100/1000 Mbps Ethernet

**Antenna**  
**5 GHz** 10 dBi, Omni  
**2.4 GHz** 7 dBi, Omni

**Max EIRP**  
**5 GHz** 36 dBm  
**2.4 GHz** 34 dBm  
*EIRP may be limited by country regulations*

**LTE Filter Band** 38, 40

**Power** Typical 11W, 802.3af powered device

**Dimensions** 300 mm x 200 mm x 84 mm  
 (11.8 in x 7.9 in x 3.3 in)

**Weight** 1,220 g (2.69 lbs)

**Security** Kensington lock slot

**LEDs** Multi-color status LEDs

**Ambient Operation Temperature** -40°C to 65°C  
 (-40°F to 149°F)

**Storage Temperature** -40°C to 70°C  
 (-40°F to 158°F)

**Humidity** 95% RH non-condensing

**MTBF** 5,077,102 hours @ 25°C  
 1,224,983 hours @ 65°C

**Mount Options** Pole or wall mounting.  
**Pole diameter:** MIN 30 mm / MAX 75 mm

**Certifications (Compliance)** WiFi Alliance 802.11a/b/g/n/ac/ax, PP2.0  
 FCC, CE, IC, IEC60950, IEC62368, EN50121, EN61373

## XV2-23T Wi-Fi 6 Outdoor Access Point

### Network Specifications

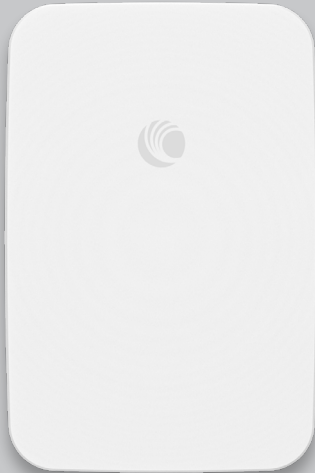
*Note: Some features will be included on subsequent firmware releases.*

<b>Operational Modes</b>	Standalone Cloud managed cnMaestro or VM	<b>RF Management</b>	Multi-Modal RF optimization supporting AutoRF (cnMaestro) performed in the intelligent edge AP. Out of band RF spectrum analysis, RF monitor with chn/noise/interference
<b>WLAN</b>	256 clients, 16 SSIDs WPA-TKIP, WPA2 AES, 802.1x 802.11w PMF	<b>Network</b>	LACP (802.3ad), TCP connection log, NAT logging firewall, DHCP server, L2, L3 or DNS based access control, VLAN Pooling, RADIUS attribute VID, VLAN per SSID per user
<b>Authentication Encryption</b>	Hotspot 2.0, 802.1x EAP-SIM/AKA, EAP-PEAP, EAP-TTLS, EAP-TLS, MAC authentication local database or RADIUS	<b>Band Steer Load Balance</b>	Yes
<b>Accounting</b>	RADIUS accounting, multiple AAA	<b>Tunnel</b>	L2TP, L2oGRE, PPPoE
<b>Scheduled WLAN</b>	On/off by day, week, time of day	<b>Network and RF Management Tools</b>	Wired and wireless remote packet capture, logging, ZapD
<b>Guest Access</b>	EasyPass guest self-registration, guest Ambassador, ePSK, Vouchers, Rate Limit, Splash page hosted on AP or cnMaestro Client isolation per SSID, per network	<b>Services</b>	L2-L7 application visibility & control, WiFi Calling control, WIDs/WIPs, NTP, Syslog, SNMP traps, DNS proxy, auto-off on WAN failure
<b>Data Limit</b>	Client limit per SSID	<b>API</b>	RESTful management and statistics API Presence location APIs
<b>Subscriber QoS</b>	WMM	<b>IP</b>	IPv4, IPv6
<b>Fast Roaming</b>	802.11r, OKC, Enhanced roaming		
<b>Mesh</b>	Multi-hop, either band		
<b>Channel Selection</b>	Multi-modal channel selection with AutoChannel, Autotune (cnMaestro)		

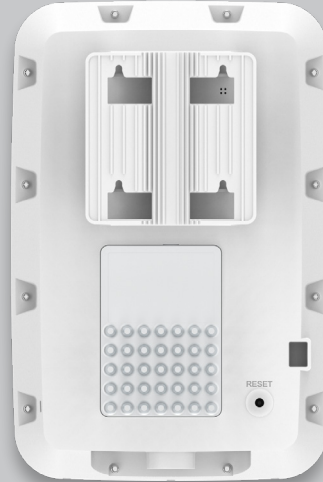
### Standards

<b>Wi-Fi Protocols</b>	VHT MCS rates, 16/64/256/1024/4096-QAM, 20/40/80/160 MHz
	Transmit Beam steering, Airtime Fairness, AMSDU, AMPDU, RIFS, STBC, LDPC, MIMO Power Save, MRC, BPSK, QPSK, CCK, DSSS, OFDM
	IEEE 802.11d/e/h/i/k/r/u/v/w

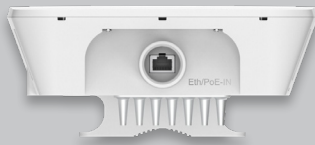
### XV2-23T Wi-Fi 6 Outdoor Access Point



Front View



Back Panel



Bottom View



Side View

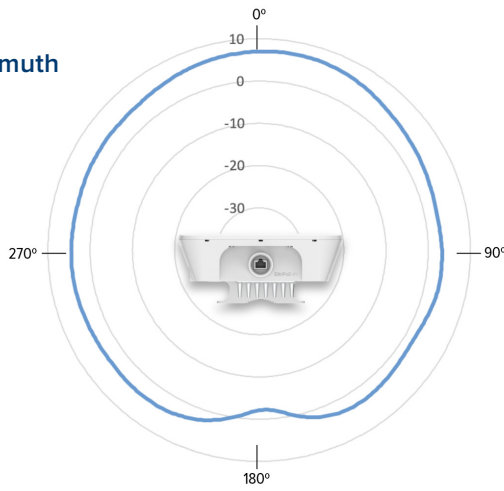


Front View

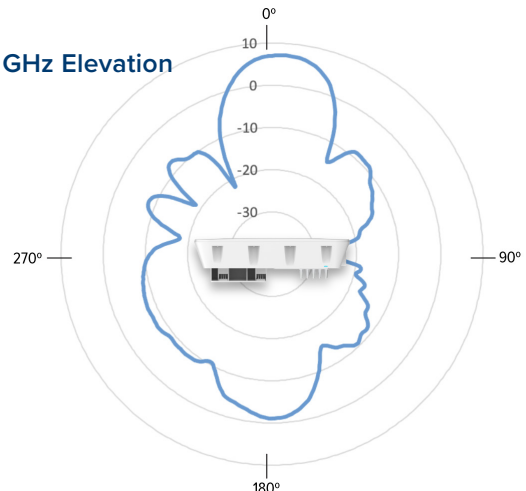
## XV2-23T Wi-Fi 6 Outdoor Access Point

### Antenna Patterns

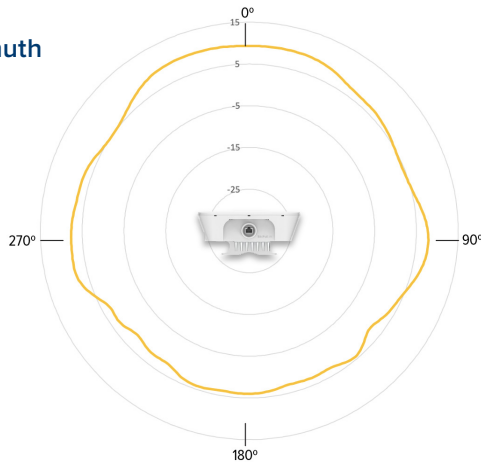
2.4 GHz Azimuth



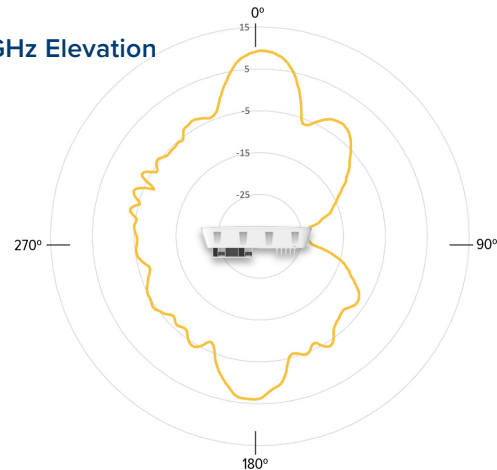
2.4 GHz Elevation



5 GHz Azimuth



5 GHz Elevation



#### 2.4 GHz Receive Sensitivity (dBm) Per Chain

802.11b		802.11g	
1 Mb	-99	1 Mb	-94.5
11 Mb	-91	11 Mb	-75.75
HT20		HT40	
MCS0	-95	MCS0	-92.5
MCS7	-76.5	MCS7	-73.5
HE20		HE40	
MCS0	-94.75	MCS0	-92
MCS11	-64.25	MCS11	-61.25

#### 2.4 GHz TX Power Target

Rate	Pout (dBm)
802.11b 1Mb	27
802.11g 6Mb	27
MCS0 HT20, HT40	27, 27
MCS7 HT20, HT40	25, 25
MCS0 VHT20, VHT40	27, 27
MCS11 VHT20, VHT40	23, 23
MCS0 HE20, HE40	27, 27
MCS11 HE20, HE40	23, 23

#### 5 GHz Receive Sensitivity (dBm) Per Chain

VHT20		VHT40		VHT80		VHT160	
MCS0	-95.5	MCS0	-94	MCS0	-90	MCS0	-87.5
MCS7	-77	MCS7	-74	MCS7	-71.5	MCS7	-69
HE20		HE40		HE80		HE160	
MCS0	-95.5	MCS0	-93.5	MCS0	-90.5	MCS8	-65
MCS7	-76.5	MCS7	-74	MCS7	-71.5	MCS11	-57

#### 5 GHz TX Power Target

Rate	Pout (dBm)
802.11a	27
MCS0 HT20, HT40	27, 27
MCS7 HT20, HT40	24, 24
MCS0 VHT40, VHT80, VHT160	27, 27, 27, 27
MCS11 VHT40, VHT80, VHT160	22, 22, 22, 21
MCS0 HE20, HE40, HE80, HE160	27, 27, 27, 27
MCS11, HE20, HE40, HE80, HE160	22, 22, 22, 21

## XV2-23T Wi-Fi 6 Outdoor Access Point

### Cambium Ordering Information

**XV2-23T** Regulatory Model

**XV2-23T0A00-US** XV2-23T Outdoor Dual radio WiFi 6 AP, 2x2, 2.5 GbE, IP67, US

**XV2-23T0A00-EU** XV2-23T Outdoor Dual radio WiFi 6 AP, 2x2, 2.5 GbE, IP67, EU

**XV2-23T0A00-RW** XV2-23T Outdoor Dual radio WiFi 6 AP, 2x2, 2.5 GbE, IP67, RW

**XV2-23T0A00-CA** XV2-23T Outdoor Dual radio WiFi 6 AP, 2x2, 2.5 GbE, IP67, CA

**N000000L142A** N000000L142A PoE injector, 60W, 5 GbE, Outdoor, Energy Level 6 Supply

**N000000L034B** PoE, 30.5W, 56V, GbE DC Injector, Outdoor, Energy Level 6 Supply, accepts C5 connector

**N000900L017A** PoE, 15.4W, 56V, GbE DC Injector, Outdoor, Energy Level 6 Supply, accepts C5 connector

**AX-E510RBKT-WW** Shock mount bracket

### cnMaestro X Ordering Information

**MSX-SUB-XV2-23T-1** cnMaestro X for one XV2-23T AP. Creates one Device Tier 3 slot. Includes Cambium Care Pro support. 1-year subscription

**MSX-SUB-XV2-23T-3** cnMaestro X for one XV2-23T AP. Creates one Device Tier 3 slot. Includes Cambium Care Pro support. 3-year subscription

**MSX-SUB-XV2-23T-5** cnMaestro X for one XV2-23T AP. Creates one Device Tier 3 slot. Includes Cambium Care Pro support. 5-year subscription

## XV2-23T Wi-Fi 6 Outdoor Access Point

### Cambium Care Ordering Information

<b>CCADV-SUP-XV2-23T-1</b>	Cambium Care Advanced, 1-year support for one XV2-23T Wi-Fi 6/6E AP. 24x7 TAC support, SW updates, and NBD advance replacement for HW
<b>CCADV-SUP-XV2-23T-3</b>	Cambium Care Advanced, 1-year support for one XV2-23T Wi-Fi 6/6E AP. 24x7 TAC support, SW updates, and NBD advance replacement for HW
<b>CCADV-SUP-XV2-23T-5</b>	Cambium Care Advanced, 3-year support for one XV2-23T Wi-Fi 6/6E AP. 24x7 TAC support, SW updates, and NBD advance replacement for HW
<b>CCPRO-SUP-XV2-23T-1</b>	Cambium Care Pro, 1-year support for one XV2-23T Wi-Fi 6/6E AP. 24x7 TAC support and SW updates
<b>CCPRO-SUP-XV2-23T-3</b>	Cambium Care Pro, 3-year support for one XV2-23T Wi-Fi 6/6E AP. 24x7 TAC support and SW updates
<b>CCPRO-SUP-XV2-23T-5</b>	Cambium Care Pro, 5-year support for one XV2-23T Wi-Fi 6/6E AP. 24x7 TAC support and SW updates
<b>CCADV-UPG-XV2-23T-1</b>	Cambium Care Advanced Add-on to cnMaestro X, 1-year support for one XV2-23T. 24x7 TAC support, SW updates, and NBDS advance replacement for HW
<b>CCADV-UPG-XV2-23T-3</b>	Cambium Care Advanced Add-on to cnMaestro X, 3-year support for one XV2-23T. 24x7 TAC support, SW updates, and NBDS advance replacement for HW
<b>CCADV-UPG-XV2-23T-5</b>	Cambium Care Advanced Add-on to cnMaestro X, 5-year support for one XV2-23T. 24x7 TAC support, SW updates, and NBDS advance replacement for HW

### LIMITED WARRANTY

Cambium Networks XV2-23T Wi-Fi 6 Access Point includes a limited hardware warranty for a period of 3 years.

#### ABOUT CAMBIUM NETWORKS

Cambium Networks empowers millions of people with wireless connectivity worldwide. Its wireless portfolio is used by commercial and government network operators as well as broadband service providers to connect people, places and things. With a single network architecture spanning fixed wireless and Wi-Fi, Cambium Networks enables operators to achieve maximum performance with minimal spectrum. End-to-end cloud management transforms networks into dynamic environments that evolve to meet changing needs with minimal physical human intervention. Cambium Networks empowers a growing ecosystem of partners who design and deliver gigabit wireless solutions that just work.

[cambiumnetworks.com](http://cambiumnetworks.com)

10252022